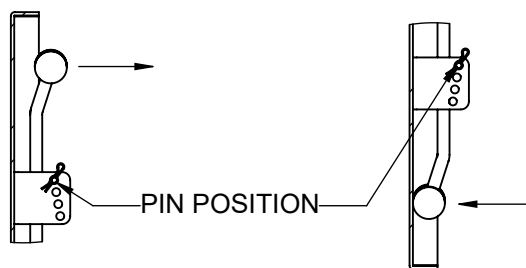
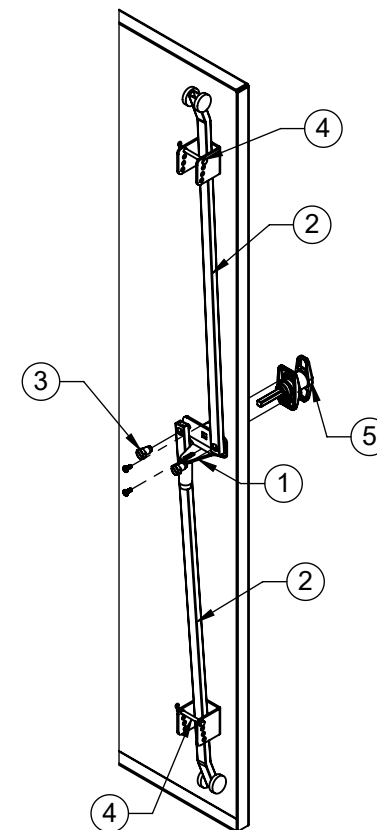


SECTION A-A



PIN POSITION

**DETAIL B**

TOP ROLLER POSITION

**DETAIL C**

BOTTOM ROLLER POSITION

**NOTES:**

1. **INSTALL HANDLE WITH PROVIDED SCREWS**
2. **ATTACH LOCK BARS TO LOCK BRACKET  
(NOTE POSITION OF ROLLER)**
3. **INSTALL CLEVIS PINS IN LOCATIONS SHOWN**
4. **ADJUST CLEVIS PINS AS NEEDED**

ITEM NO.	QTY.	PART NO.	DESCRIPTION
1	1	5950-TUBEROD-CZP	CENTER LOCK BRACKET
2	2		LOCKING BAR
3	2		SHOULDER BOLT, 5/16 -18
4	2		CLEVIS PIN
5	1	5950-TH	LOCKING T-HANDLE FOR TELCO BOXES

THE INFORMATION CONTAINED IN THIS DRAWING IS THE SOLE PROPERTY OF ALT. ANY REPRODUCTION IN PART OR WHOLE WITHOUT THE WRITTEN PERMISSION OF ALT IS PROHIBITED.

5/31/2018

FINISH: NONE WEIGHT:

CAD GENERATED DRAWING, DO NOT MANUALLY UPDATE

APPROVALS	DATE
DRAWN SF	05/31/18
CHECKED	
ENGINEER	
ISSUED	



800-950-7960  
FAX 940-455-2817  
www.altfabrication.com  
sales@altfabrication.com

122 Leesley Lane  
Argyle, Texas  
76226

TITLE:  
**LOCK INSTALLATION FOR 48" TELCO BOXES**

DWG. NO.  
**5950-TUBEROD-CZP-INST**

SCALE: NTS DO NOT SCALE DRAWING SHEET: 1 OF 1

REV.  
**A**