
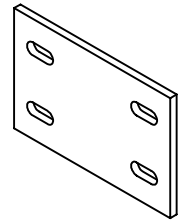


ITEM NO.	QTY.	PART NO.	DESCRIPTION
1	1	1	BUS BAR SPLICE PLATE
2	4	4423	BOLT, 3/8" X 1" LG HEX, SST
3	4	4720	WASHER, 3/8" NARROW, SST
4	4	4724	WASHER, 3/8" RGLR LOCK, SST
5	4	4620	NUT, 3/8" HEX, SST

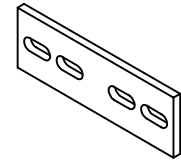
1 SEE TABLE BELOW FOR ASSEMBLY NO AND ITEM 1 PART NUMBER

ASSEMBLY NO.	PART NO ITEM 1	DESCRIPTION
3849	7000-3849	1/4" X 1" X 4" FLAT 90 DEGREE BAR SPLICE PLATE
3849-18	7000-3849-18	1/8" X 1" X 4" FLAT 90 DEGREE BAR SPLICE PLATE
3850	7000-3850	1/4" X 1" X 6" COPPER STRAIGHT BAR SPLICE PLATE
3850-18	7000-3850-18	1/8" X 1" X 6" COPPER STRAIGHT BAR SPLICE PLATE
3851	7000-3851	1/4" X 1" X 6" COPPER RIGHT ANGLE BAR SPLICE PLATE
3851-18	7000-3851-18	1/8" X 1" X 6" COPPER RIGHT ANGLE BAR SPLICE PLATE
3852	7000-3852	1/4" X 2" X 6" COPPER STRAIGHT BAR SPLICE PLATE
3852-18	7000-3852-18	1/8" X 2" X 6" COPPER STRAIGHT BAR SPLICE PLATE
3853	7000-3853	1/4" X 2" X 6" COPPER RIGHT ANGLE BAR SPLICE PLATE
3853-18	7000-3853-18	1/8" X 2" X 6" COPPER RIGHT ANGLE BAR SPLICE PLATE
3854	7000-3854	1/4" X 2" X 6" FLAT 90 DEGREE BAR SPLICE PLATE
3854-18	7000-3854-18	1/8" X 2" X 6" FLAT 90 DEGREE BAR SPLICE PLATE
3855	7000-3855	1/4" X 4" X 6" FLAT 90 DEGREE BAR SPLICE PLATE
3855-18	7000-3855-18	1/8" X 4" X 6" FLAT 90 DEGREE BAR SPLICE PLATE
3856	7000-3856	1/4" X 4" X 6" COPPER STRAIGHT BAR SPLICE PLATE
3856-18	7000-3856-18	1/8" X 4" X 6" COPPER STRAIGHT BAR SPLICE PLATE
3857	7000-3857	1/4" X 4" X 6" COPPER RIGHT ANGLE BAR SPLICE PLATE
3857-18	7000-3857-18	1/8" X 4" X 6" COPPER RIGHT ANGLE BAR SPLICE PLATE

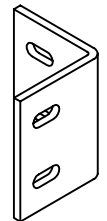
<p>THE INFORMATION CONTAINED IN THIS DRAWING IS THE SOLE PROPERTY OF ALT. ANY REPRODUCTION IN PART OR WHOLE WITHOUT THE WRITTEN PERMISSION OF ALT IS PROHIBITED.</p> <p>8/8/2002</p>	<p>CAD GENERATED DRAWING, DO NOT MANUALLY UPDATE</p>		 <p>800-950-7933 FAX 940-455-2817 www.advancedlightning.com sales@advancedlightning.com</p>	<p>122 Leesley Lane Argyle, Texas 76226</p>
	<p>APPROVALS</p>			
	<p>DRAWN</p>	<p>MAD 05/10/02</p>		
	<p>CHECKED</p>	<p>JMD 06/03/02</p>		
	<p>ENGINEER</p>	<p>JMD 06/03/02</p>		
<p>ISSUED</p>	<p>DMR 08/05/02</p>	<p>SCALE: NTS DO NOT SCALE DRAWING SHEET 1 OF 2</p>	<p>REV. A</p>	



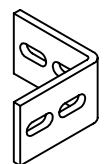
7000-3856
7000-3856-18



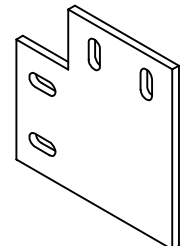
7000-3850
7000-3852
7000-3850-18
7000-3852-18



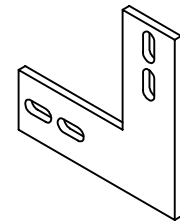
7000-3857
7000-3857-18



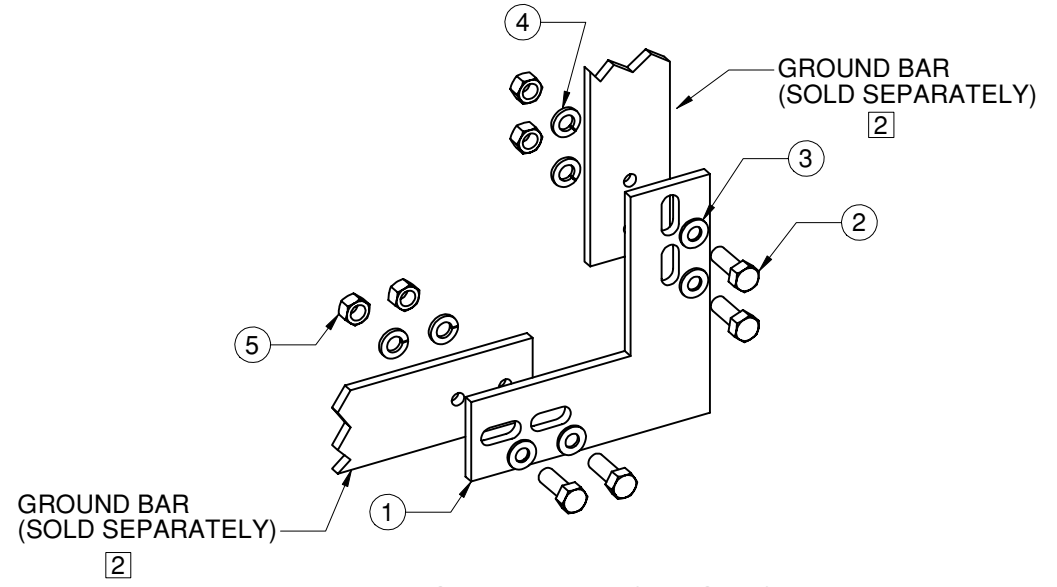
7000-3851
7000-3853
7000-3851-18
7000-3853-18



7000-3855
7000-3855-18



7000-3849
7000-3854
7000-3849-18
7000-3854-18



3854 INSTALLATION SHOWN
OTHERS SIMILAR

2 FIELD DRILL GROUND BAR AS REQUIRED

THE INFORMATION CONTAINED IN THIS DRAWING IS THE SOLE PROPERTY OF ALT. ANY REPRODUCTION IN PART OR WHOLE WITHOUT THE WRITTEN PERMISSION OF ALT IS PROHIBITED. 8/8/2002	CAD GENERATED DRAWING, DO NOT MANUALLY UPDATE		800-950-7933 FAX 940-455-2817 www.advancedlightning.com sales@advancedlightning.com	122 Leesley Lane Argyle, Texas 76226
	APPROVALS DATE			
	DRAWN MAD	05/10/02	COPPER GROUND BAR SPLICE KITS	
	CHECKED JMD	06/03/02		
	ENGINEER JMD	06/03/02	DWG. NO.	REV.
ISSUED DMR	08/05/02	38XX		
SCALE: NTS		DO NOT SCALE DRAWING	SHEET 2 OF 2	A