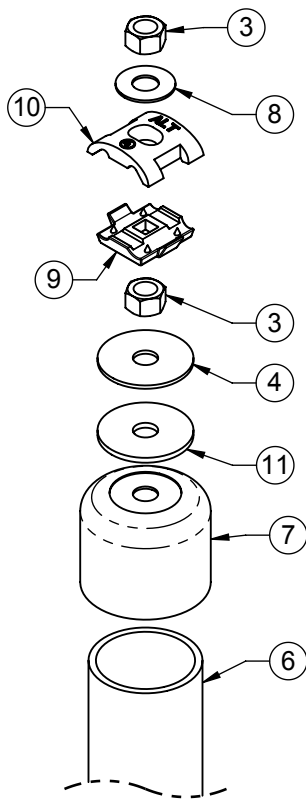
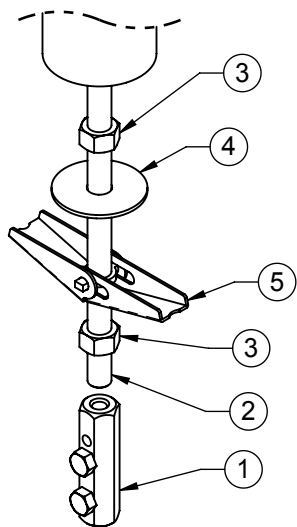


REVISIONS			
REV.	DESCRIPTION	DATE	APPROVED
D	UPDATED B.O.M.	01-20-11	TU

PART NO.  
231X




ITEM	PART NO.					QTY	DESCRIPTION
	2310	A2310	2311	2311BM-24-3	2311BM-36-3		
1	849-12	A849-12	849-12	849-12	849-12	1	VERTICAL BASE, FEMALE
2	4320-18	4315-18	4315-18	4315-24	4315-36	1	1/2" - 13 THREADED STUD
3	4650-BULK	4650-BULK	4650-BULK	4650-BULK	4650-BULK	4	1/2" STAINLESS HEXNUT
4	4751-BULK	4751-BULK	4751-BULK	4751-BULK	4751-BULK	2	WASHER, FENDER, 1/2" SST
5	4600-12	4600-12	4600-12	4600-12	4600-12	1	1/2" TOGGLE WING NUT
6	5220-2-12	5220-2-12	5220-2-12	5220-2-18	5220-2-28	1	PVC PIPE, (2" SCH 40)
7	7000-5210-212	7000-5210-212	7000-5210-212	7000-5210-3	7000-5210-3	1	CAP, PVC PIPE
8	4750-BULK	4750-BULK	4750-BULK	4750-BULK	4750-BULK	1	1/2" X 1-1/4" OD STAINLESS WASHER
9	7000-900-4	7000-A900-4	7000-A900-4	N/A	N/A	1	PARALLEL CONNECTOR, BOTTOM
10	7000-900-2	7000-A900-2	7000-A900-2	N/A	N/A	1	PARALLEL CONNECTOR, TOP
11	4758-BULK	4758-BULK	4758-BULK	4758-BULK	4758-BULK	1	WASHER, 1/2" NEOPRENE
12	N/A	N/A	N/A	929-5LH-12	929-5LH-12	1	PARALLEL CONNECTOR WITH SHIM
WEIGHT	2.69	2.39	2.48	3.75	5		



ISO VIEW

[1] FOR PARTS 2311BM-24-3 AND 2311BM-36-3, ITEMS 9 AND 10 (PARALLEL CONNECTOR TOP AND BOTTOM) ARE REPLACED WITH ITEM 12 (PARALLEL CONNECTOR WITH SHIM).

ITEM 12 (PARALLEL CONNECTOR WITH SHIM) IS NOT SHOWN.

THE INFORMATION CONTAINED IN THIS DRAWING IS THE SOLE PROPERTY OF ALT. ANY REPRODUCTION IN PART OR WHOLE WITHOUT THE WRITTEN PERMISSION OF ALT IS PROHIBITED.  2/25/2011		CAD GENERATED DRAWING, DO NOT MANUALLY UPDATE		 800-950-7960 FAX 940-455-2817 www.altfabrication.com sales@altfabrication.com	122 Leesley Lane Argyle, Texas 76226		
		APPROVALS	DATE		TITLE:		
		DRAWN	CDM		02/15/06	THRU ROOF ASSEMBLY 2" PVC	
		CHECKED	JKB		03/21/06	DWG. NO. 231X	
		ENGINEER	JMD		03/27/06	REV. D	
FINISH: NONE	WEIGHT: SEE TABLE	ISSUED	DMR	03/27/06	SCALE: NTS	DO NOT SCALE DRAWING	SHEET: 1 OF 1