
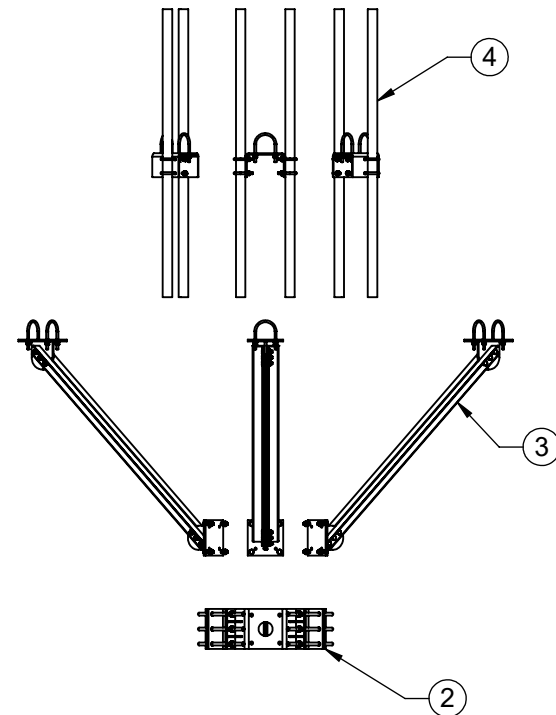
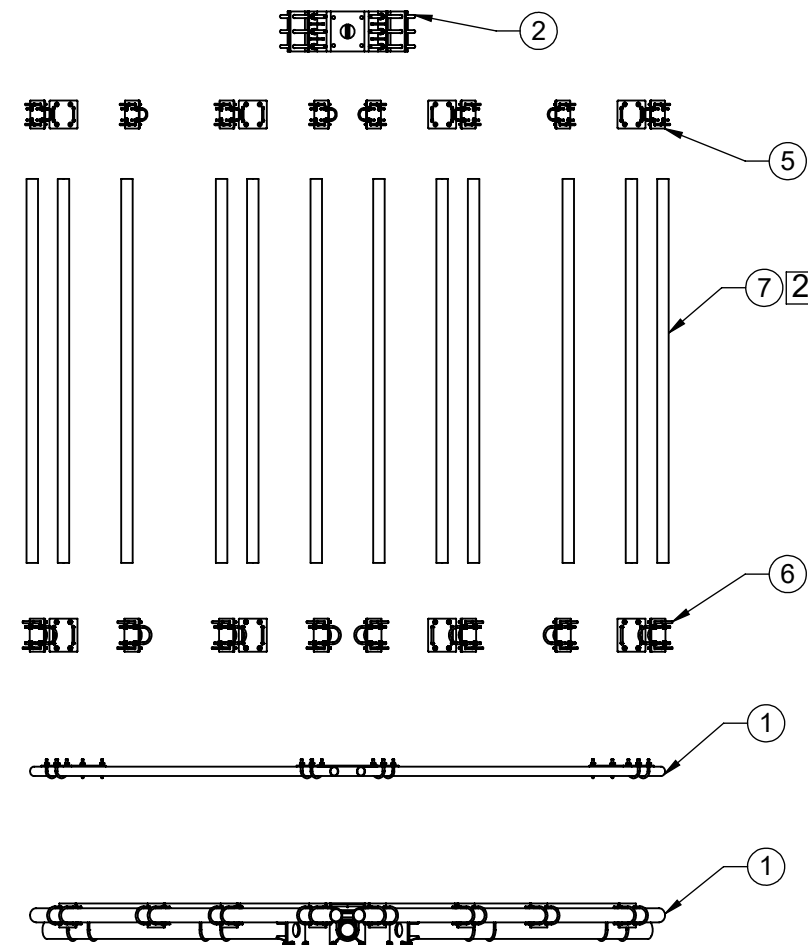
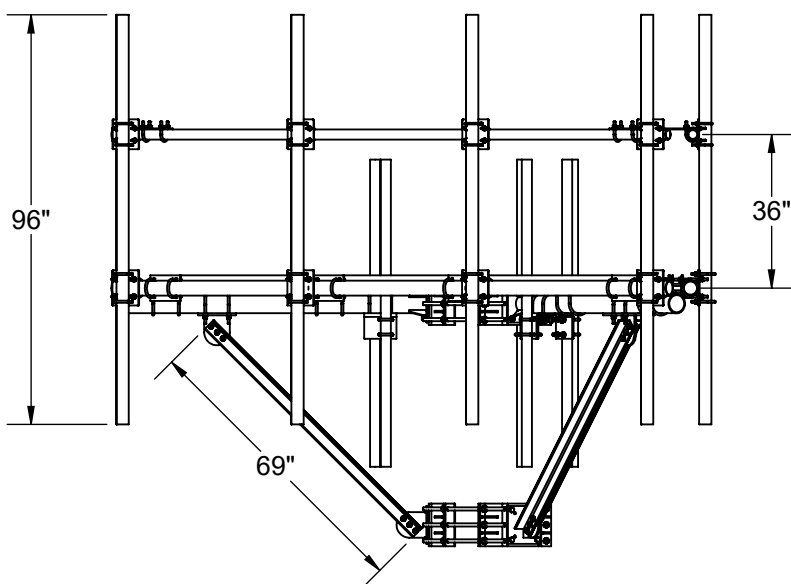
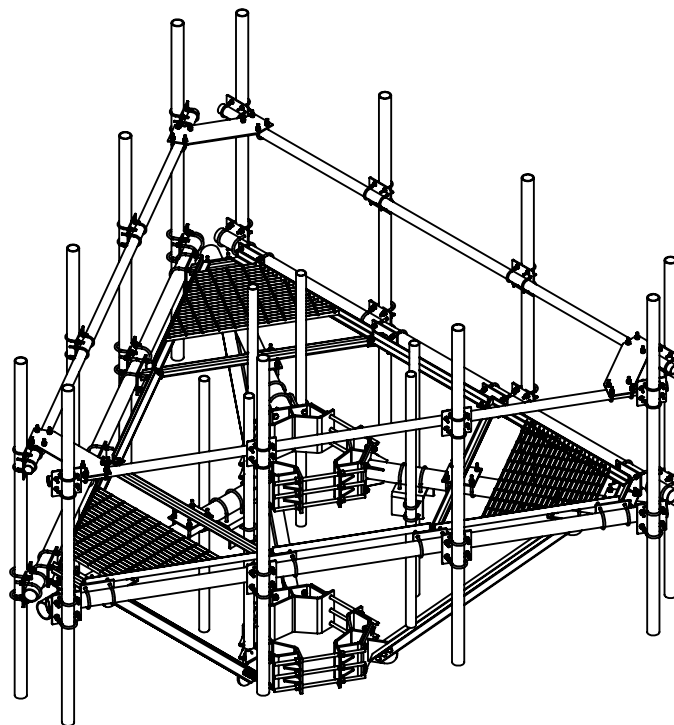
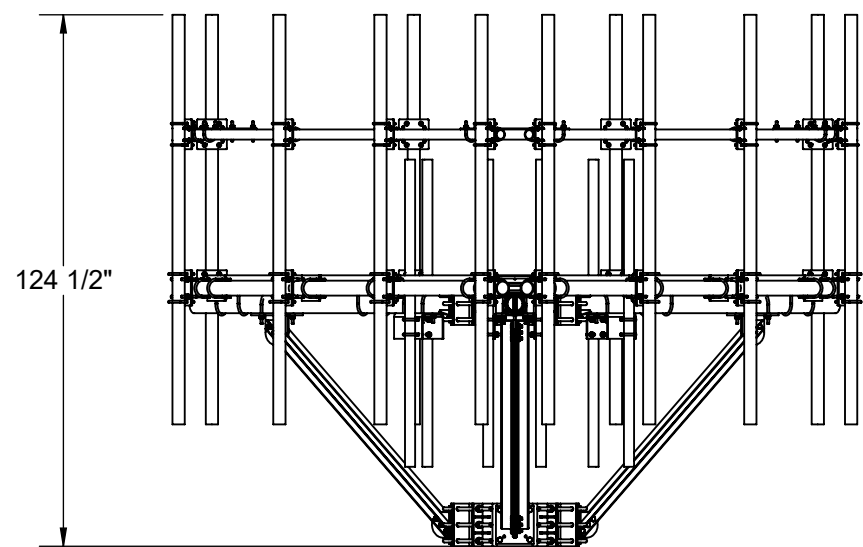
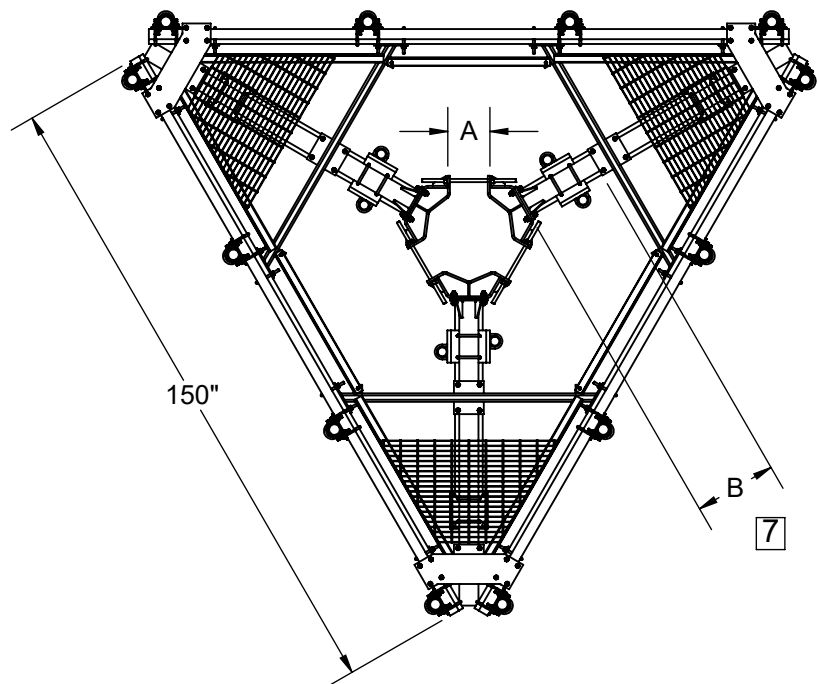



- ITEM 1, SADDLE BRACKET ASSEMBLY, TO BE ORDERED SEPARATELY DEPENDING ON THE DIAMETER OF THE MONOPOLE.
- ITEM 4 ANTENNA MOUNT PIPE ASSEMBLY, TO BE ORDERED SEPARATELY. ALL OUTSIDE ANTENNA MOUNT PIPE ASSEMBLIES ARE REQUIRED FOR HANDRAIL SUPPORT. AT LEAST THREE ARE REQUIRED PER PLATFORM FACE.
- FULLY INSTALL ITEM 1 (SADDLE BRACKET) OR THE TOP HAT ASSEMBLY, PRIOR TO MOUNTING THE PLATFORM TO ACHIEVE PROPER FIT.
- DIMENSION "A" MUST BE EQUAL FOR ALL 3 SADDLE BRACKETS, AFTER FULLY TIGHTENING ALL THREADS.
- FULL COMPLEMENT OF ANTENNA MOUNT PIPE ASSEMBLIES SHOWN.
- GENERAL INSTALLATION GUIDLINES: CONSTRUCT THE PLATFORM ASSEMBLY, STARTING AT THE MONOPOLE AND WORKING OUTWARD, WITH THE EXCEPTION OF THE SADDLE BRACKET OR TOP HAT ASSEMBLY. KEEP ALL FASTENERS ON THE PLATFORM ASSEMBLY LOOSE UNTILL FULLY ASSEMBLED.
- DIMENSION "B" MUST BE EQUAL AT ALL THREE ARM LOCATIONS BETWEEN THE SADDLE BRACKET(OR TOP HAT) ASSEMBLY AND ARM WELDMENT.
- MAX ULTIMATE WIND RATING: 180 MPH 3 SEC GUST, NO ICE@400FT.
- MAX DESIGN WIND RATING: 140MPH 3 SEC GUST, NO ICE @400 FT.  
60MPH 3 SEC GUST, WITH ICE @400 FT.
- EXPOSURE CATEGORY: B OR C

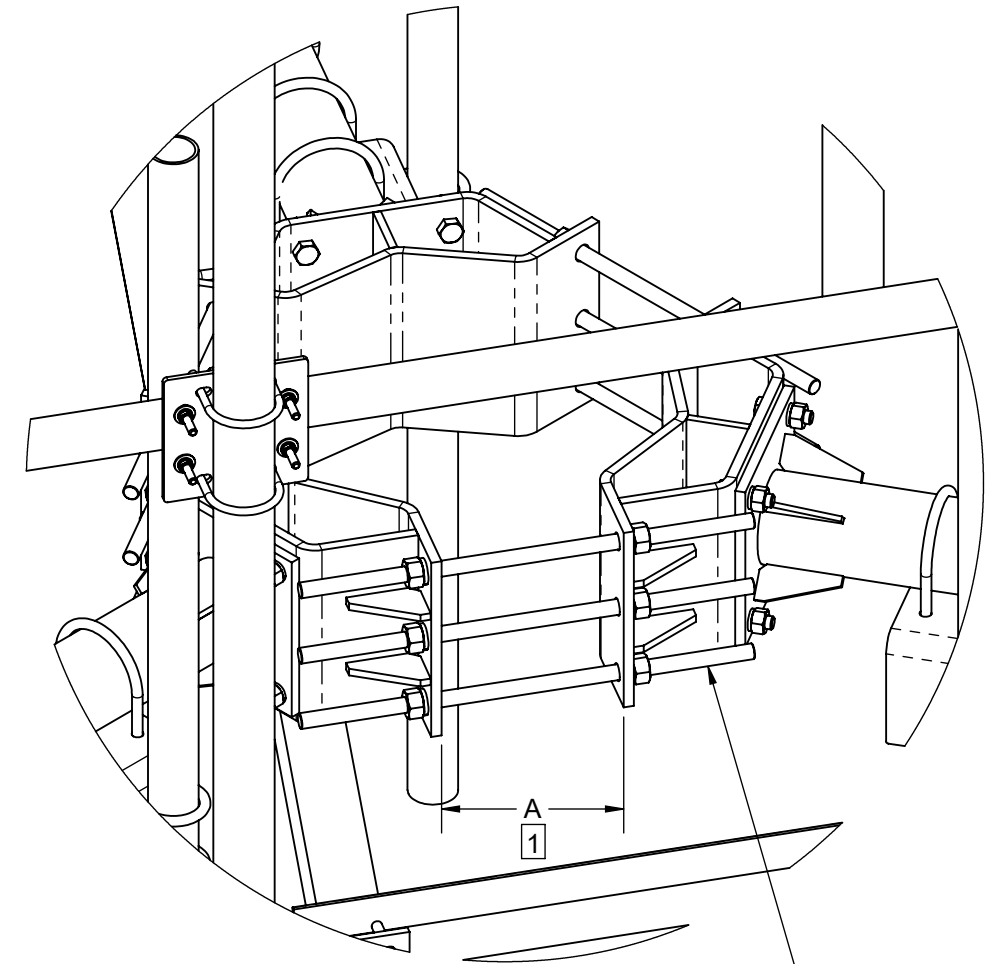
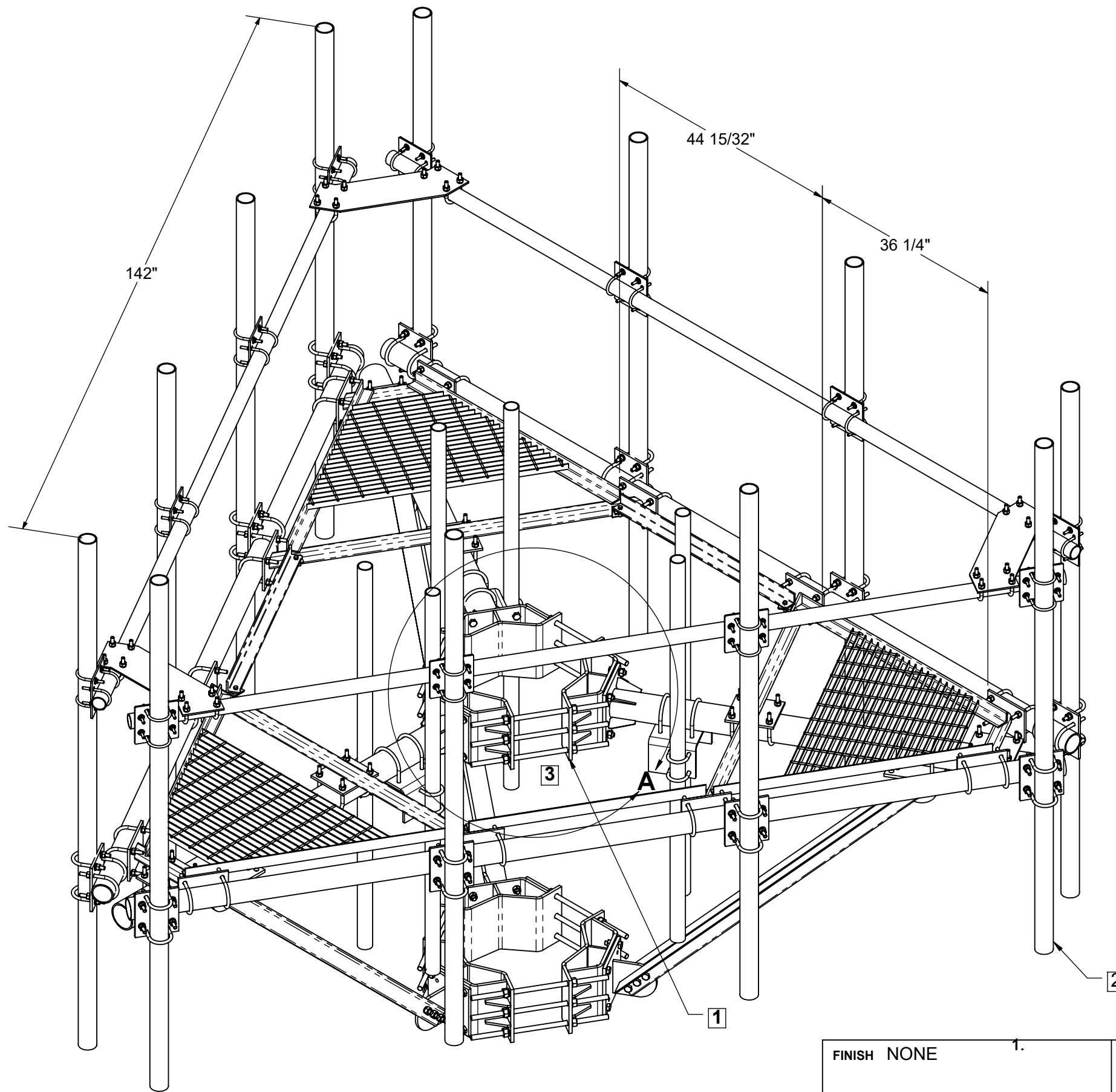
ITEM NO.	QTY.	PART NO.	DESCRIPTION
1	1	2123LD-12HR	12' UNIVERSAL PLATFORM
2	2	2121LD-1130	SADDLE BRACKET ASSEMBLY
3	1	2123HD-KSK	KICKER SUPPORT KIT
4	3	2123HD-RMK	RADIO MOUNT KIT
5	12	2120-278-238	2-7/8" OD TO 2-3/8" OD
6	12	2120-312-278HD	3-1/2" OD TO 2-7/8" OD
7	12	2126-96	2-7/8" OD X 96" GALV PIPE

FINISH NONE	1.	MATERIAL PROD# SEE B.O.M.		800-950-7960 FAX 940-455-2817 www.altfabrication.com sales@altfabrication.com	122 Leesley Lane Argyle, Texas 76226
DO NOT SCALE DRAWING	UNLESS OTHERWISE SPECIFIED DIMENSIONS ARE IN INCHES. TOLERANCES ARE: FRACTIONS DECIMALS ANGLES ± 1/32 .XX ± .XX ± 1° .XXX ± .XXX	APPROVALS	DATE	TITLE:	
		DRAWN AS	04/19/17	12' HD PLATFORM WITH SUPPORT KIT	
		CHECKED		SIZE B	DWG. NO. 2123HD-12HR-1130-96
		ENGR.		REV. A	
		ISSUED		SCALE: NTS	WEIGHT 2747
		MANUFACT.		SHEET 1 OF 3	
THE INFORMATION CONTAINED IN THIS DRAWING IS THE SOLE PROPERTY OF ALT. ANY REPRODUCTION IN PART OR WHOLE WITHOUT THE WRITTEN PERMISSION OF ALT IS PROHIBITED.					




ITEM NO.	QTY.	PART NO.	DESCRIPTION
1	1	2123LD-12HR	12' UNIVERSAL PLATFORM
2	2	2121LD-1130	SADDLE BRACKET ASSEMBLY
3	1	2123HD-KSK	KICKER SUPPORT KIT
4	3	2123HD-RMK	RADIO MOUNT KIT
5	12	2120-278-238	2-7/8" OD TO 2-3/8" OD
6	12	2120-312-278HD	3-1/2" OD TO 2-7/8" OD
7	12	2126-96	2-7/8" OD X 96" GALV PIPE

FINISH    NONE		MATERIAL PROD# SEE B.O.M.		<div></div> <div>800-950-7960 FAX 940-455-2817 www.altfabrication.com sales@altfabrication.com</div> <div>122 Leesley Lane Argyle, Texas 76226</div>	
DO NOT SCALE DRAWING		APPROVALS		DATE	
UNLESS OTHERWISE SPECIFIED DIMENSIONS ARE IN INCHES. TOLERANCES ARE:  FRACTIONS    DECIMALS    ANGLES ± 1/32    .XX    ± .XX    ± 1°  					



DETAIL A

ALL THREADS WITH FASTENERS  
INCLUDED IN SADDLE BRACKET KIT

FINISH    NONE		1.		MATERIAL PROD# SEE B.O.M.				800-950-7960 FAX 940-455-2817 www.altfabrication.com sales@altfabrication.com		122 Leesley Lane Argyle, Texas 76226	
DO NOT SCALE DRAWING				APPROVALS		DATE		TITLE:			
UNLESS OTHERWISE SPECIFIED DIMENSIONS ARE IN INCHES. TOLERANCES ARE:  FRACTIONS    DECIMALS    ANGLES ± 1/32    .XX ± .XX    ± 1° .XXX ± .XXX  5/24/2017				DRAWN							