


1. ALT FABRICATION MOUNT 2123-8HR-1130-1296 IS CLASSIFIED AS M2250R(4000)-4[6] BASED ON THE TIA-5053 MOUNTING SYSTEM CLASSIFICATION STANDARD.

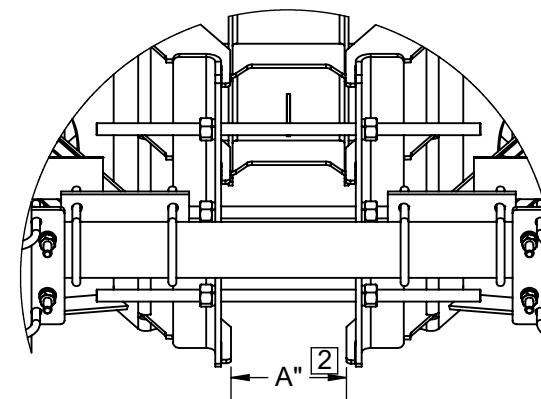
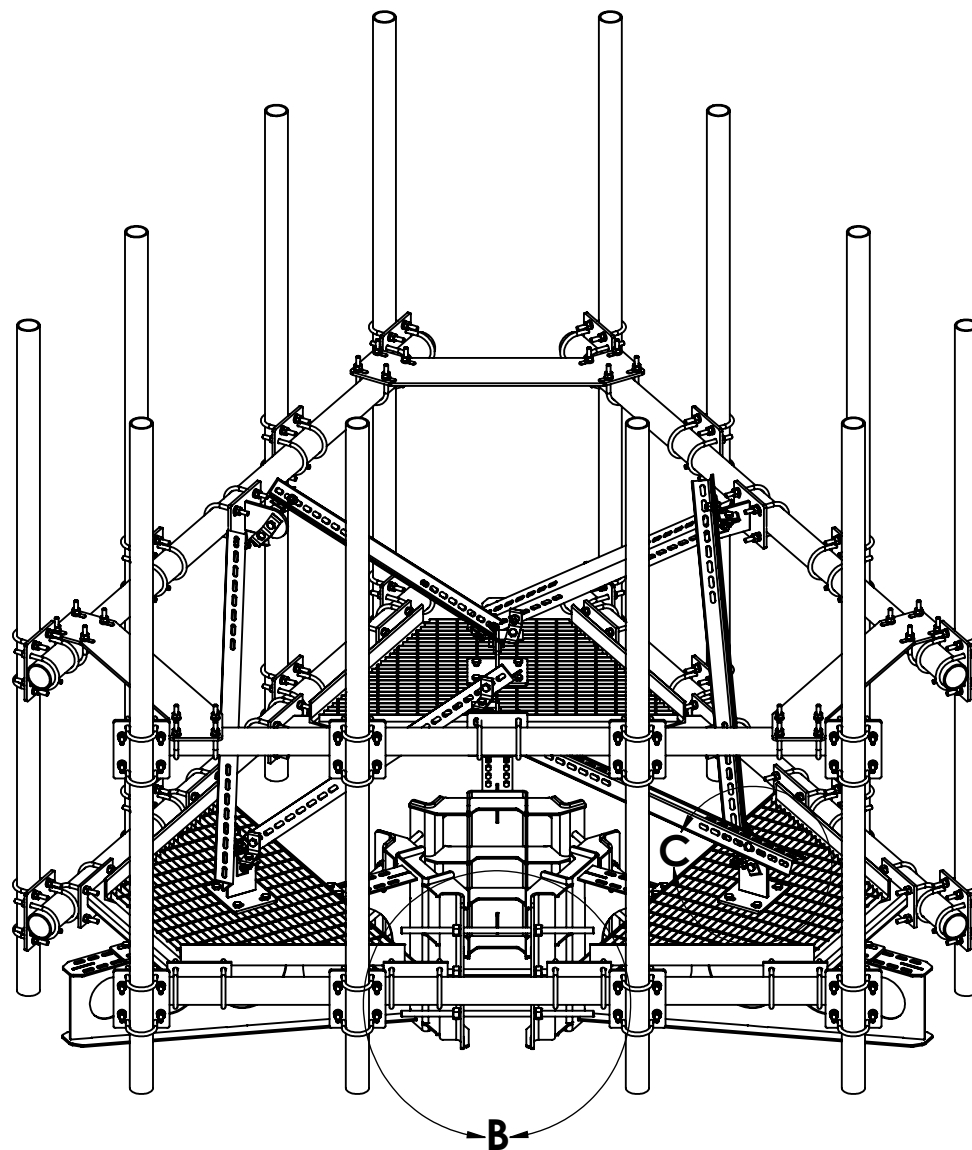
**NOTE:** MAXIMUM OF 12 PIPES EVENLY SPACED.

2. FULLY INSTALL (3) SUPPORT ARMS, PRIOR TO MOUNTING THE PLATFORM TO ACHIEVE PROPER FIT.
3. DIMENSION "A" MUST BE EQUAL FOR ALL 3 SUPPORT ARMS, AFTER FULLY TIGHTENING ALL-THREADS.
4. FULL COMPLEMENT OF ANTENNA MOUNT PIPES SHOWN.
5. GENERAL INSTALLATION GUIDELINES: CONSTRUCT THE PLATFORM ASSEMBLY, STARTING AT THE MONOPOLE AND WORKING OUTWARD. WITH THE EXCEPTION OF THE SADDLE BRACKET OR TOP HAT ASSEMBLY, KEEP ALL FASTENERS ON THE PLATFORM ASSEMBLY LOOSE UNTIL FULLY ASSEMBLED.
6. DIM "B" MUST BE EQUAL AT ALL THREE ARM LOCATIONS.

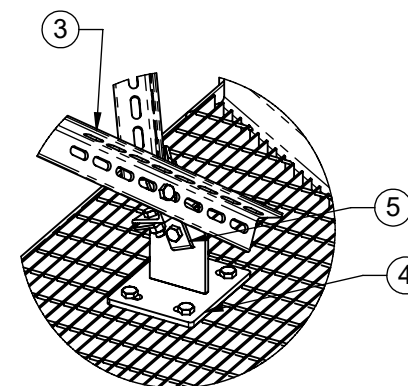
- MAXIMUM MOUNT HEIGHT: 400 ft.
- MAXIMUM ULTIMATE WIND SPEED, NO ICE: 180 mph (3-SECOND GUST)
- MAXIMUM DESIGN WIND SPEED, NO ICE: 140 mph (3-SECOND GUST)
- MAXIMUM DESIGN WIND SPEED, WITH ICE: 60 mph (3-SECOND GUST)
- STRUCTURE CLASS: I or II
- EXPOSURE CATEGORY: B or C
- TOPOGRAPHIC CATEGORY: I
- MAXIMUM DESIGN ICE THICKNESS: 1"
- GUST EFFECT FACTOR, Gh: 1.0
- WIND DIRECTION PROBABILITY FACTOR, Kd: 0.95

| ITEM NO. | QTY. | PART NO.           | DESCRIPTION                         |
|----------|------|--------------------|-------------------------------------|
| 1        | 1    | 2123-8             | 8' MONOPOLE PLATFORM                |
| 2        | 1    | 2123-8HRKIT        | HANDRAIL KIT FOR 8' PLATFORM        |
| 3        | 6    | 7000-2123-5        | HANDRAIL BRACE ANGLE                |
| 4        | 6    | 7000-2116-MSK-2    | MOUNTING PLATE WELDMENT             |
| 5        | 24   | 7000-2116-MSK-3    | 1/4" X 3" X 3" CLIP ANGLE           |
| 6        | 3    | 7000-2116-MSK-2.1G | 3/8" X 7-1/2" X 6-3/16" STEEL PLATE |
| 7        | 6    | 4499G              | U-BOLT, 3 1/2" OD PIPE, 1/2" DIA.   |
| 8        | 54   | 4650G-BULK         | NUT, 1/2" HEX, GALV                 |
| 9        | 27   | 4750G-BULK         | WASHER, 1/2" NARROW, GALV           |
| 10       | 54   | 4754G-BULK         | 1/2" GALV LOCK WASHER               |
| 11       | 27   | 4454G-BULK         | 1/2" X 1-1/2" A325 GLAV. HEX BOLT   |
| 12       | 3    | 4455G              | GALV. BOLT, 1/2" X 2" LG HEX, A235  |
| 13       | 12   | 4457G              | BOLT, 1/2"-13UNC X 3" GALV HEX      |

|  |  |                 |   |  |  |  |  |                      |  |               |  |           |
|--|--|-----------------|---|--|--|--|--|----------------------|--|---------------|--|-----------|
| THE INFORMATION CONTAINED<br>IN THIS DRAWING IS THE SOLE<br>PROPERTY OF ALT. ANY<br>REPRODUCTION IN PART OR<br>WHOLE WITHOUT THE WRITTEN<br>PERMISSION OF ALT IS<br>PROHIBITED.<br><br>8/28/2020 | CAD GENERATED DRAWING,<br>DO NOT MANUALLY UPDATE |                 |  | 800-950-7960<br>FAX 940-455-2817<br>www.altfabrication.com<br>sales@altfabrication.com |  | 122 Leesley Lane<br>Argyle, Texas<br>76226 |  |                      |  |               |  |           |
|  | APPROVALS  |                 |   | DATE   |  | TITLE:                                     |  |                      |  |               |  |           |
|  | DRAWN      SF                                    |                 |   | 04/24/20   |  | 8' PLATFORM<br>WITH HANDRAIL               |  |                      |  |               |  |           |
|  | CHECKED  |                 |   |  |  |  |  |                      |  |               |  |           |
|  | ENGINEER   |                 |   |  |  | DWG. NO.<br>2123-8HR-1130-1296             |  |                      |  |               |  |           |
| FINISH: HDG  |  | WEIGHT: 2215.31 |   | ISSUED   |  | SCALE: NTS                                 |  | DO NOT SCALE DRAWING |  | SHEET: 1 OF 3 |  | REV.<br>A |



**DETAIL B**



**DETAIL C**

THE INFORMATION CONTAINED  
IN THIS DRAWING IS THE SOLE  
PROPERTY OF ALT. ANY  
REPRODUCTION IN PART OR  
WHOLE WITHOUT THE WRITTEN  
PERMISSION OF ALT IS  
PROHIBITED.

8/28/2020



800-950-7960  
FAX 940-455-2817  
www.altfabrication.com  
sales@altfabrication.com

122 Leesley Lane  
Argyle, Texas  
76226

TITLE:

**8' PLATFORM  
WITH HANDRAIL**

DWG. NO.

**2123-8HR-1130-1296**

REV.

**A**

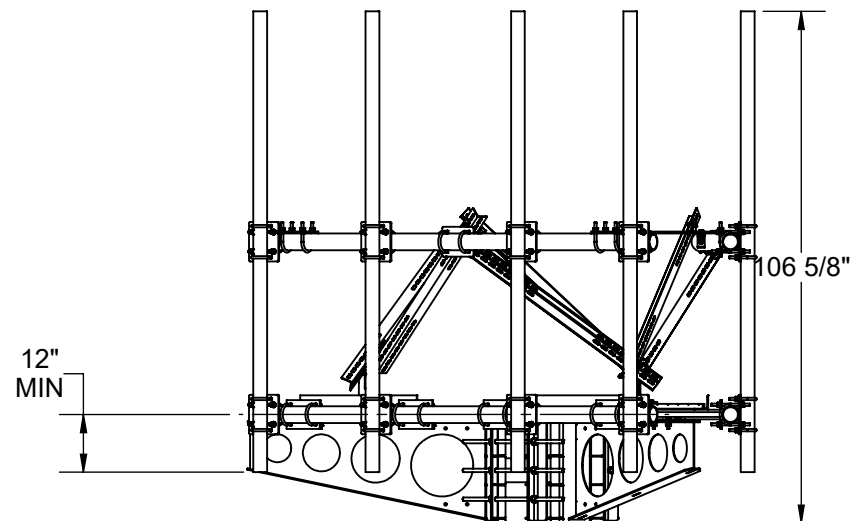
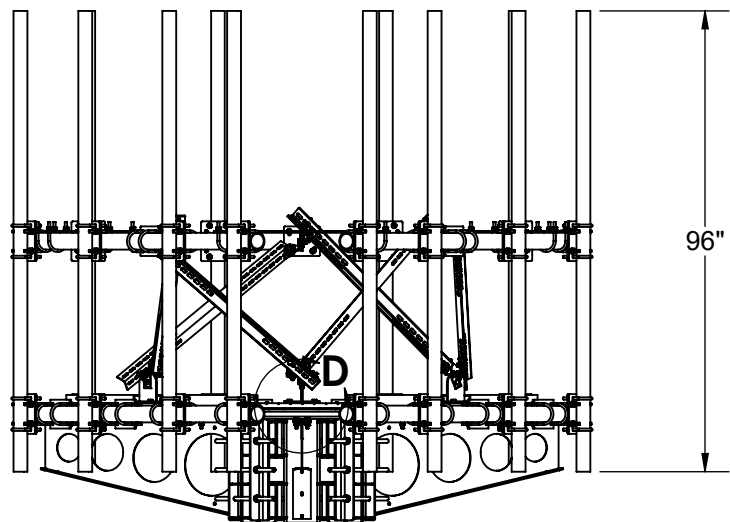
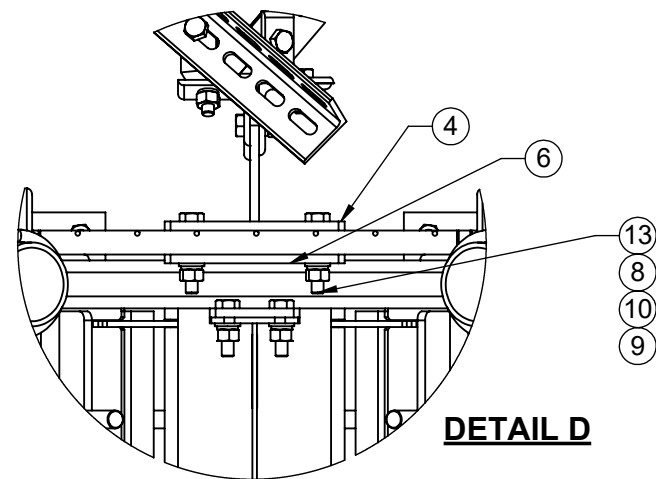
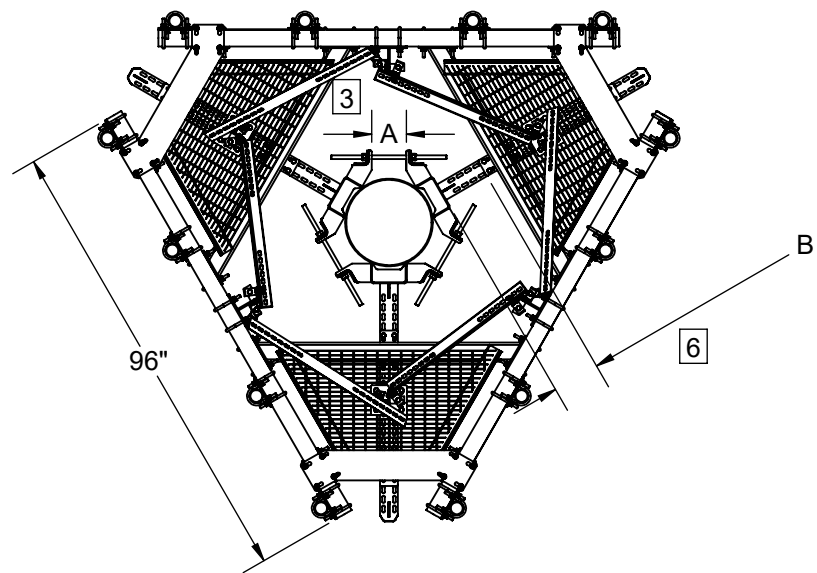
FINISH: HDG


WEIGHT: 2215.31

SCALE: NTS

DO NOT SCALE DRAWING

SHEET: 2 OF 3



|   |  |  |                      |               |
|---|--|--|----------------------|---------------|
| THE INFORMATION CONTAINED<br>IN THIS DRAWING IS THE SOLE<br>PROPERTY OF ALT. ANY<br>REPRODUCTION IN PART OR<br>WHOLE WITHOUT THE WRITTEN<br>PERMISSION OF ALT IS<br>PROHIBITED. |  800-950-7960<br>FAX 940-455-2817<br>www.altfabrication.com<br>sales@altfabrication.com | 122 Leesley Lane<br>Argyle, Texas<br>76226 |                      |               |
|   | TITLE:<br><b>8' PLATFORM<br/>         WITH HANDRAIL</b>  |  |                      |               |
|   | DWG. NO.<br><b>2123-8HR-1130-1296</b>  |  |                      |               |
|   | 8/28/2020  | REV.<br><b>A</b>                           |                      |               |
| FINISH: HDG   | WEIGHT: 2215.31  | SCALE: NTS                                 | DO NOT SCALE DRAWING | SHEET: 3 OF 3 |