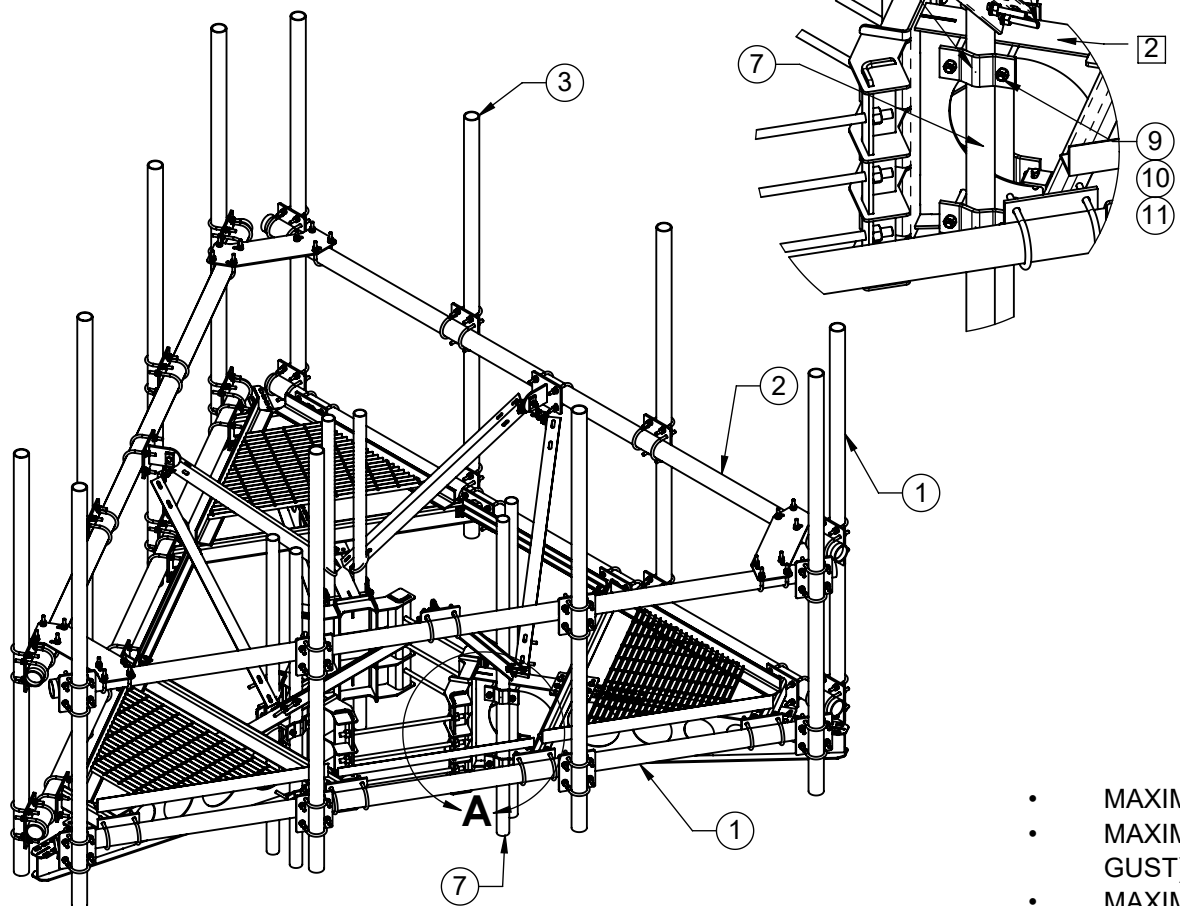


DETAIL A




1. ALT FABRICATION MOUNT 2123-12HR-1130-1296 IS CLASSIFIED AS M2100R(2400)-4[6] BASED ON THE TIA-5053 MOUNTING SYSTEM CLASSIFICATION STANDARD.

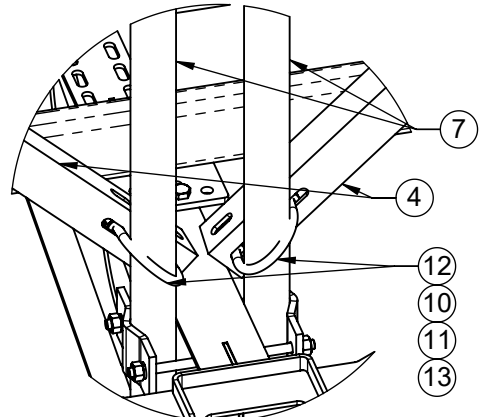
NOTE: MAXIMUM OF 12 PIPES EVENLY SPACED.

2. FULLY INSTALL (3) SUPPORT ARMS, PRIOR TO MOUNTING THE PLATFORM TO ACHIEVE PROPER FIT.
3. DIMENSION "A" MUST BE EQUAL FOR ALL 3 SUPPORT ARMS, AFTER FULLY TIGHTENING ALL-THREADS.
4. FULL COMPLEMENT OF ANTENNA MOUNT PIPES SHOWN.
5. GENERAL INSTALLATION GUIDELINES: CONSTRUCT THE PLATFORM ASSEMBLY, STARTING AT THE MONOPOLE AND WORKING OUTWARD. WITH THE EXCEPTION OF THE SADDLE BRACKET OR TOP HAT ASSEMBLY, KEEP ALL FASTENERS ON THE PLATFORM ASSEMBLY LOOSE UNTIL FULLY ASSEMBLED.
6. DIM "B" MUST BE EQUAL AT ALL THREE ARM LOCATIONS.

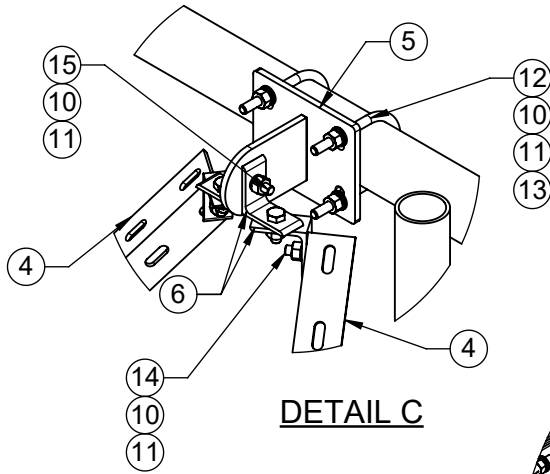
- MAXIMUM MOUNT HEIGHT: 400 ft.
- MAXIMUM ULTIMATE WIND SPEED, NO ICE: 180 mph (3-SECOND GUST)
- MAXIMUM DESIGN WIND SPEED, NO ICE: 140 mph (3-SECOND GUST)
- MAXIMUM DESIGN WIND SPEED, WITH ICE: 60 mph (3-SECOND GUST)
- STRUCTURE CLASS: I or II
- EXPOSURE CATEGORY: B or C
- TOPOGRAPHIC CATEGORY: I
- MAXIMUM DESIGN ICE THICKNESS: 1"
- GUST EFFECT FACTOR, Gh: 1.0
- WIND DIRECTION PROBABILITY FACTOR, Kd: 0.95

ITEM NO.	QTY.	PART NO.	DESCRIPTION
1	1	2123-12	12' MONOPOLE PLATFORM
2	1	2123-12HRKIT	HANDRAIL KIT FOR 12' PLATFORM
3	12	2123-27896-HRMKIT	96" HR PIPE KIT
4	6	7000-2123-5	HANDRAIL BRACE ANGLE
5	3	7000-2116-MSK-2	MOUNTING PLATE WELDMENT
6	12	7000-2116-MSK-3	1/4" X 3" X 3" CLIP ANGLE
7	6	2125-72	2-3/8" OD X 72" (6') GALV PIPE
8	12	7000-2119-1	PIPE TO PIPE CLAMP
9	12	4375G-10	1/2" X 10" GAVANIZED ALL THREAD
10	63	4650G-BULK	NUT, 1/2" HEX, GALV
11	63	4754G-BULK	1/2" GALV LOCK WASHER
12	12	4499G	U-BOLT, 3 1/2" OD PIPE, 1/2" DIA.
13	24	4750G-BULK	WASHER, 1/2" NARROW, GALV
14	12	4454G-BULK	1/2" X 1-1/2" A325 GLAV. HEX BOLT
15	3	4455G	GALV. BOLT, 1/2" X 2" LG HEX, A235

THE INFORMATION CONTAINED IN THIS DRAWING IS THE SOLE PROPERTY OF ALT. ANY REPRODUCTION IN PART OR WHOLE WITHOUT THE WRITTEN PERMISSION OF ALT IS PROHIBITED. 3/31/2020		CAD GENERATED DRAWING, DO NOT MANUALLY UPDATE		 800-950-7960 FAX 940-455-2817 www.altfabrication.com sales@altfabrication.com	122 Leesley Lane Argyle, Texas 76226
		APPROVALS	DATE		
		DRAWN SF	01/30/20		
		CHECKED			
		ENGINEER			
FINISH: HDG		WEIGHT: 2936.26		TITLE: 12' PLATFORM WITH HANDRAIL DWG. NO. 2123-12HR-1130-1296	REV. A
		ISSUED		SCALE: NTS	
				DO NOT SCALE DRAWING	SHEET: 1 OF 3

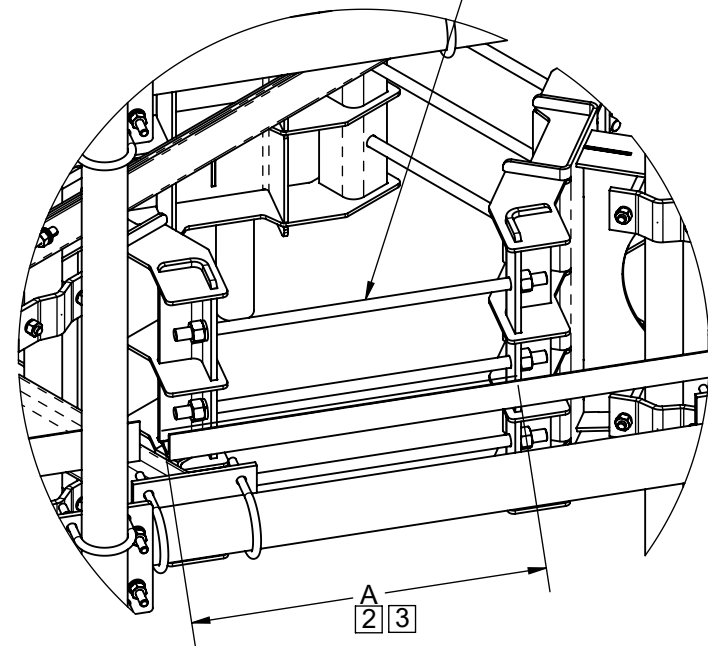


DETAIL D

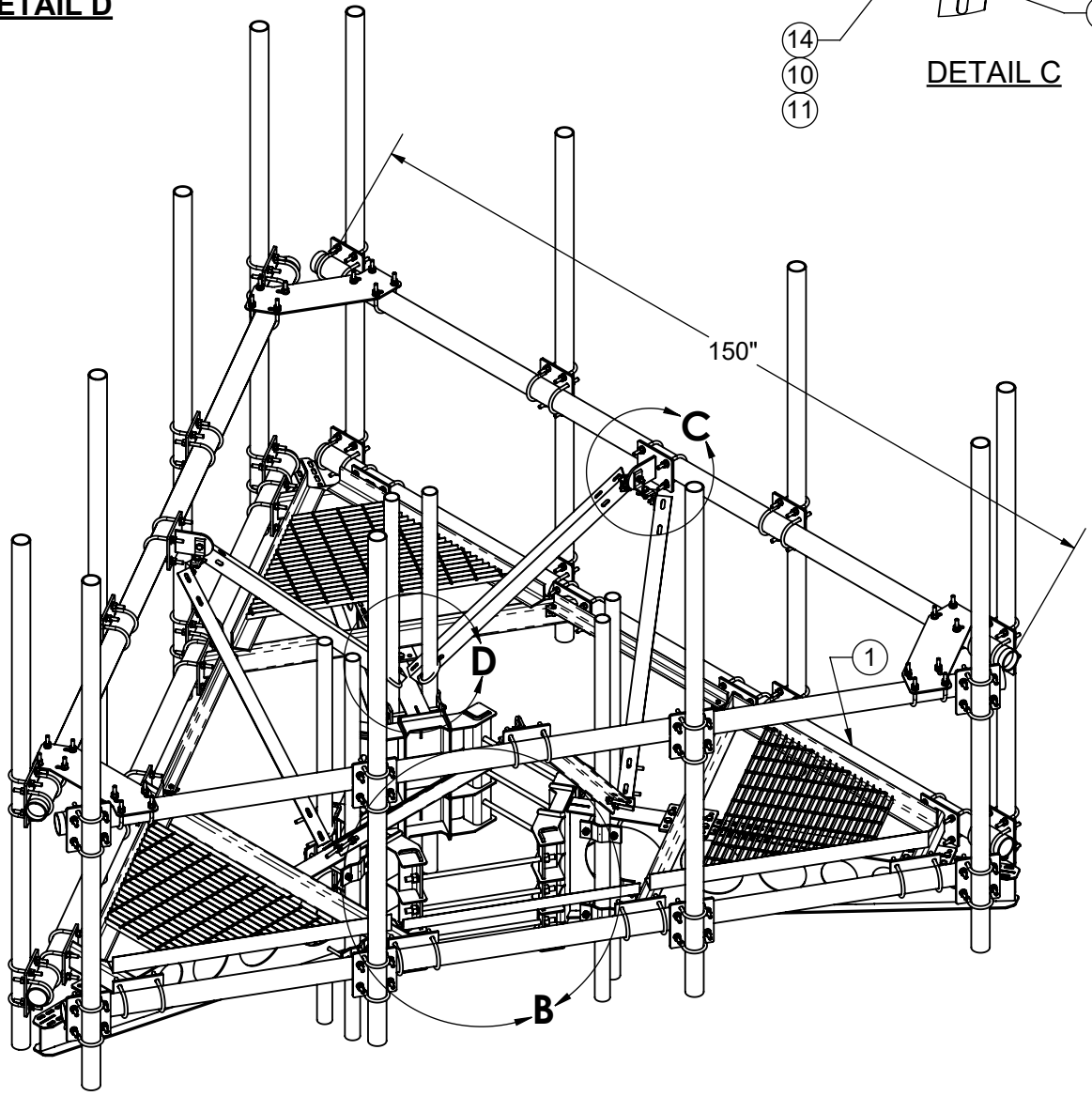


DETAIL C

ALL THREADS WITH FASTENERS INCLUDED IN PLATFORM KIT



DETAIL B



THE INFORMATION CONTAINED
IN THIS DRAWING IS THE SOLE
PROPERTY OF ALT. ANY
REPRODUCTION IN PART OR
WHOLE WITHOUT THE WRITTEN
PERMISSION OF ALT IS
PROHIBITED.

3/31/2020



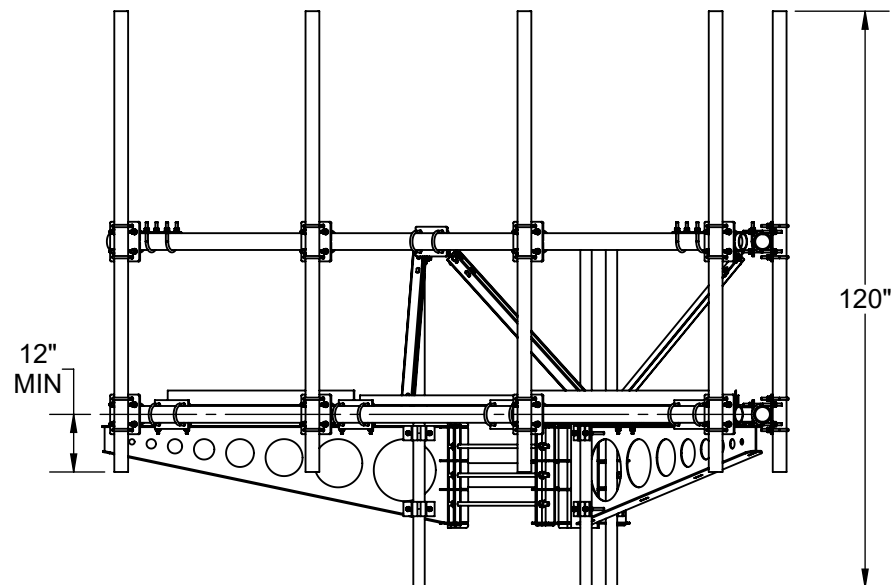
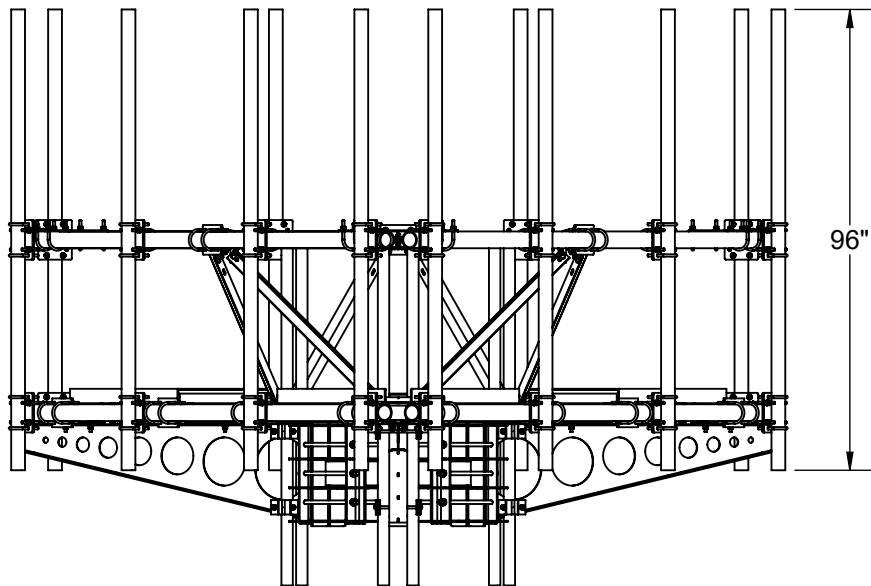
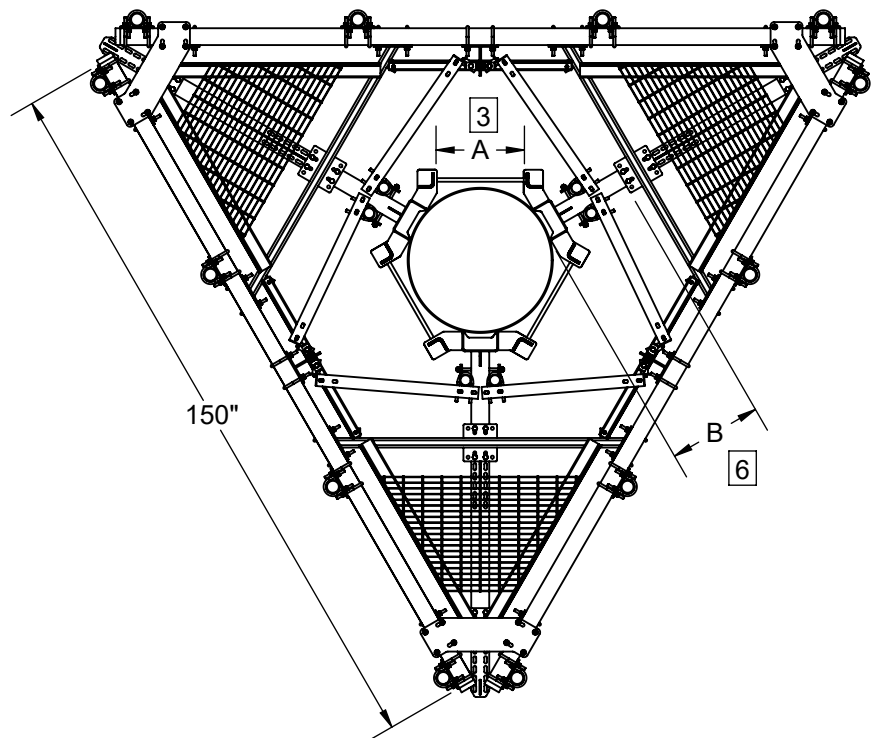
800-950-7960
FAX 940-455-2817
www.altfabrication.com
sales@altfabrication.com

122 Leesley Lane
Argyle, Texas
76226

TITLE:
**12' PLATFORM
WITH HANDRAIL**

DWG. NO.
2123-12HR-1130-1296

REV.
A



THE INFORMATION CONTAINED
IN THIS DRAWING IS THE SOLE
PROPERTY OF ALT. ANY
REPRODUCTION IN PART OR
WHOLE WITHOUT THE WRITTEN
PERMISSION OF ALT IS
PROHIBITED.

3/31/2020

ALT

800-950-7960
FAX 940-455-2817
www.altfabrication.com
sales@altfabrication.com

122 Leesley Lane
Argyle, Texas
76226

TITLE:

12' PLATFORM
WITH HANDRAIL

DWG. NO.

2123-12HR-1130-1296

REV.

A

FINISH: HDG

WEIGHT: 2936.26

SCALE: NTS

DO NOT SCALE DRAWING

SHEET: 3 OF 3