

- 1

FULLY INSTALL ITEM 1 (SADDLE BRACKET) OR THE TOP HAT ASSEMBLY, PRIOR TO MOUNTING THE PLATFORM TO ACHIEVE PROPER FIT.
- 2


DIMENSION "A" MUST BE EQUAL FOR ALL 3 SADDLE BRACKETS, AFTER FULLY TIGHTENING ALL-THREADS.
- 3

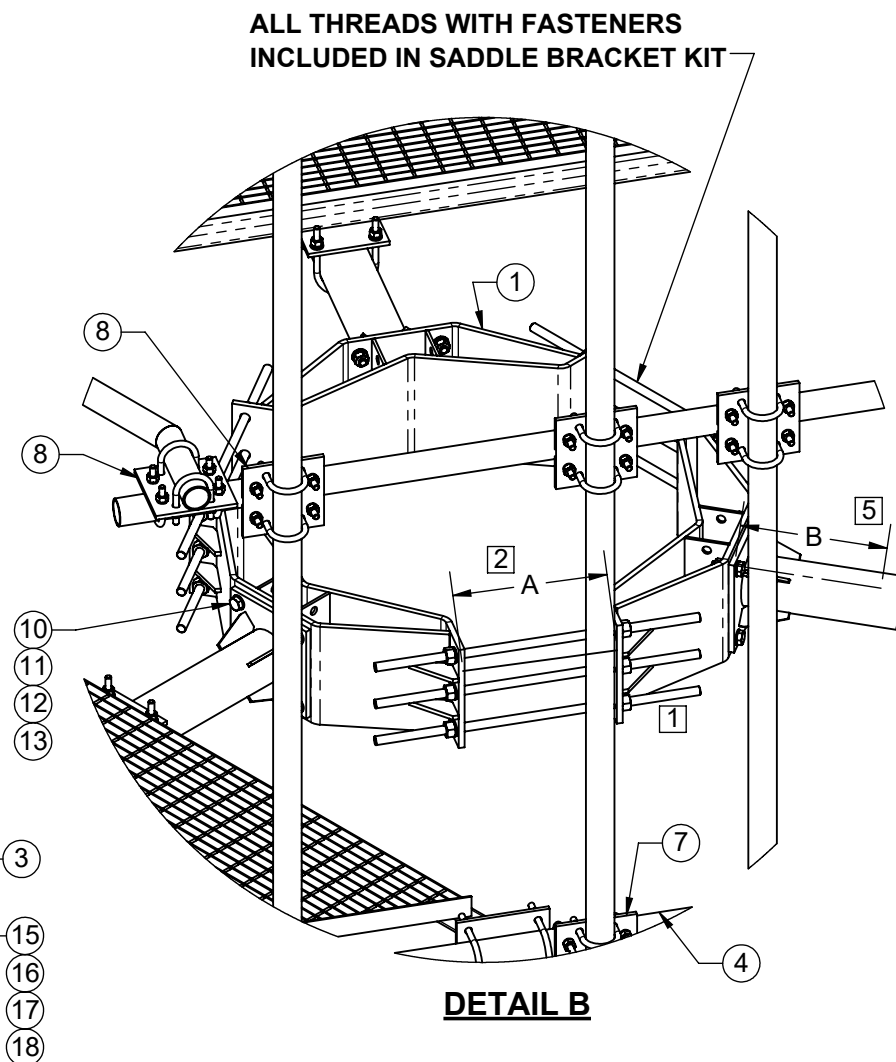
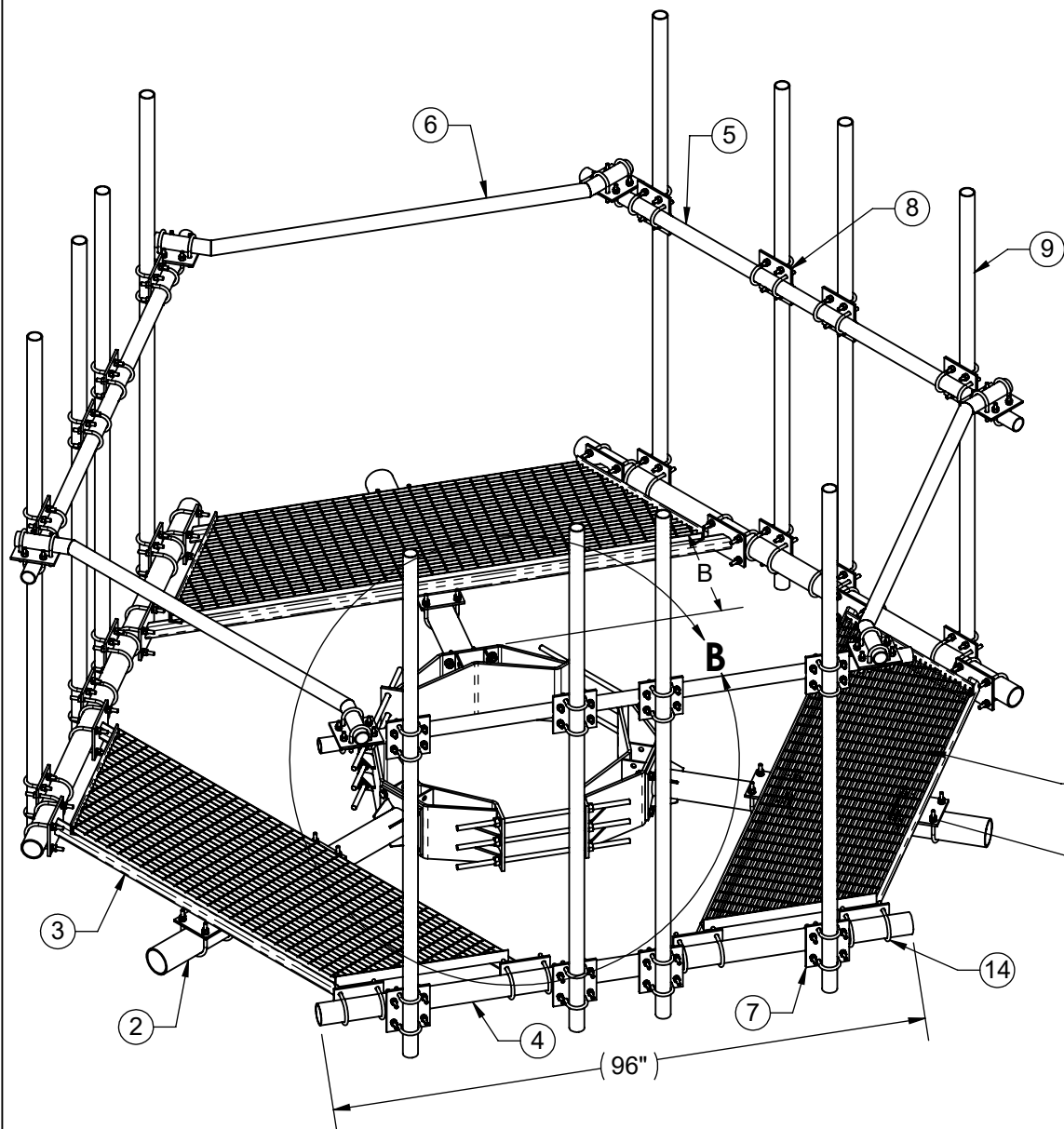
FULL COMPLEMENT OF ANTENNA MOUNT PIPES SHOWN.
- 4

GENERAL INSTALLATION GUIDELINES: CONSTRUCT THE PLATFORM ASSEMBLY, STARTING AT THE MONOPOLE AND WORKING OUTWARD. WITH THE EXCEPTION OF THE SADDLE BRACKET OR TOP HAT ASSEMBLY, KEEP ALL FASTENERS ON THE PLATFORM ASSEMBLY LOOSE UNTIL FULLY ASSEMBLED.
5.

DIM "B" MUST BE EQUAL AT ALL THREE ARM LOCATIONS BETWEEN THE SADDLE BRACKET (OR TOP HAT) ASSEMBLY AND ARM WELDMENT.

ITEM NO.	QTY.	PART NO.	DESCRIPTION
1	1	2121LD-2447	LD SADDLE BRACKET
2	3	7000-2123LD-8-1	PLATFORM SUPPORT ARM
3	3	7000-2123LD-8-6	FLOOR WELDMENT 8' PLATFORM
4	3	7000-2123LD-8-3	3-1/2" (4" OD) .188" WALL GALV. PIPE
5	3	7000-2123LD-8HR-2	2-3/8" OD x 96" (8') Galv Pipe
6	3	7000-2123LD-8HR-3	CORNER HANDRAIL
7	12	2120-20HD	3-1/2" TO 2-3/8" CROSSOVER KIT
8	18	2120-5HD	2" TO 2" CROSSOVER KIT
9	12	2125-96	2-3/8"OD X 96" (8') GALV PIPE
10	12	4467-1G	BOLT, 5/8" X 2-1/4" LG HEX, A325
11	12	4660G-BULK	5/8" GALV HEX NUT
12	24	4760G-BULK	5/8" FLAT WASHER GALV, NARROW
13	12	4764G-BULK	5/8" GALV LOCK WASHER
14	24	4499G	U-BOLT, 3 1/2" OD PIPE, 1/2" DIA.
15	72	4650G-BULK	NUT, 1/2" HEX, A563 GALV
16	72	4754G-BULK	WASHER, 1/2" RGLR LOCK, GALV
17	72	4750G-BULK	WASHER, 1/2" NARROW, GALV
18	12	4499-5G	U-BOLT, 4" (4.50" OD) PIPE, GALV (1/2" DIA)

THE INFORMATION CONTAINED IN THIS DRAWING IS THE SOLE PROPERTY OF ALT. ANY REPRODUCTION IN PART OR WHOLE WITHOUT THE WRITTEN PERMISSION OF ALT IS PROHIBITED.  2/2/2018	CAD GENERATED DRAWING, DO NOT MANUALLY UPDATE		 800-950-7960 FAX 940-455-2817 www.altfabrication.com sales@altfabrication.com	122 Leesley Lane Argyle, Texas 76226		
	APPROVALS	DATE		TITLE: <b>8' MONOPOLE PLATFORM W/ 8HR 24" TO 47" DIA MONOPOLE</b>  DWG. NO. <b>2123LD-8HR-2447-1296</b>		REV. <b>A</b>
	DRAWN	SF 12/07/16				
	CHECKED					
	ENGINEER					
	ISSUED		SCALE: NTS	DO NOT SCALE DRAWING	SHEET: 1 OF 3	



800-950-7960  
FAX 940-455-2817  
www.altfabrication.com  
sales@altfabrication.com

122 Leesley Lane  
Argyle, Texas  
76226

# DO NOT SCALE DRAWING

UNLESS OTHERWISE SPECIFIED DIMENSIONS ARE IN INCHES.  
TOLERANCES ARE:

FRACTIONS	DECIMALS	ANGLES
$\pm 1/32$	$.XX \pm .XX$	$\pm 1^\circ$
	$.XXX \pm .XXX$	

2/2/2018

## MATERIAL PROD#

FINISH HDG

## APPROVALS

DRAWN

SF

CHECKED

ENGR.

ISSUED

MANUFACT.

## DATE

12/07/16

## TITLE:

8' MONOPOLE PLATFORM W/ 8HR  
24" TO 47" DIA MONOPOLE

SIZE

A

DWG. NO.

2123LD-8HR-2447-1296

REV.

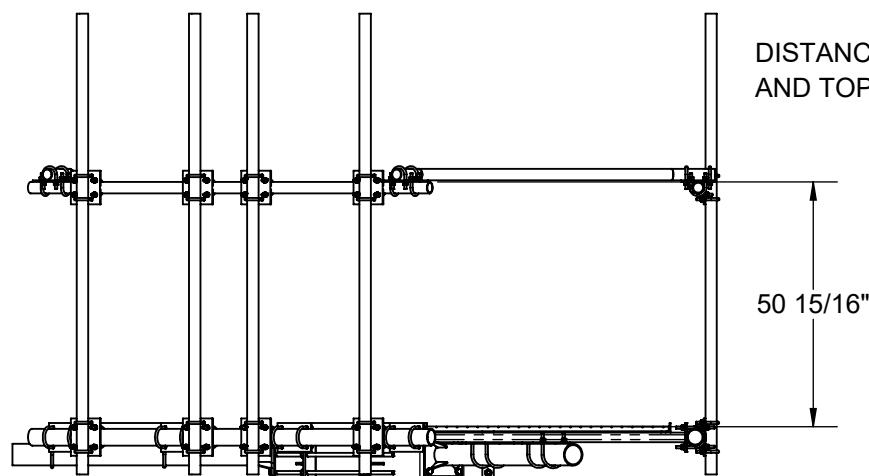
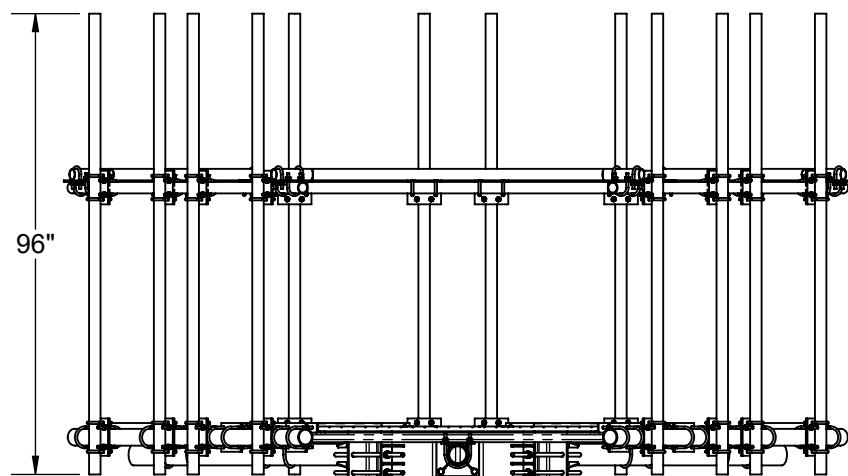
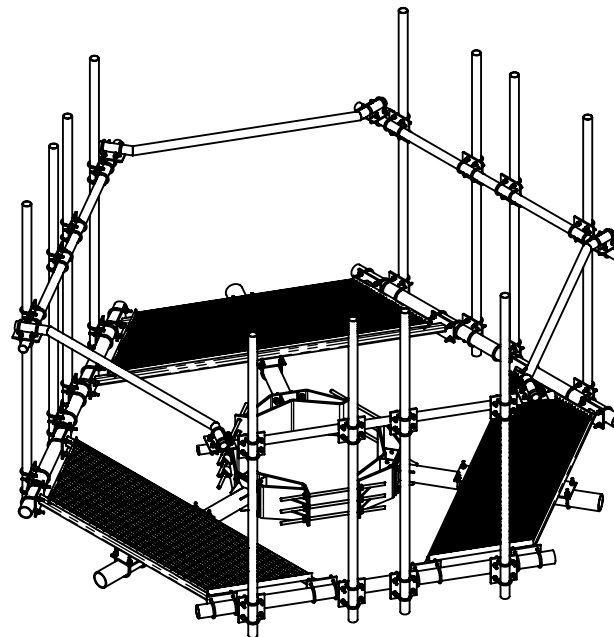
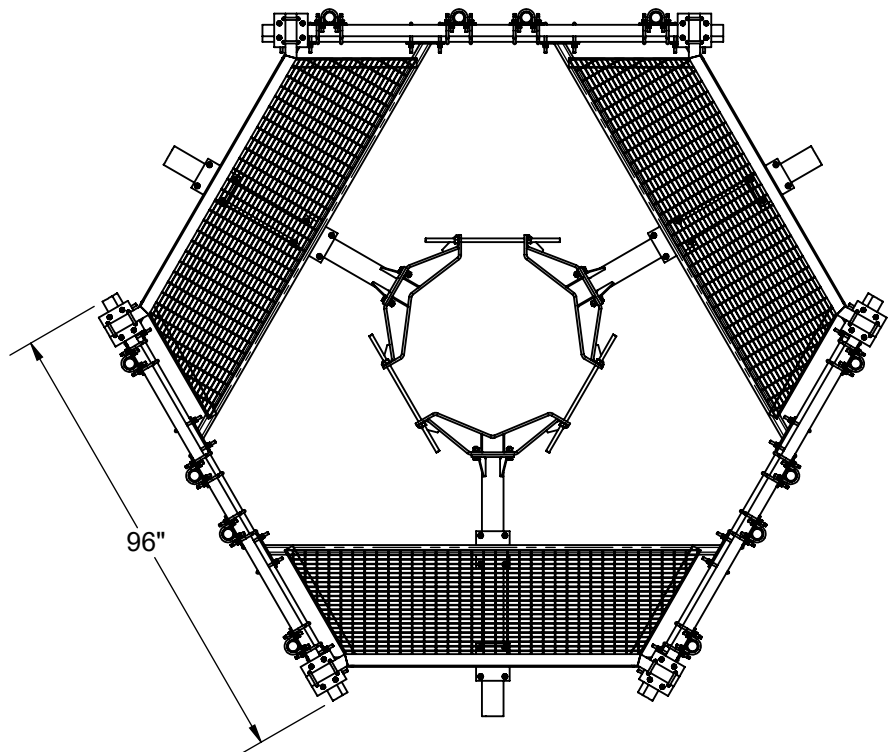
A

SCALE: NTS

WEIGHT 3278.04

SHEET 2 OF 3

THE INFORMATION CONTAINED IN THIS DRAWING IS THE SOLE  
PROPERTY OF ALT. ANY REPRODUCTION IN PART OR WHOLE  
WITHOUT THE WRITTEN PERMISSION OF ALT IS PROHIBITED.



DISTANCE B/W PLATFORM  
AND TOP OF HANDRAIL

50 15/16"



800-950-7960  
FAX 940-455-2817  
www.altfabrication.com  
sales@altfabrication.com

122 Leesley Lane  
Argyle, Texas  
76226

# **DO NOT SCALE DRAWING**

UNLESS OTHERWISE SPECIFIED DIMENSIONS ARE IN INCHES.  
TOLERANCES ARE:

FRACTIONS	DECIMALS	ANGLES
$\pm 1/32$	.XX $\pm$ .XX	$\pm 1^\circ$
	.XXX $\pm$ .XXX	

2/2/2018

## **MATERIAL PROD#**

FINISH HDG

## **APPROVALS**

**DRAWN**

SF

**CHECKED**

**ENGR.**

**ISSUED**

**MANUFACT.**

## **DATE**

12/07/16

## **TITLE:**

**8' MONOPOLE PLATFORM W/ 8HR  
24" TO 47" DIA MONOPOLE**

**SIZE**

**A**

**DWG. NO.**

2123LD-8HR-2447-1296

**REV.**

**A**

**SCALE: NTS**

**WEIGHT 3278.04**

**SHEET 3 OF 3**

**THE INFORMATION CONTAINED IN THIS DRAWING IS THE SOLE  
PROPERTY OF ALT. ANY REPRODUCTION IN PART OR WHOLE  
WITHOUT THE WRITTEN PERMISSION OF ALT IS PROHIBITED.**