
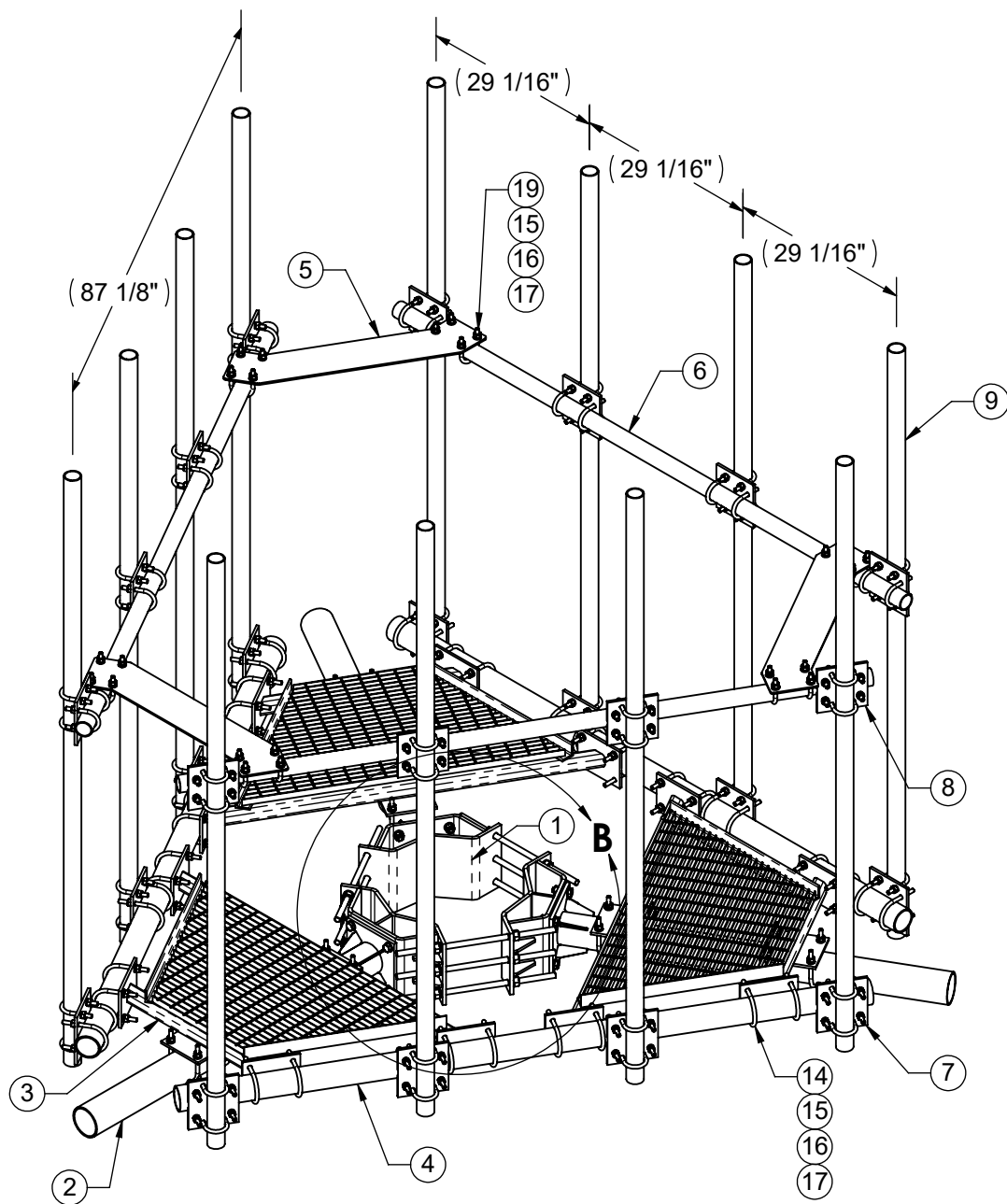


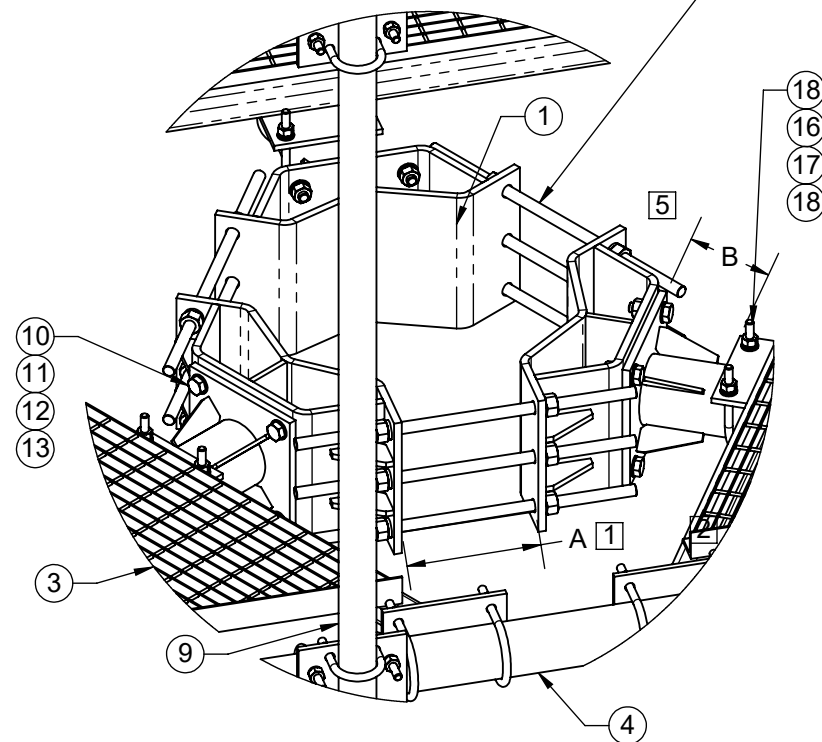
ITEM NO.	QTY.	PART NO.	DESCRIPTION
1	1	2121LD-1130	SADDLE BRACKET ASSEMBLY
2	3	7000-2123LD-8-1	PLATFORM SUPPORT ARM
3	3	7000-2123LD-8-2	FLOOR WELDMENT 8' PLATFORM
4	3	7000-2123LD-8-3	3-1/2" (4" OD) .188" WALL GALV. PIPE
5	3	7000-2123LD-8HR-1	CORNER BRACKET 8' PLATFORM
6	3	7000-2123LD-8HR-2	2-3/8" OD x 96" (8') Galv Pipe
7	12	2120-20HD	3-1/2" TO 2-3/8" CROSSOVER KIT
8	12	2120-5HD	2" TO 2" CROSSOVER KIT
9	12	2125-96	2-3/8"OD X 96" (8') GALV PIPE
10	12	4467-1G	BOLT, 5/8" X 2-1/4" LG HEX, A325
11	12	4660G-BULK	5/8" GALV HEX NUT
12	24	4760G-BULK	5/8" FLAT WASHER GALV, NARROW
13	12	4764G-BULK	5/8" GALV LOCK WASHER
14	24	4499G	U-BOLT, 3 1/2" OD PIPE, 1/2" DIA.
15	92	4650G-BULK	NUT, 1/2" HEX, A563 GALV
16	92	4754G-BULK	WASHER, 1/2" RGLR LOCK, GALV
17	92	4750G-BULK	WASHER, 1/2" NARROW, GALV
18	12	4499-5G	U-BOLT, 4" (4.50" OD) PIPE, GALV (1/2" DIA)
19	12	4499-4G	U-BOLT, 2 3/8" OD PIPE, GALV 1/2" DIA

- 1 FULLY INSTALL ITEM 1 (SADDLE BRACKET) OR THE TOP HAT ASSEMBLY, PRIOR TO MOUNTING THE PLATFORM TO ACHIEVE PROPER FIT.
- 2 DIMENSION "A" MUST BE EQUAL FOR ALL 3 SADDLE BRACKETS, AFTER FULLY TIGHTENING ALL-THREADS.
- 3 FULL COMPLEMENT OF ANTENNA MOUNT PIPES SHOWN.
- 4 GENERAL INSTALLATION GUIDELINES: CONSTRUCT THE PLATFORM ASSEMBLY, STARTING AT THE MONOPOLE AND WORKING OUTWARD. WITH THE EXCEPTION OF THE SADDLE BRACKET OR TOP HAT ASSEMBLY, KEEP ALL FASTENERS ON THE PLATFORM ASSEMBLY LOOSE UNTIL FULLY ASSEMBLED.
- 5 DIM "B" MUST BE EQUAL AT ALL THREE ARM LOCATIONS BETWEEN THE SADDLE BRACKET (OR TOP HAT) ASSEMBLY AND ARM WELDMENT.

THE INFORMATION CONTAINED IN THIS DRAWING IS THE SOLE PROPERTY OF ALT. ANY REPRODUCTION IN PART OR WHOLE WITHOUT THE WRITTEN PERMISSION OF ALT IS PROHIBITED. 7/11/2017	CAD GENERATED DRAWING, DO NOT MANUALLY UPDATE		 800-950-7960 FAX 940-455-2817 www.altfabrication.com sales@altfabrication.com	122 Leesley Lane Argyle, Texas 76226	
	APPROVALS	DATE		TITLE:	
	DRAWN SF	10/26/16	8' MONOPOLE PLATFORM W/ HANDRAIL		
	CHECKED		DWG. NO.		
	ENGINEER		2123LD-8HR-1130-1296		
ISSUED		SCALE: NTS	DO NOT SCALE DRAWING	SHEET: 1 OF 3	REV. A



ALL THREADS WITH FASTENERS
INCLUDED IN SADDLE BRACKET KIT



DETAIL B



800-950-7960
FAX 940-455-2817
www.altfabrication.com
sales@altfabrication.com

122 Leesley Lane
Argyle, Texas
76226

DO NOT SCALE DRAWING

UNLESS OTHERWISE SPECIFIED DIMENSIONS ARE IN INCHES.
TOLERANCES ARE:

FRACTIONS	DECIMALS	ANGLES
$\pm 1/32$	$.XX \pm .XX$	$\pm 1^\circ$
	$.XXX \pm .XXX$	

7/11/2017

MATERIAL PROD#

FINISH HDG

APPROVALS

DRAWN

SF

CHECKED

ENGR.

ISSUED

MANUFACT.

DATE

10/26/16

TITLE:

8' MONOPOLE PLATFORM W/ 8HR
11" TO 30" DIA MONOPOLE

SIZE

A

DWG. NO.

2123LD-8HR-1130-1296

REV.

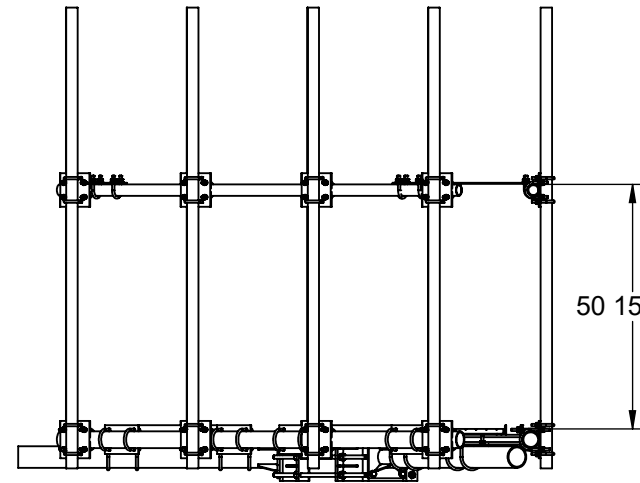
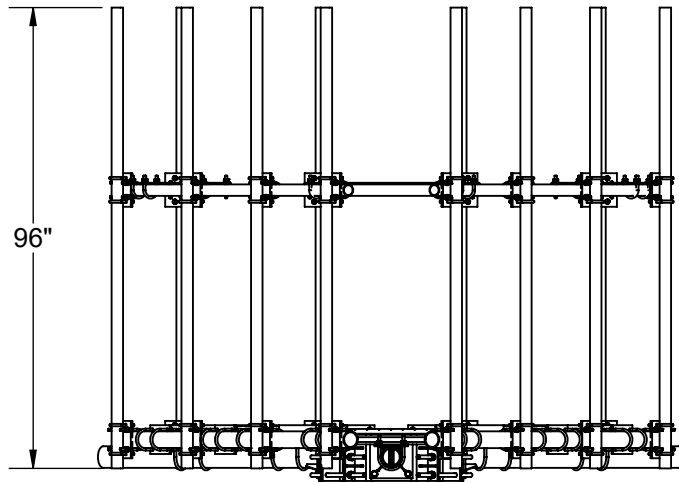
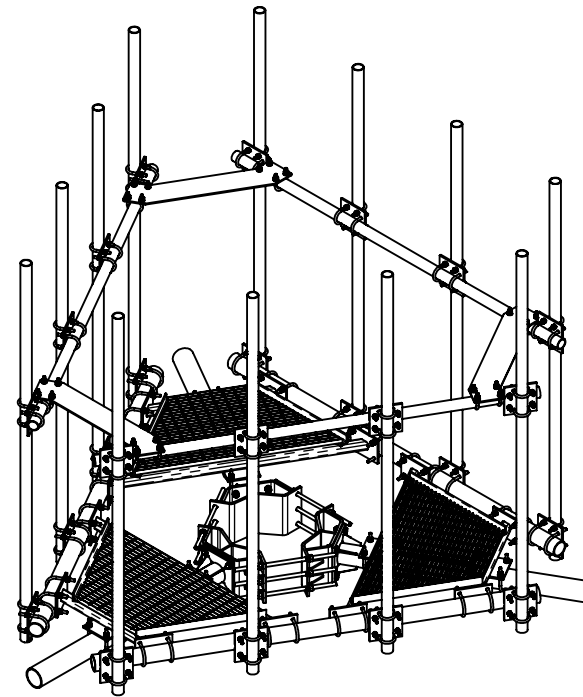
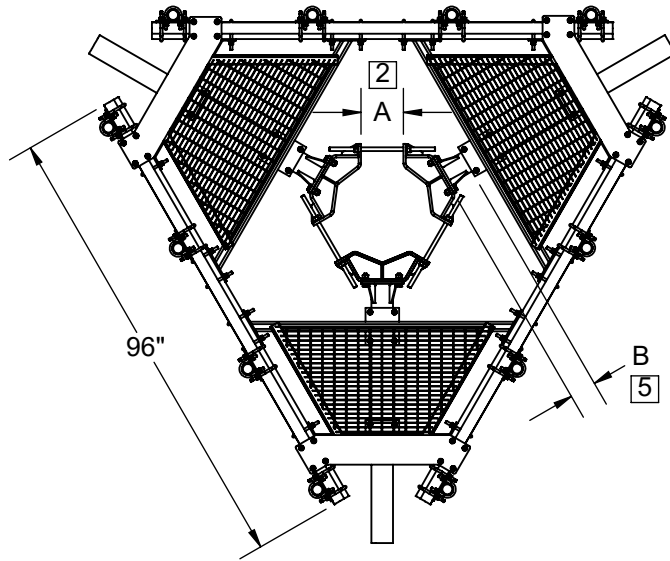
A

SCALE: NTS

WEIGHT 1705.5

SHEET 2 OF 3

THE INFORMATION CONTAINED IN THIS DRAWING IS THE SOLE
PROPERTY OF ALT. ANY REPRODUCTION IN PART OR WHOLE
WITHOUT THE WRITTEN PERMISSION OF ALT IS PROHIBITED.



DISTANCE B/W PLATFORM
AND TOP OF HANDRAIL



800-950-7960
FAX 940-455-2817
www.altfabrication.com
sales@altfabrication.com

122 Leesley Lane
Argyle, Texas
76226

DO NOT SCALE DRAWING

UNLESS OTHERWISE SPECIFIED DIMENSIONS ARE IN INCHES.
TOLERANCES ARE:

FRACTIONS	DECIMALS	ANGLES
$\pm 1/32$	$.XX \pm .XX$	$\pm 1^\circ$
	$.XXX \pm .XXX$	

7/11/2017

MATERIAL PROD#

FINISH HDG

APPROVALS

DRAWN

SF

CHECKED

ENGR.

ISSUED

MANUFACT.

DATE

10/26/16

TITLE:

8' MONOPOLE PLATFORM W/ 8HR

SIZE

A

DWG. NO.

2123LD-8HR-1130-1296

REV.

A

SCALE: NTS

WEIGHT 1705.5

SHEET 3 OF 3

THE INFORMATION CONTAINED IN THIS DRAWING IS THE SOLE
PROPERTY OF ALT. ANY REPRODUCTION IN PART OR WHOLE
WITHOUT THE WRITTEN PERMISSION OF ALT IS PROHIBITED.