
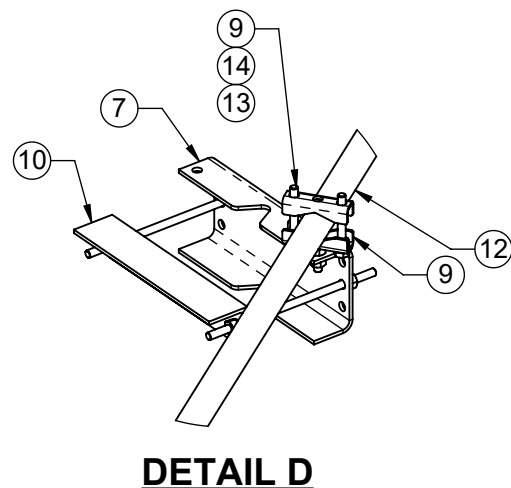
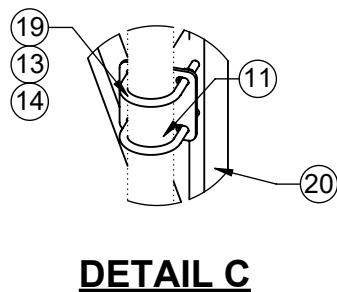
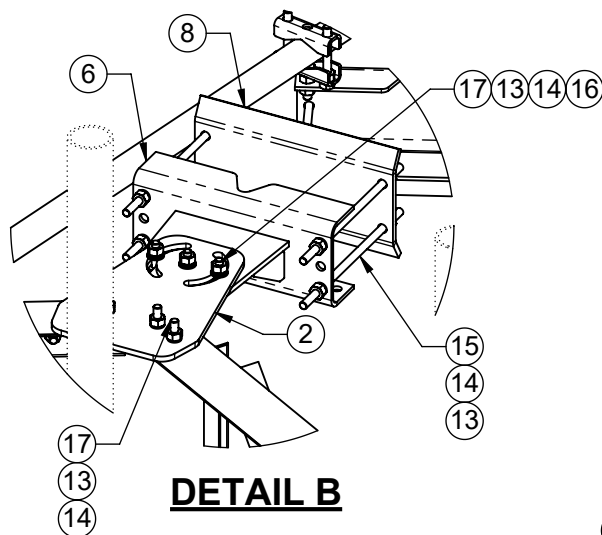
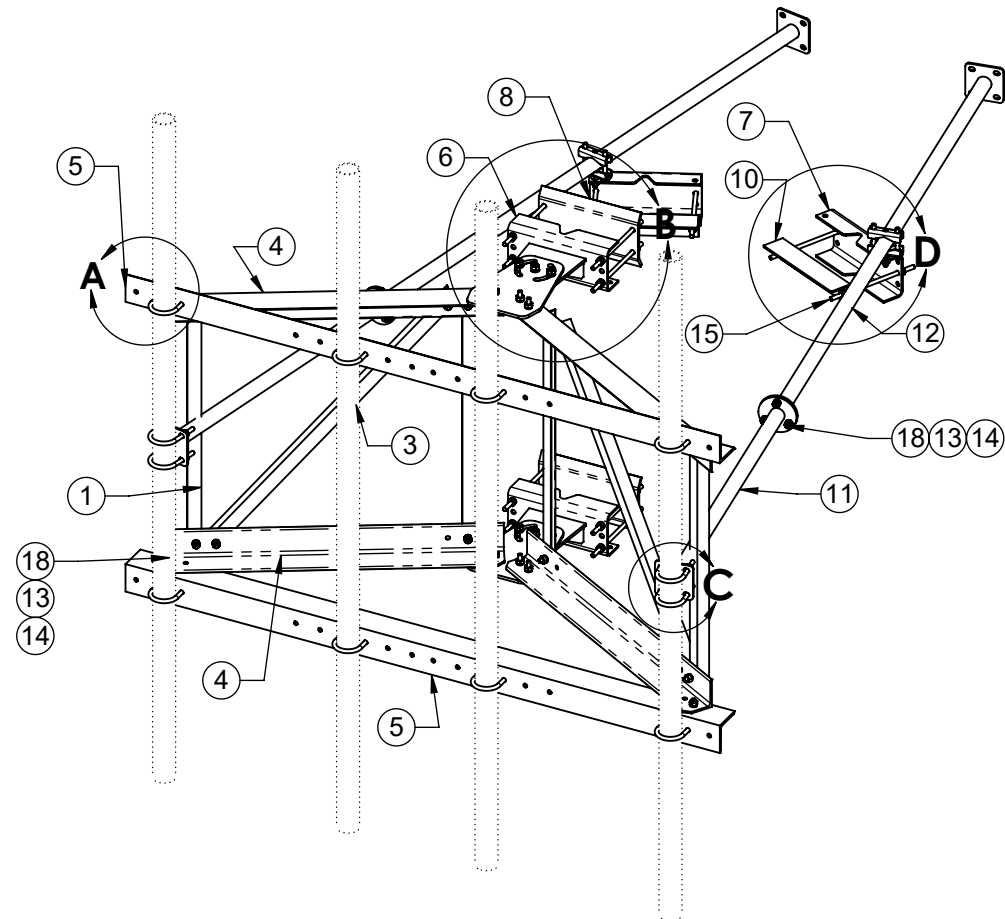
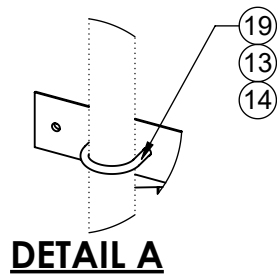



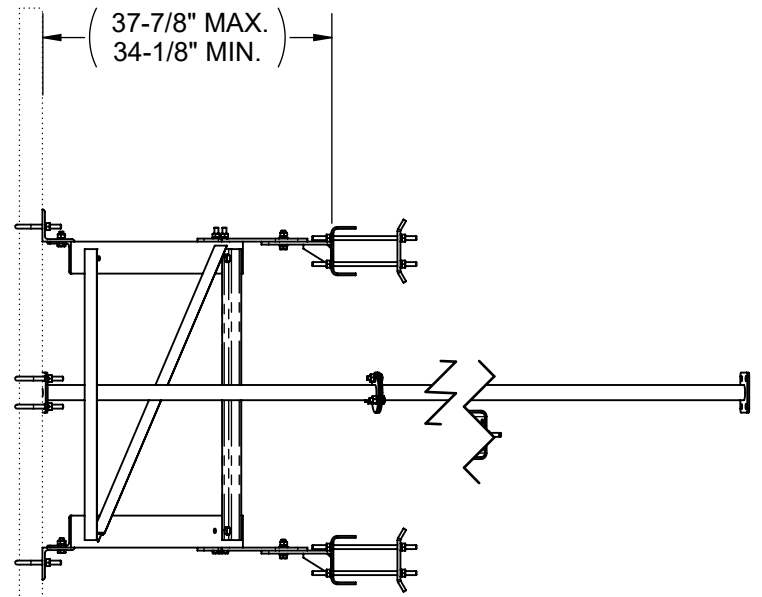
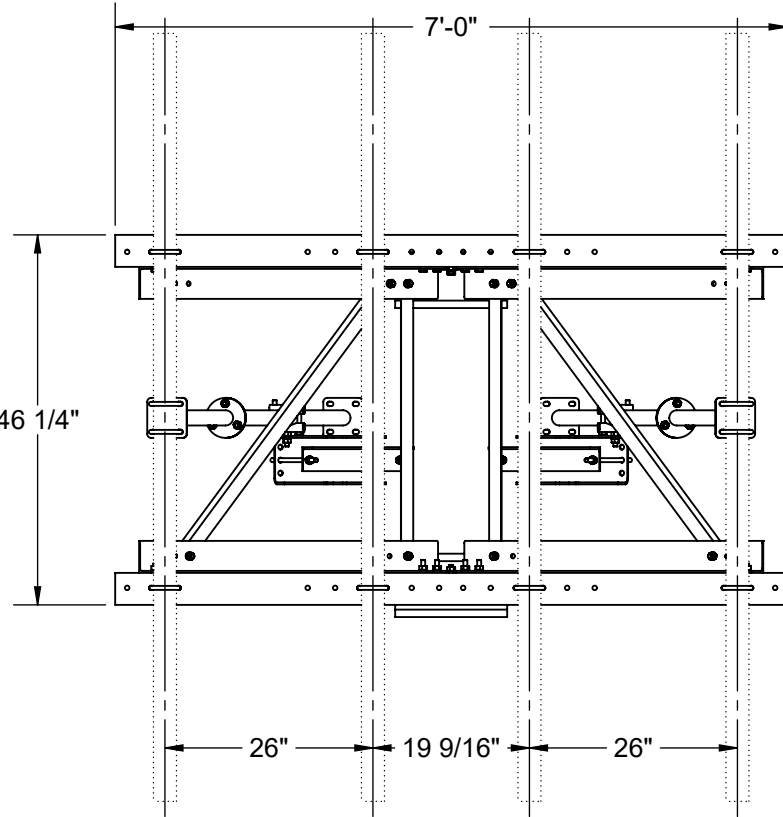
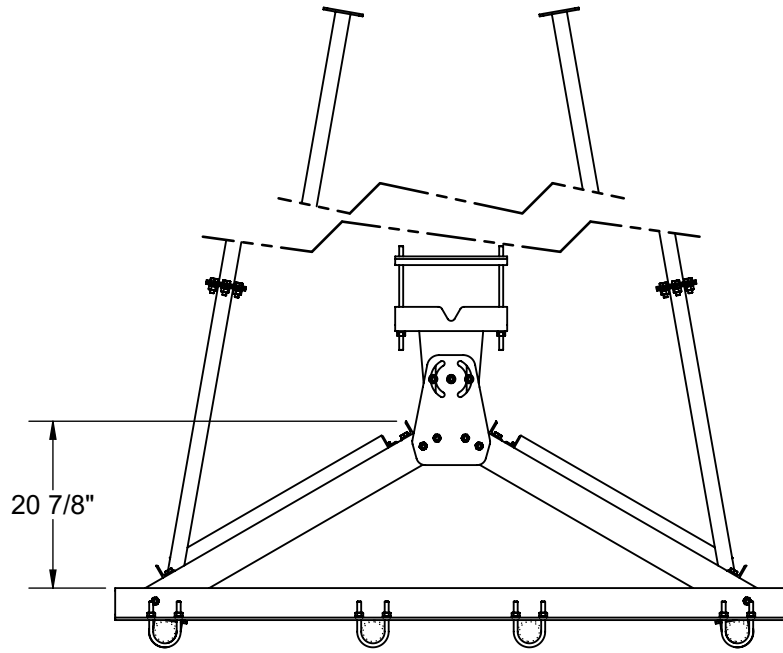
1. ALT FABRICATION MOUNT2116S-12 ISCLASSIFIED AS M350R(750)-4[6] BASED ON THE TIA-5053 MOUNTING SYSTEM CLASSIFICATION STANDARD.
- 2 ITEM 20, ANTENNA MOUNT PIPE, TO BE ORDERED SEPERATELY.  
**NOTE:** MUST HAVE A MIN. OF 4 PIPES FOR MOUNT TO MEET LOADING REQUIREMENTS.
3. FULL COMPLEMENT OF ANTENNA MOUNT PIPES SHOWN.
- 4 ITEM 16, FLAT WASHERS, TO BE INSTALLED AGAINST SLOTS ON ITEMS 2 AND 6.
- 5 INSTALL THE CENTER PIVOT BOLT/NUT/WASHER ASSEMBLY AT THE TOP AND BOTTOM TOWER LEG BRACKET WITH THE DESIRED TOWER TAPER THEN PARTIALLY TIGHTEN. ROTATE THE SECTOR FRAME TO DESIRED AZIMUTH POSITION. INSTALL OUTER (2) BOLT/NUT/WASHER THROUGH THE CURVED SLOTS IN ITEM 3 AT THE TOP AND BOTTOM.
- 6 TO ACHIEVE POSTED WIND RATING, FULLY TIGHTEN ALL (6) AZIMUTH PIVOT POINT BOLTS BY TURNING NUTS 1/3 PAST "SNUG TIGHT" CONDITION AS DEFINED BY AISC 9TH EDITION ASD AFTER FINAL AZIMUTH POSITIONING.
7. AZIMUTH ROTATION: ±60° ON CENTER LINE OF TOWER LEG.
8. MAX TOWER LEG SIZE:  
ROUND LEG - 8" OD  
90° ANGLE LEG - 8" X 8"  
60° ANGLE LEG - 11" TIP TO TIP

ITEM NO.	QTY.	PART NO.	DESCRIPTION
1	4	7000-2116R-2-2	VERTICAL, FAN TRUSS, L1-3/4" X 3/16"
2	2	7000-2116R-2-3	TAPER BRACKET
3	2	7000-2116R-2-5	DIAGONAL, FAN TRUSS, L1-3/4" X 3/16"
4	4	7000-2116S-4	CHORD, FAN TRUSS, L4" X 1/4"
5	2	7000-2116S-7	MAIN FACE ANGLE, L4" X 5/16"
6	2	7000-2120-TB	WELDMENT, TOWER LEG BRACKET, UNIVERSAL
7	2	7000-2120-TB.1	TAPER BRACKET LEG ADAPTOR
8	2	7000-2120-AA.2	BACKPLATE, ANGLE LEG ADAPTER,
9	2	7000-2120-KD.2	SWAY BAR CLAMP ASSEMBLY
10	2	7000-2120-KD.3	CLAMP ANGLE 1/4" X 3" X 14"
11	2	7000-2120-KD.42	1.9"OD X 42" SWAY BAR WELDMENT
12	2	7000-2120-KD.84	1.9"OD X 84" SWAY BAR WELDMENT
13	86	4650G-BULK	NUT, 1/2" HEX, A563 GALV
14	92	4754G-BULK	WASHER, 1/2" RGLR LOCK, GALV
15	12	4375G-13	1/2" X 13" ALL THREAD
16	12	4750G-BULK	WASHER, 1/2" NARROW, GALV
17	14	4455G	BOLT, 1/2" X 2" LG HEX, A325 GLAV.
18	22	4454G-BULK	1/2" X 1-1/2" A325 GLAV. HEX BOLT
19	12	4499-2G	1/2" GALV U-BOLT FOR 2-7/8"OD
20	4	2126-96	2-7/8" OD X 96" GALV PIPE


THE INFORMATION CONTAINED IN THIS DRAWING IS THE SOLE PROPERTY OF ALT. ANY REPRODUCTION IN PART OR WHOLE WITHOUT THE WRITTEN PERMISSION OF ALT IS PROHIBITED.  10/23/2019  FINISH: HDG    WEIGHT: 462.67	CAD GENERATED DRAWING, DO NOT MANUALLY UPDATE		 800-950-7960 FAX 940-455-2817 www.altfabrication.com sales@altfabrication.com	122 Leesley Lane Argyle, Texas 76226	
	APPROVALS	DATE		TITLE: <b>7' SECTOR FRAME ROTATABLE</b>	
	DRAWN    SF	10/03/19			
	CHECKED			DWG. NO. <b>2116S-7</b>	
	ENGINEER				
ISSUED		SCALE: NTS	DO NOT SCALE DRAWING	SHEET: 1 OF 3	



THE INFORMATION CONTAINED IN THIS DRAWING IS THE SOLE PROPERTY OF ALT. ANY REPRODUCTION IN PART OR WHOLE WITHOUT THE WRITTEN PERMISSION OF ALT IS PROHIBITED.  10/23/2019	 800-950-7960 FAX 940-455-2817 www.altfabrication.com sales@altfabrication.com	122 Leesley Lane Argyle, Texas 76226	
		TITLE: <b>7' SECTOR FRAME                  ROTATABLE</b>	
FINISH: HDG	WEIGHT: 462.67	SCALE: NTS DO NOT SCALE DRAWING	SHEET: 2 OF 3
DWG. NO. <b>2116S-7</b>			REV. <b>A</b>



**SIDE VIEW**

<p>THE INFORMATION CONTAINED IN THIS DRAWING IS THE SOLE PROPERTY OF ALT. ANY REPRODUCTION IN PART OR WHOLE WITHOUT THE WRITTEN PERMISSION OF ALT IS PROHIBITED.</p> <p>10/23/2019</p>	 <p>800-950-7960 FAX 940-455-2817 www.altfabrication.com sales@altfabrication.com</p>	<p>122 Leesley Lane Argyle, Texas 76226</p>			
			<p>TITLE: <b>7' SECTOR FRAME ROTATABLE</b></p>		
<p>FINISH: HDG</p>	<p>WEIGHT: 462.67</p>	<p>SCALE: NTS</p>	<p>DO NOT SCALE DRAWING</p>	<p>SHEET: 3 OF 3</p>	<p>REV. <b>A</b></p>