

- MAXIMUM MOUNT HEIGHT: 400 ft.
- MAXIMUM ULTIMATE WIND SPEED, NO ICE: 180 mph (3-SECOND GUST)
- MAXIMUM DESIGN WIND SPEED, NO ICE: 140 mph (3-SECOND GUST)
- MAXIMUM DESIGN WIND SPEED, WITH ICE: 60 mph (3-SECOND GUST)
- STRUCTURE CLASS: I or II
- EXPOSURE CATEGORY: B or C
- TOPOGRAPHIC CATEGORY: I
- MAXIMUM DESIGN ICE THICKNESS: 1"
- GUST EFFECT FACTOR, Gh: 1.0
- WIND DIRECTION PROBABILITY FACTOR, Kd: 0.95

1. ALT FABRICATION MOUNT 2116S-12-4-96 IS CLASSIFIED AS M2350R(2500)-4[6] BASED ON THE TIA-5053 MOUNTING SYSTEM CLASSIFICATION STANDARD.

**NOTE:** MAXIMUM OF 4 PIPES EVENLY SPACED.

2. ITEM 16, FLAT WASHERS, TO BE INSTALLED AGAINST SLOTS ON ITEMS 2 AND 6.
3. INSTALL THE CENTER PIVOT BOLT/NUT/WASHER ASSEMBLY AT THE TOP AND BOTTOM TOWER LEG BRACKET WITH THE DESIRED TOWER TAPER THEN PARTIALLY TIGHTEN. ROTATE THE SECTOR FRAME TO DESIRED AZIMUTH POSITION. INSTALL OUTER (2) BOLT/NUT/WASHER THROUGH THE CURVED SLOTS IN ITEM 3 AT THE TOP AND BOTTOM.
4. TO ACHIEVE POSTED WIND RATING, FULLY TIGHTEN ALL (6) AZIMUTH PIVOT POINT BOLTS BY TURNING NUTS 1/3 PAST "SNUG TIGHT" CONDITION AS DEFINED BY AISC 9TH EDITION ASD AFTER FINAL AZIMUTH POSITIONING.
5. AZIMUTH ROTATION:  $\pm 60^\circ$  ON CENTER LINE OF TOWER LEG.
6. MIN. MAX. TOWER LEG SIZE:  
 ROUND LEG - 1-1/2" OD TO 8" OD  
 90° ANGLE LEG - 2-1/2" X 2-1/2" TO 8" X 8"  
 60° ANGLE LEG - 2-1/2" X 2-1/2" TO 11" TIP TO TIP

ITEM NO.	QTY.	PART NO.	DESCRIPTION
1	4	7000-2116R-2-2	VERTICAL, FAN TRUSS, L1-3/4" X 3/16"
2	2	7000-2116R-2-3	TAPER BRACKET
3	2	7000-2116R-2-5	DIAGONAL, FAN TRUSS, L1-3/4" X 3/16"
4	4	7000-2116S-4	CHORD, FAN TRUSS, L4" X 1/4"
5	2	7000-2116S-12	MAIN FACE CHORD, L4" X 5/16"
6	2	7000-2120-TB	WELDMENT, TOWER LEG BRACKET, UNIVERSAL
7	2	7000-2120-TB.1	TAPER BRACKET LEG ADAPTOR
8	2	7000-2120-AA.2	BACKPLATE, ANGLE LEG ADAPTER,
9	2	7000-2120-KD.2	SWAY BAR CLAMP ASSEMBLY
10	2	7000-2120-KD.3	CLAMP ANGLE 1/4" X 3" X 14"
11	2	7000-2120-KD.42	1.9"OD X 42" SWAY BAR WELDMENT
12	2	7000-2120-KD.84	84" SWAY BAR SECTION, 1.90" O.D. PIPE
13	86	4650G-BULK	NUT, 1/2" HEX, GALV
14	92	4754G-BULK	1/2" GALV LOCK WASHER
15	12	4375G-13	1/2" X 13" ALL THREAD
16	12	4750G	WASHER, 1/2" NARROW, GALV
17	14	4455G	GALV. BOLT, 1/2" X 2" LG HEX, A235
18	22	4454G-BULK	1/2" X 1-1/2" A325 GLAV. HEX BOLT
19	12	4499-2G	1/2" GALV U-BOLT FOR 2-7/8"OD
20	4	2126-96	2-7/8" OD X 96" GALV PIPE

THE INFORMATION CONTAINED IN THIS DRAWING IS THE SOLE PROPERTY OF ALT. ANY REPRODUCTION IN PART OR WHOLE WITHOUT THE WRITTEN PERMISSION OF ALT IS PROHIBITED.

6/10/2020

FINISH: HDG WEIGHT: 739.18

CAD GENERATED DRAWING, DO NOT MANUALLY UPDATE

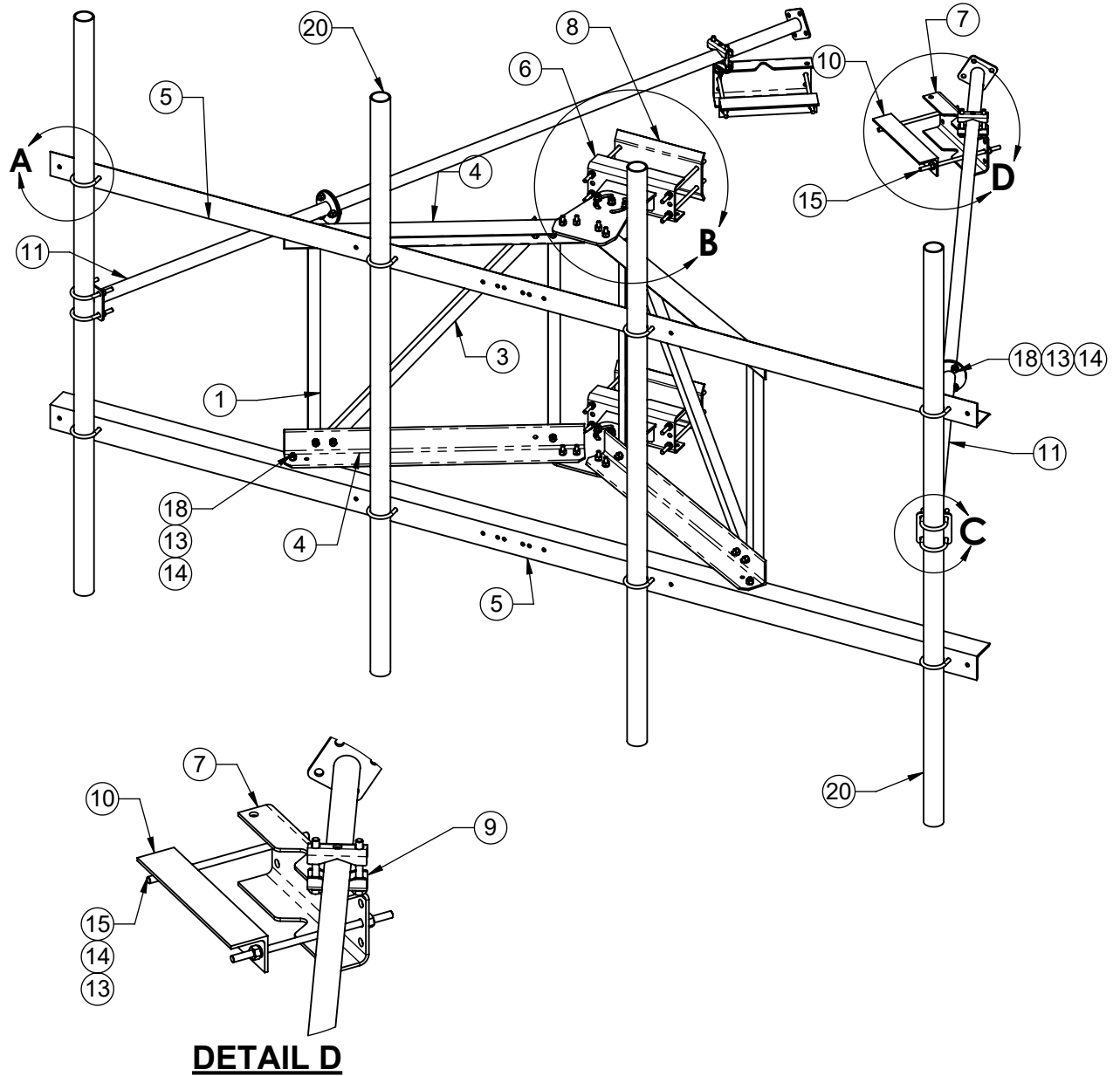
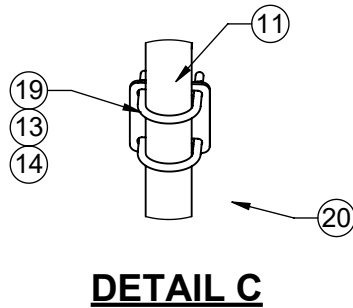
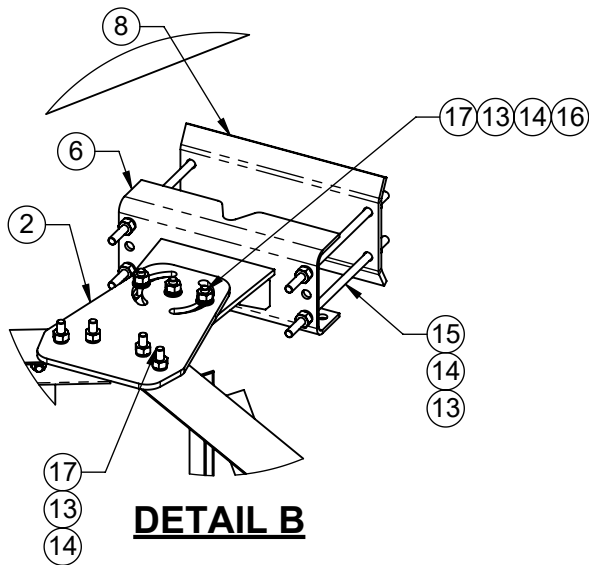
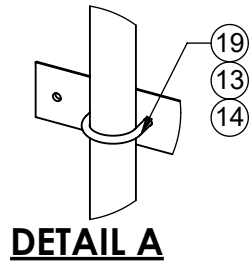
APPROVALS	DATE
DRAWN SF	11/05/19
CHECKED	
ENGINEER	
ISSUED	




800-950-7960  
 FAX 940-455-2817  
 www.altfabrication.com  
 sales@altfabrication.com

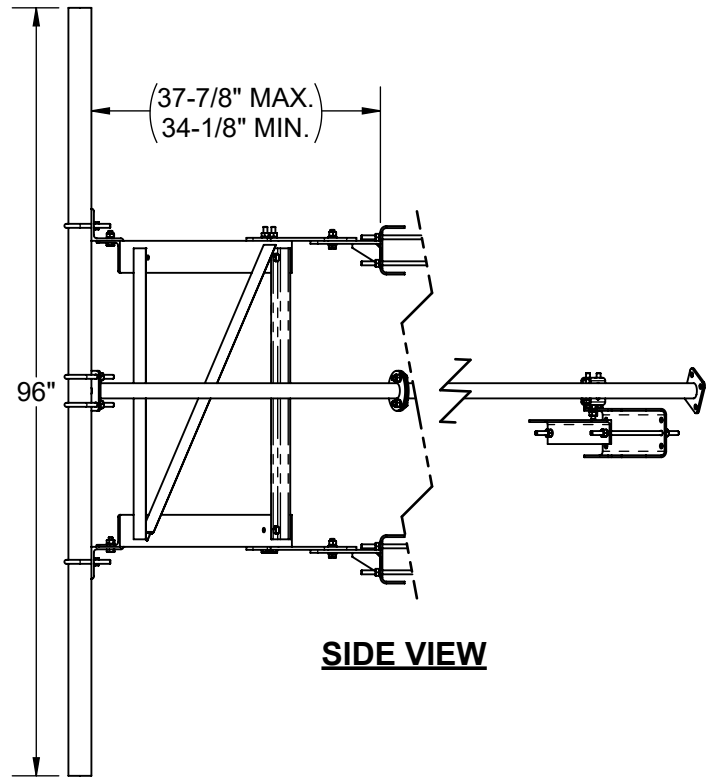
122 Leesley Lane  
 Argyle, Texas  
 76226

TITLE: <b>12' SECTOR FRAME S-SERIES</b>		REV. <b>A</b>
DWG. NO. <b>2116S-12-4-96</b>		
SCALE: NTS	DO NOT SCALE DRAWING	SHEET: 1 OF 3



<p>THE INFORMATION CONTAINED IN THIS DRAWING IS THE SOLE PROPERTY OF ALT. ANY REPRODUCTION IN PART OR WHOLE WITHOUT THE WRITTEN PERMISSION OF ALT IS PROHIBITED.</p> <p>6/10/2020</p>	 <p>800-950-7960 FAX 940-455-2817 www.altfabrication.com sales@altfabrication.com</p>	<p>122 Leesley Lane Argyle, Texas 76226</p>			
			<p>TITLE: <b>12' SECTOR FRAME S-SERIES</b></p>		
<p>FINISH: HDG</p>	<p>WEIGHT: 739.18</p>	<p>SCALE: NTS</p>	<p>DO NOT SCALE DRAWING</p>	<p>SHEET: 2 OF 3</p>	<p>REV. <b>A</b></p>

MAX. AND MIN.  
ANGLE LIMITS OF  
THE TIE BACKS IS  $\pm 20^\circ$



20 7/8"

12'-6"

"e" DENOTES ALLOWABLE VERTICAL  
CENTER LINE OFFSET OF  
APPURTENANCE AND MOUNTING PIPE

MOUNT  
CENTER LINE

46 1/4"

e  
e

48"

41 9/16"

48"

THE INFORMATION CONTAINED  
IN THIS DRAWING IS THE SOLE  
PROPERTY OF ALT. ANY  
REPRODUCTION IN PART OR  
WHOLE WITHOUT THE WRITTEN  
PERMISSION OF ALT IS  
PROHIBITED.



800-950-7960  
FAX 940-455-2817  
www.altfabrication.com  
sales@altfabrication.com

122 Leesley Lane  
Argyle, Texas  
76226

TITLE:  
**12' SECTOR FRAME  
S-SERIES**

DWG. NO.  
**2116S-12-4-96**

REV.  
**A**

6/10/2020