
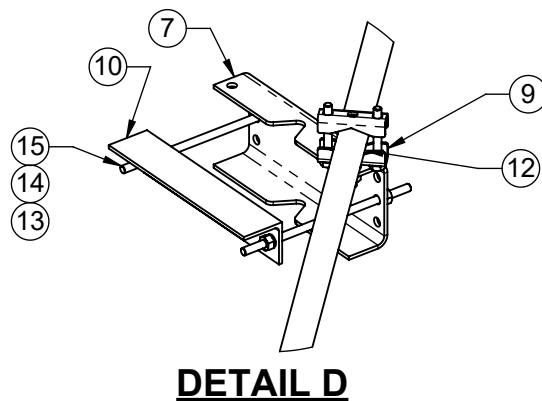
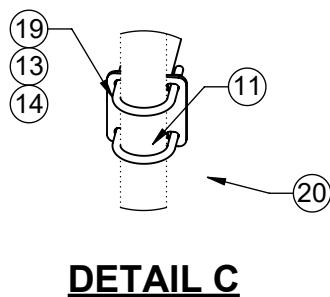
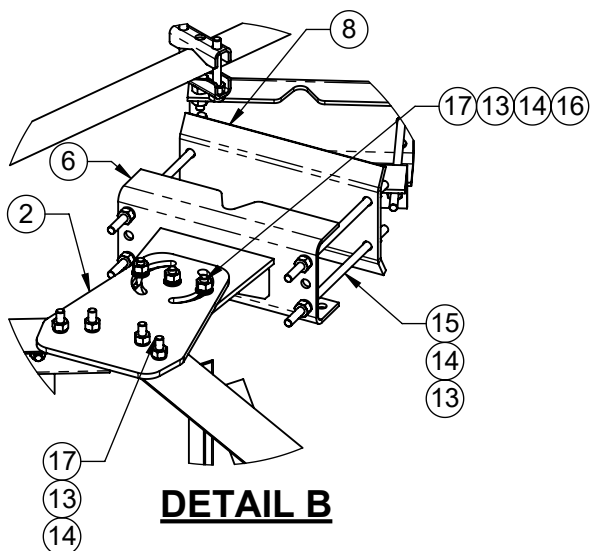
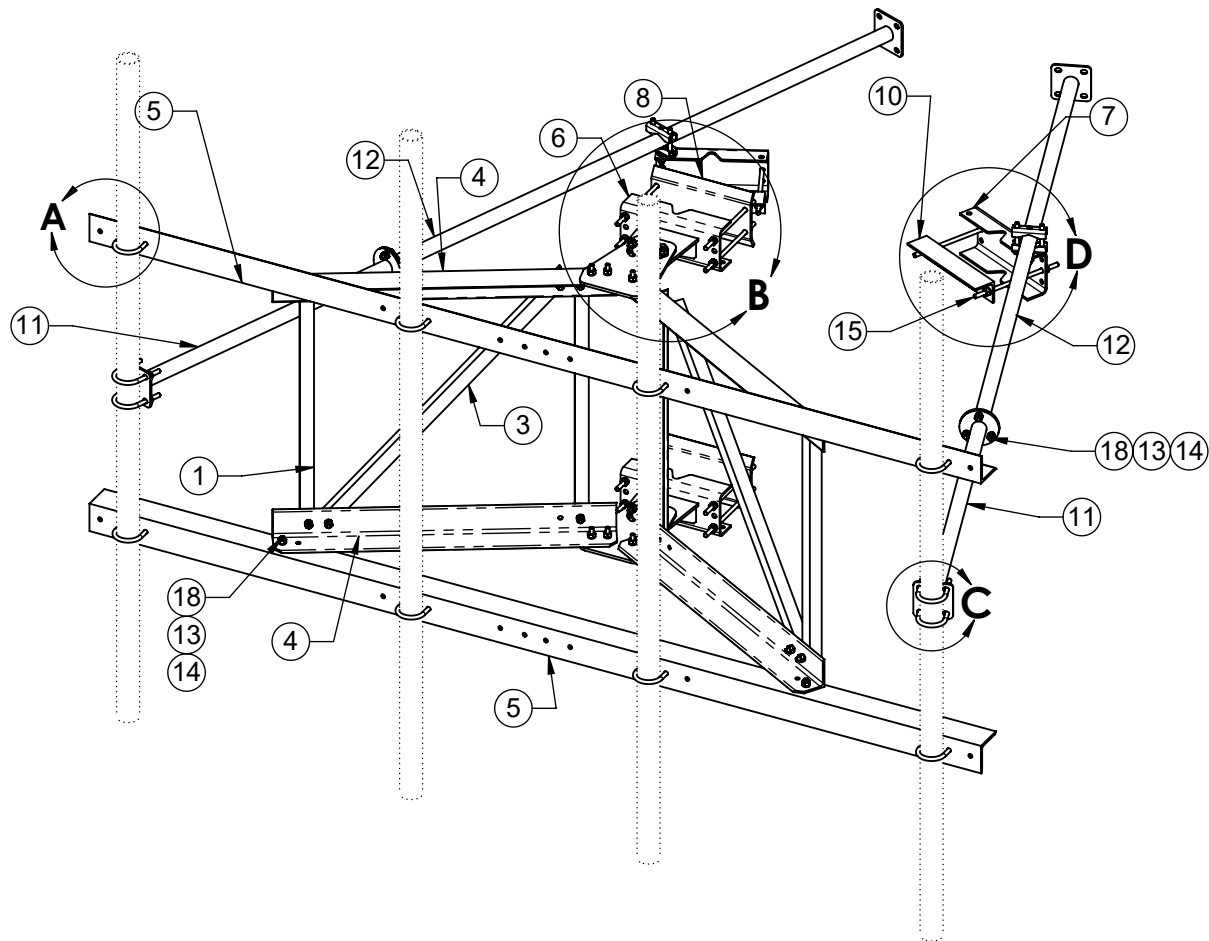
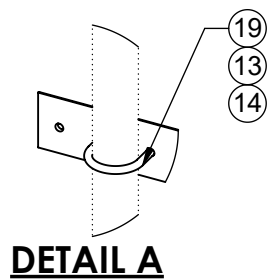


1. ALT FABRICATION MOUNT 2116S-12 IS CLASSIFIED AS M350R(750)-4[6] BASED ON THE TIA-5053 MOUNTING SYSTEM CLASSIFICATION STANDARD.
2. ITEM 20, ANTENNA MOUNT PIPE, TO BE ORDERED SEPARATELY.
NOTE: MUST HAVE A MIN. OF 4 PIPES FOR MOUNT TO MEET LOADING REQUIREMENTS.
3. FULL COMPLEMENT OF ANTENNA MOUNT PIPES SHOWN.
4. ITEM 16, FLAT WASHERS, TO BE INSTALLED AGAINST SLOTS ON ITEMS 2 AND 6.
5. INSTALL THE CENTER PIVOT BOLT/NUT/WASHER ASSEMBLY AT THE TOP AND BOTTOM TOWER LEG BRACKET WITH THE DESIRED TOWER TAPER THEN PARTIALLY TIGHTEN. ROTATE THE SECTOR FRAME TO DESIRED AZIMUTH POSITION. INSTALL OUTER (2) BOLT/NUT/WASHER THROUGH THE CURVED SLOTS IN ITEM 3 AT THE TOP AND BOTTOM.
6. TO ACHIEVE POSTED WIND RATING, FULLY TIGHTEN ALL (6) AZIMUTH PIVOT POINT BOLTS BY TURNING NUTS 1/3 PAST "SNUG TIGHT" CONDITION AS DEFINED BY AISC 9TH EDITION ASD AFTER FINAL AZIMUTH POSITIONING.
7. AZIMUTH ROTATION: ±60° ON CENTER LINE OF TOWER LEG.
8. MAX TOWER LEG SIZE:
 ROUND LEG - 8" OD
 90° ANGLE LEG - 8" X 8"
 60° ANGLE LEG - 11" TIP TO TIP

ITEM NO.	QTY.	PART NO.	DESCRIPTION
1	4	7000-2116R-2-2	VERTICAL, FAN TRUSS, L1-3/4" X 3/16"
2	2	7000-2116R-2-3	TAPER BRACKET
3	2	7000-2116R-2-5	DIAGONAL, FAN TRUSS, L1-3/4" X 3/16"
4	4	7000-2116S-4	CHORD, FAN TRUSS, L4" X 1/4"
5	2	7000-2116S-10	MAIN FACE CHORD, L4" X 5/16"
6	2	7000-2120-TB	WELDMENT, TOWER LEG BRACKET, UNIVERSAL
7	2	7000-2120-TB.1	TAPER BRACKET LEG ADAPTOR
8	2	7000-2120-AA.2	BACKPLATE, ANGLE LEG ADAPTER,
9	2	7000-2120-KD.2	SWAY BAR CLAMP ASSEMBLY
10	2	7000-2120-KD.3	CLAMP ANGLE 1/4" X 3" X 14"
11	2	7000-2120-KD.42	1.9"OD X 42" SWAY BAR WELDMENT
12	2	7000-2120-KD.84	1.9"OD X 84" SWAY BAR WELDMENT
13	86	4650G-BULK	NUT, 1/2" HEX, A563 GALV
14	92	4754G-BULK	WASHER, 1/2" RGLR LOCK, GALV
15	12	4375G-13	1/2" X 13" ALL THREAD
16	12	4750G-BULK	WASHER, 1/2" NARROW, GALV
17	14	4455G	BOLT, 1/2" X 2" LG HEX, A325 GLAV.
18	22	4454G-BULK	1/2" X 1-1/2" A325 GLAV. HEX BOLT
19	12	4499-2G	1/2" GALV U-BOLT FOR 2-7/8"OD
20	4	2126-96	2-7/8" OD X 96" GALV PIPE

THE INFORMATION CONTAINED IN THIS DRAWING IS THE SOLE PROPERTY OF ALT. ANY REPRODUCTION IN PART OR WHOLE WITHOUT THE WRITTEN PERMISSION OF ALT IS PROHIBITED. 10/23/2019	CAD GENERATED DRAWING, DO NOT MANUALLY UPDATE		 800-950-7960 FAX 940-455-2817 www.altfabrication.com sales@altfabrication.com	122 Leesley Lane Argyle, Texas 76226	
	APPROVALS	DATE		TITLE: 10' SECTOR FRAME ROTATABLE	
	DRAWN SF	10/03/19			
	CHECKED			DWG. NO. 2116S-10	
	ENGINEER				
ISSUED		SCALE: NTS	DO NOT SCALE DRAWING	SHEET: 1 OF 3	



THE INFORMATION CONTAINED
IN THIS DRAWING IS THE SOLE
PROPERTY OF ALT. ANY
REPRODUCTION IN PART OR
WHOLE WITHOUT THE WRITTEN
PERMISSION OF ALT IS
PROHIBITED.

10/23/2019



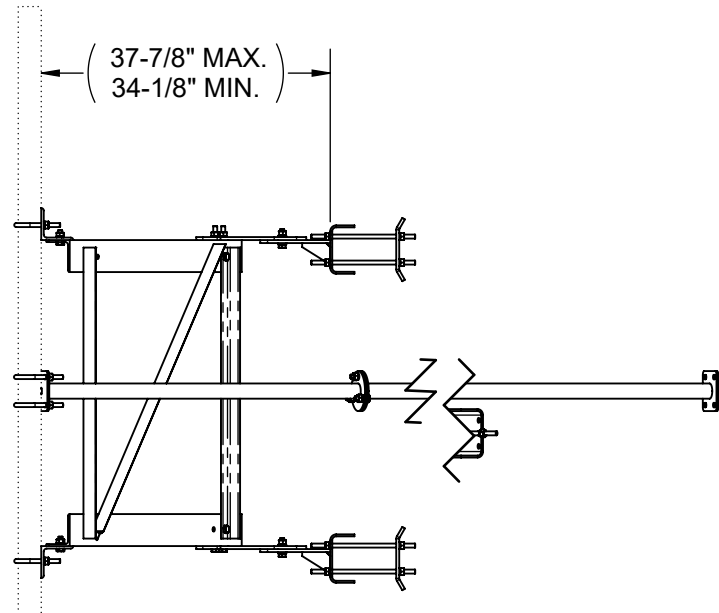
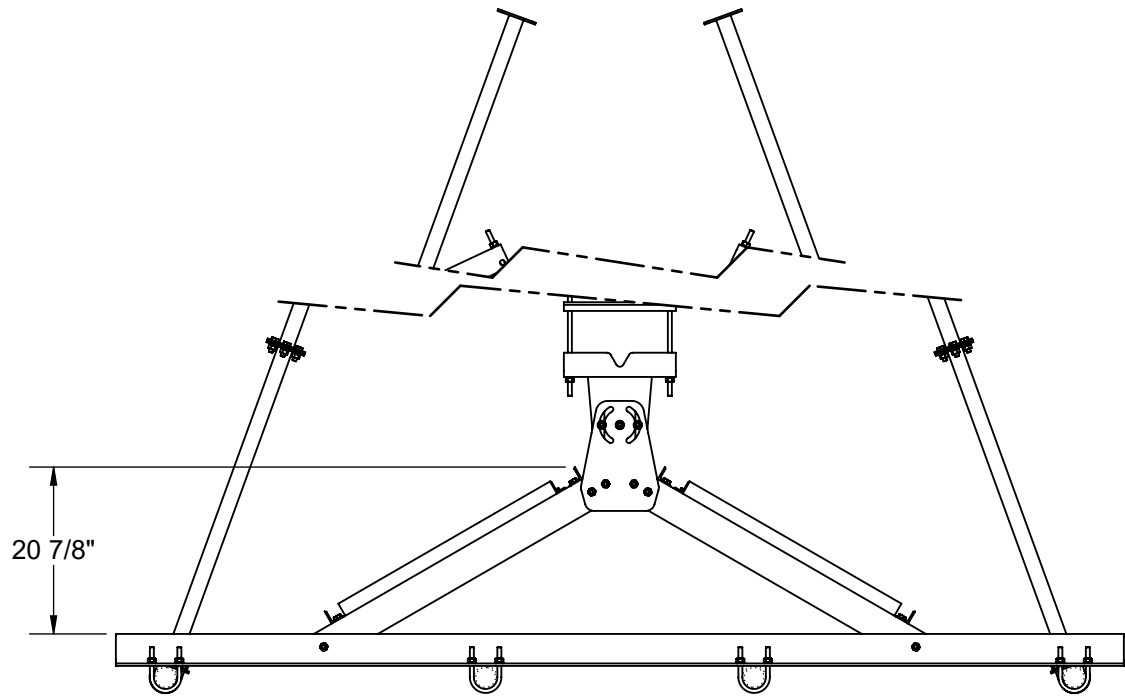
800-950-7960
FAX 940-455-2817
www.altfabrication.com
sales@altfabrication.com

122 Leesley Lane
Argyle, Texas
76226

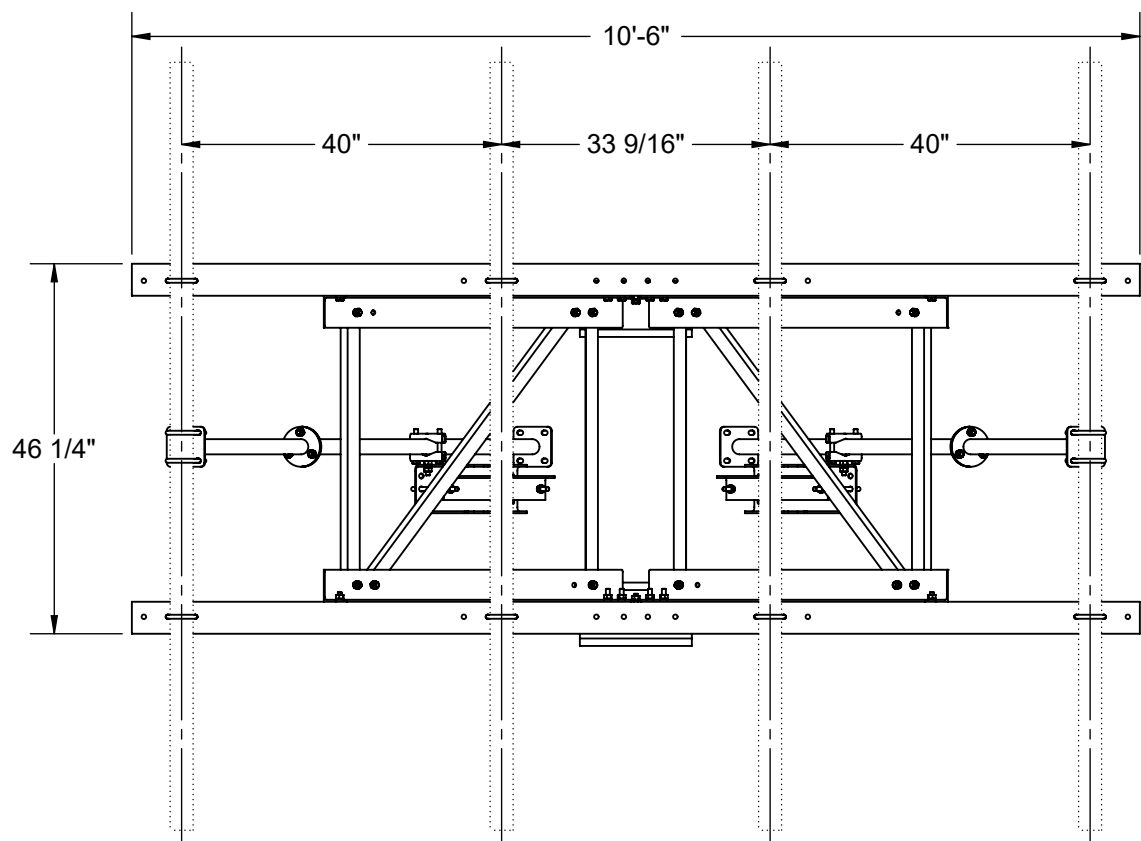
TITLE:
**10' SECTOR FRAME
ROTATABLE**

DWG. NO.
2116S-10

REV.
A



SIDE VIEW



THE INFORMATION CONTAINED
IN THIS DRAWING IS THE SOLE
PROPERTY OF ALT. ANY
REPRODUCTION IN PART OR
WHOLE WITHOUT THE WRITTEN
PERMISSION OF ALT IS
PROHIBITED.

10/23/2019



800-950-7960
FAX 940-455-2817
www.altfabrication.com
sales@altfabrication.com

122 Leesley Lane
Argyle, Texas
76226

TITLE:
**10' SECTOR FRAME
ROTATABLE**

DWG. NO.
2116S-10

REV.
A