

- MAXIMUM MOUNT HEIGHT: 400 ft.
- MAXIMUM ULTIMATE WIND SPEED, NO ICE: 180 mph (3-SECOND GUST)
- MAXIMUM DESIGN WIND SPEED, NO ICE: 140 mph (3-SECOND GUST)
- MAXIMUM DESIGN WIND SPEED, WITH ICE: 60 mph (3-SECOND GUST)
- STRUCTURE CLASS: I or II
- EXPOSURE CATEGORY: B or C
- TOPOGRAPHIC CATEGORY: I
- MAXIMUM DESIGN ICE THICKNESS: 1"
- GUST EFFECT FACTOR, Gh: 1.0
- WIND DIRECTION PROBABILITY FACTOR, Kd: 0.95

1. ALT FABRICATION MOUNT 2116S-10-4-96 IS CLASSIFIED AS M3000R(2700)-4[6] BASED ON THE TIA-5053 MOUNTING SYSTEM CLASSIFICATION STANDARD.

NOTE: MAXIMUM OF 4 PIPES EVENLY SPACED.

2. ITEM 16, FLAT WASHERS, TO BE INSTALLED AGAINST SLOTS ON ITEMS 2 AND 6.


3. INSTALL THE CENTER PIVOT BOLT/NUT/WASHER ASSEMBLY AT THE TOP AND BOTTOM TOWER LEG BRACKET WITH THE DESIRED TOWER TAPER THEN PARTIALLY TIGHTEN. ROTATE THE SECTOR FRAME TO DESIRED AZIMUTH POSITION. INSTALL OUTER (2) BOLT/NUT/WASHER THROUGH THE CURVED SLOTS IN ITEM 3 AT THE TOP AND BOTTOM.

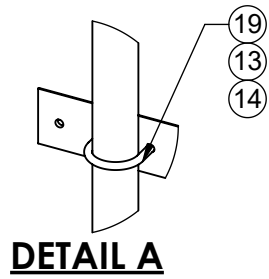
4. TO ACHIEVE POSTED WIND RATING, FULLY TIGHTEN ALL (6) AZIMUTH PIVOT POINT BOLTS BY TURNING NUTS 1/3 PAST "SNUG TIGHT" CONDITION AS DEFINED BY AISC 9TH EDITION ASD AFTER FINAL AZIMUTH POSITIONING.

5. AZIMUTH ROTATION: ±60° ON CENTER LINE OF TOWER LEG.

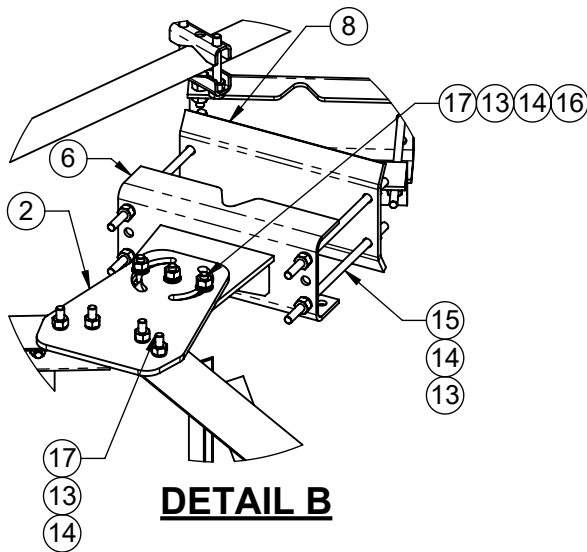
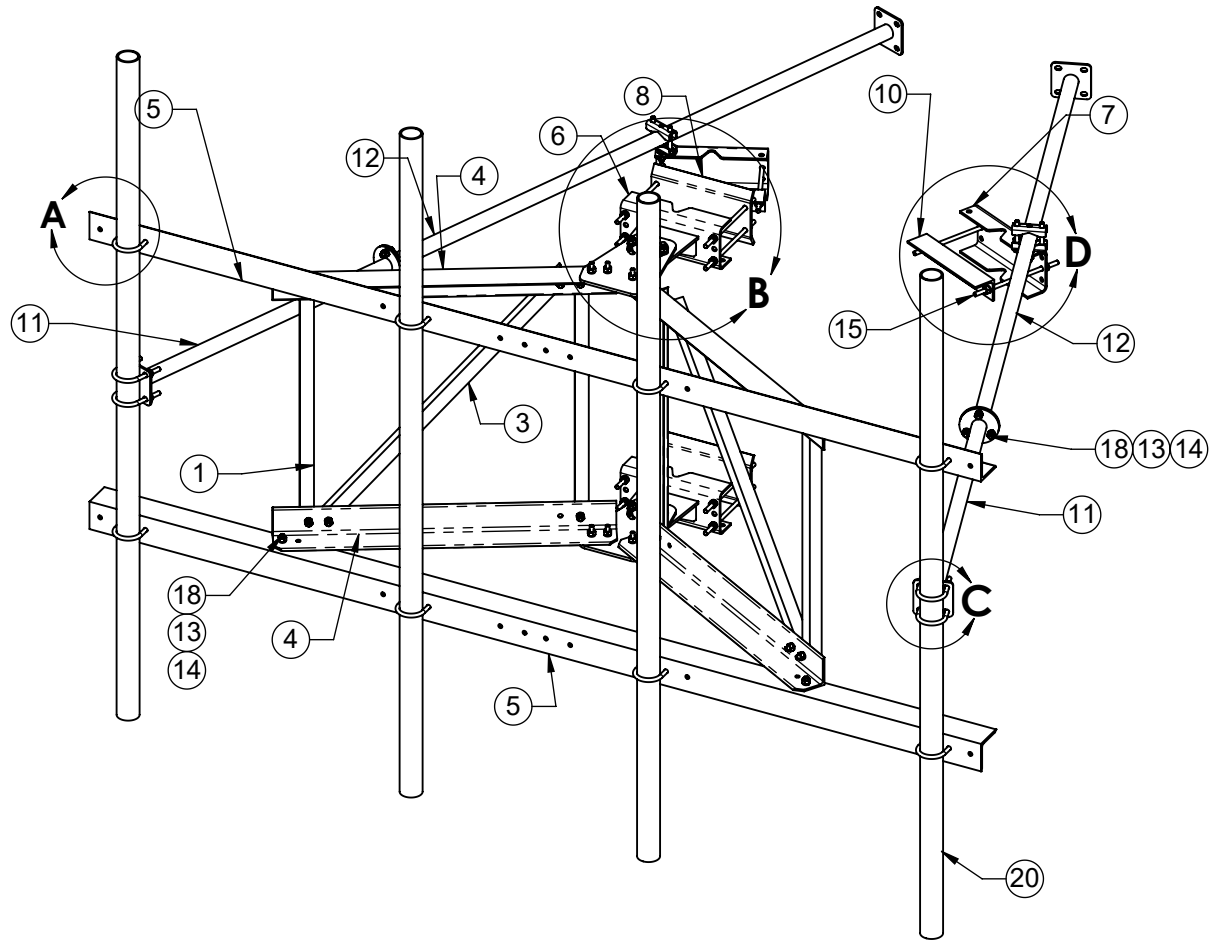
6. MIN. MAX. TOWER LEG SIZE:
 ROUND LEG - 1-1/2" OD TO 8" OD
 90° ANGLE LEG - 2-1/2" X 2-1/2" TO 8" X 8"
 60° ANGLE LEG - 2-1/2" X 2-1/2" TO 11" TIP TO TIP

ITEM NO.	QTY.	PART NO.	DESCRIPTION
1	4	7000-2116R-2-2	VERTICAL, FAN TRUSS, L1-3/4" X 3/16"
2	2	7000-2116R-2-3	TAPER BRACKET
3	2	7000-2116R-2-5	DIAGONAL, FAN TRUSS, L1-3/4" X 3/16"
4	4	7000-2116S-4	CHORD, FAN TRUSS, L4" X 1/4"
5	2	7000-2116S-10	MAIN FACE CHORD, L4" X 5/16"
6	2	7000-2120-TB	WELDMENT, TOWER LEG BRACKET, UNIVERSAL
7	2	7000-2120-TB.1	TAPER BRACKET LEG ADAPTOR
8	2	7000-2120-AA.2	BACKPLATE, ANGLE LEG ADAPTER,
9	2	7000-2120-KD.2	SWAY BAR CLAMP ASSEMBLY
10	2	7000-2120-KD.3	CLAMP ANGLE 1/4" X 3" X 14"
11	2	7000-2120-KD.42	1.9"OD X 42" SWAY BAR WELDMENT
12	2	7000-2120-KD.84	1.9"OD X 84" SWAY BAR WELDMENT
13	86	4650G-BULK	NUT, 1/2" HEX, A563 GALV
14	92	4754G-BULK	WASHER, 1/2" RGLR LOCK, GALV
15	12	4375G-13	1/2" X 13" ALL THREAD
16	12	4750G-BULK	WASHER, 1/2" NARROW, GALV
17	14	4455G	BOLT, 1/2" X 2" LG HEX, A325 GLAV.
18	22	4454G-BULK	1/2" X 1-1/2" A325 GLAV. HEX BOLT
19	12	4499-2G	1/2" GALV U-BOLT FOR 2-7/8"OD
20	4	2126-96	2-7/8" OD X 96" GALV PIPE

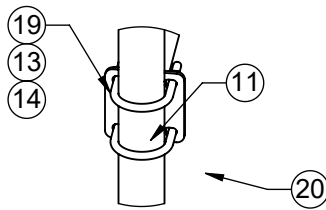
THE INFORMATION CONTAINED IN THIS DRAWING IS THE SOLE PROPERTY OF ALT. ANY REPRODUCTION IN PART OR WHOLE WITHOUT THE WRITTEN PERMISSION OF ALT IS PROHIBITED. 11/5/2019 FINISH: HDG WEIGHT: 707.47	CAD GENERATED DRAWING, DO NOT MANUALLY UPDATE		800-950-7960 FAX 940-455-2817 www.altfabrication.com sales@altfabrication.com	122 Leesley Lane Argyle, Texas 76226	
	APPROVALS: _____ DATE: _____		TITLE: 10' SECTOR FRAME S-SERIES		
	DRAWN: SF 11/05/19	ENGINEER: _____	DWG. NO. 2116S-10-4-96		
	CHECKED: _____	ISSUED: _____	SCALE: NTS DO NOT SCALE DRAWING SHEET: 1 OF 3		REV. A



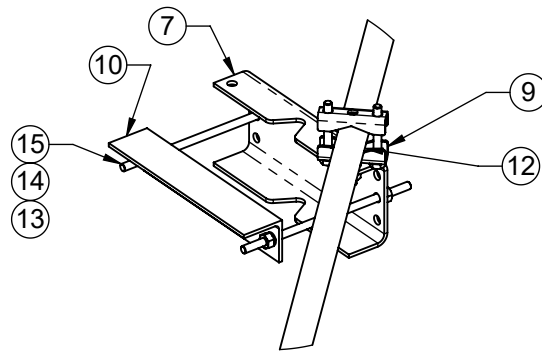
DETAIL A




DETAIL B

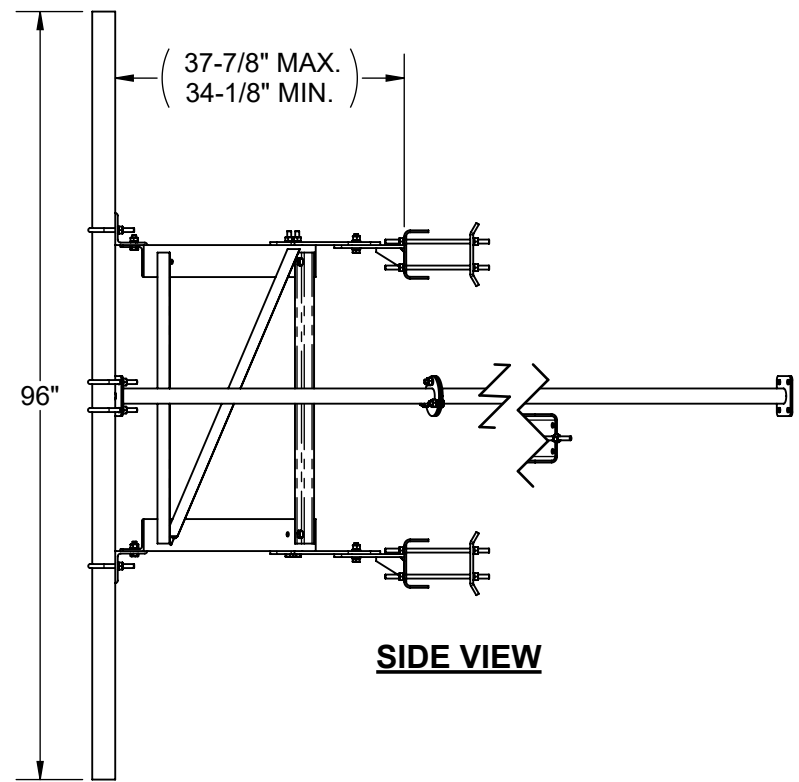
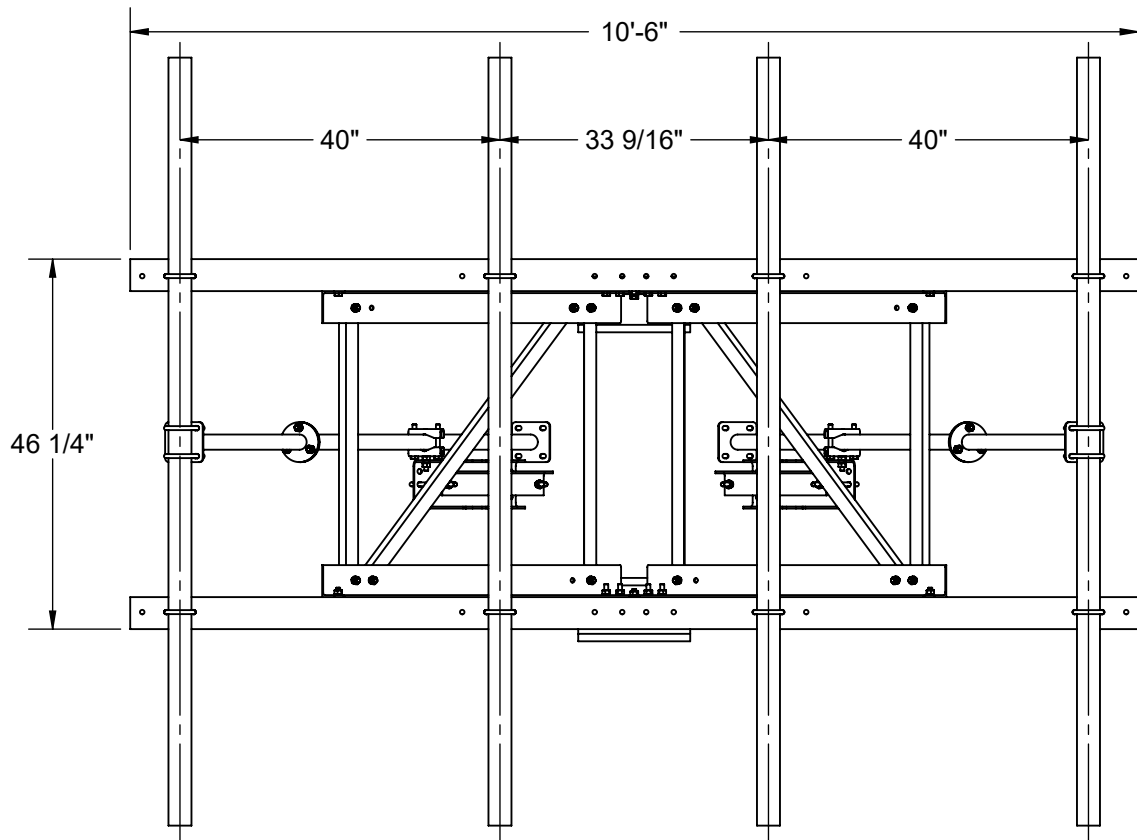
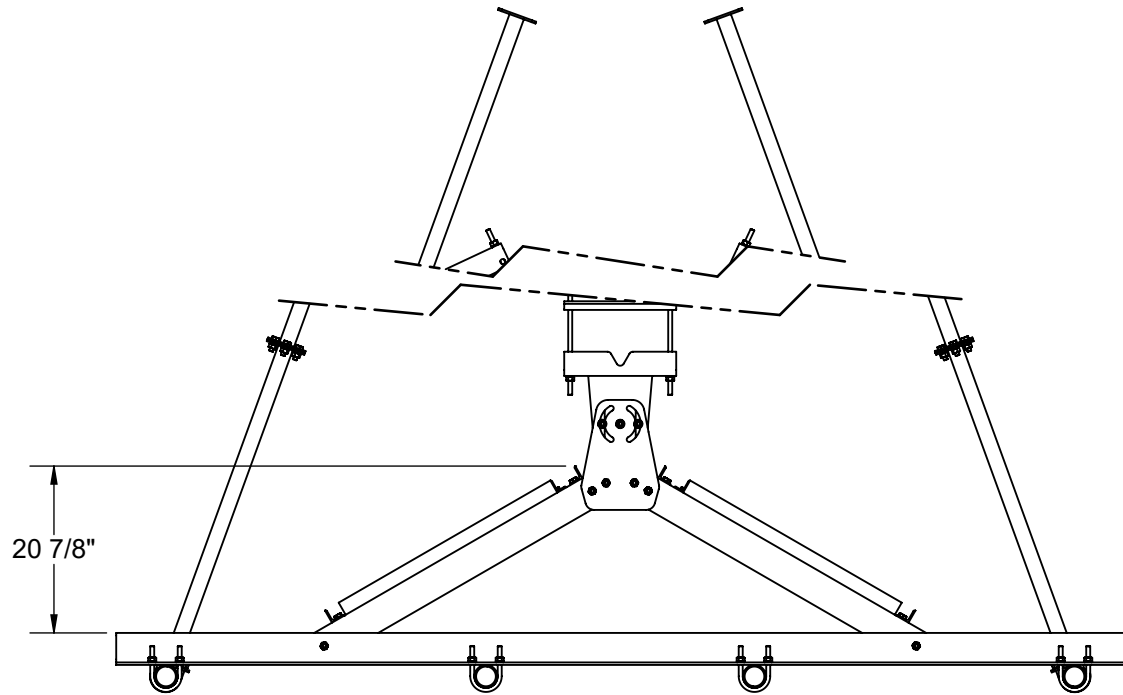


DETAIL C



DETAIL D

<p>THE INFORMATION CONTAINED IN THIS DRAWING IS THE SOLE PROPERTY OF ALT. ANY REPRODUCTION IN PART OR WHOLE WITHOUT THE WRITTEN PERMISSION OF ALT IS PROHIBITED.</p>		 <p>800-950-7960 FAX 940-455-2817 www.altfabrication.com sales@altfabrication.com</p>	<p>122 Leesley Lane Argyle, Texas 76226</p>
<p>11/5/2019</p>			
<p>FINISH: HDG</p>		<p>DWG. NO. 2116S-10-4-96</p>	<p>REV. A</p>
<p>WEIGHT: 707.47</p>	<p>SCALE: NTS</p>	<p>DO NOT SCALE DRAWING</p>	<p>SHEET: 2 OF 3</p>



THE INFORMATION CONTAINED
IN THIS DRAWING IS THE SOLE
PROPERTY OF ALT. ANY
REPRODUCTION IN PART OR
WHOLE WITHOUT THE WRITTEN
PERMISSION OF ALT IS
PROHIBITED.

11/5/2019



800-950-7960
FAX 940-455-2817
www.altfabrication.com
sales@altfabrication.com

122 Leesley Lane
Argyle, Texas
76226

TITLE:

**10' SECTOR FRAME
S-SERIES**

DWG. NO.

2116S-10-4-96

REV.

A