
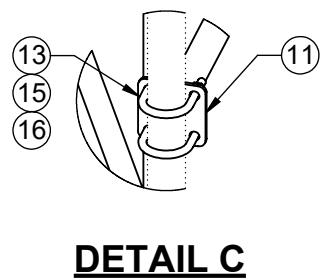
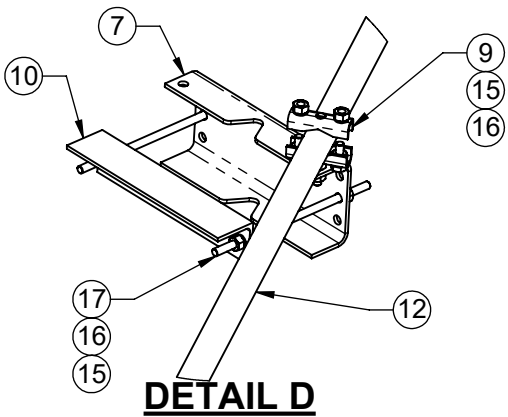
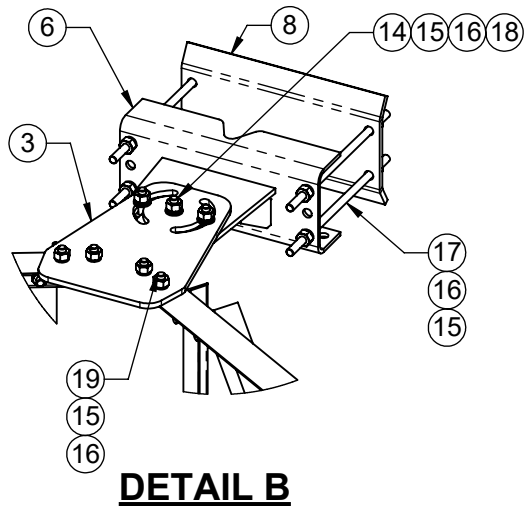
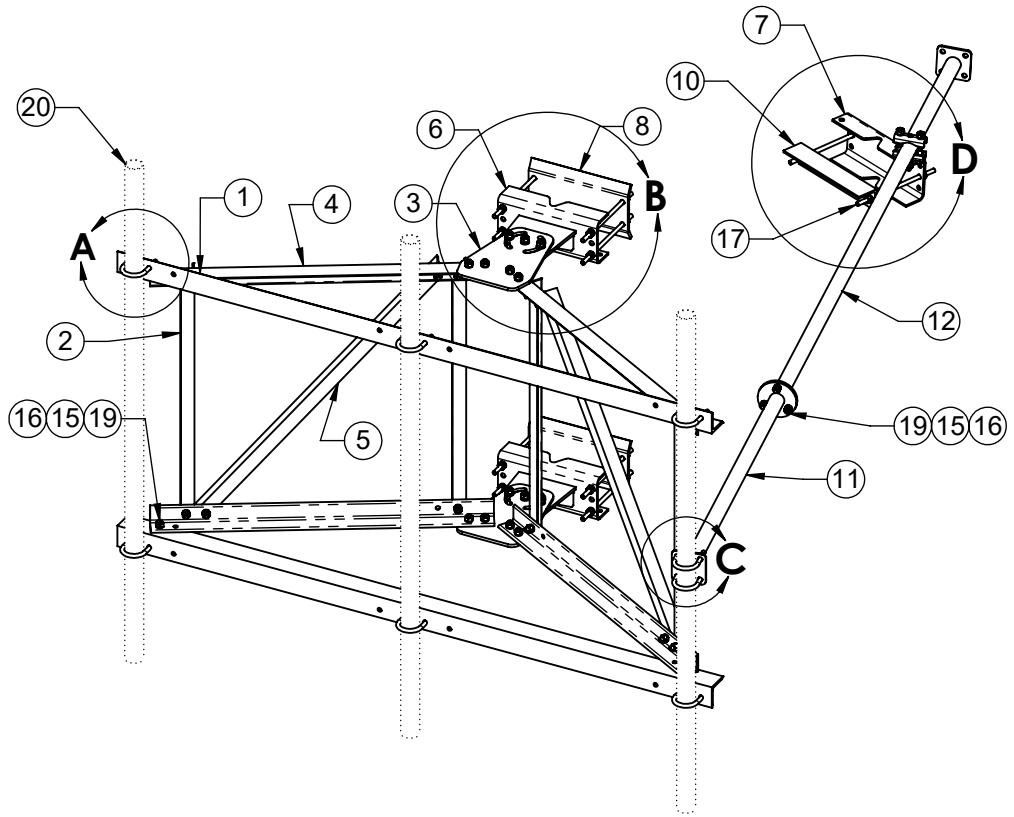
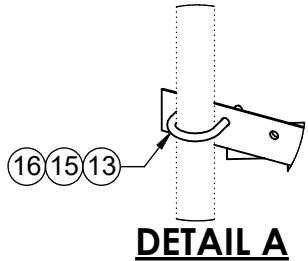


1. WIND RATING: 100 MPH (REV ANSI/TIA-222-G) WITH 3 - 4 SQ FT ANTENNAS INSTALLED.
2. ITEM 19, ANTENNA MOUNT PIPE, TO BE ORDERED SEPERATELY.  
**NOTE:** MUST HAVE A MIN. OF 2 PIPES FOR MOUNT TO MEET LOADING REQUIREMENTS.
3. FULL COMPLEMENT OF ANTENNA MOUNT PIPES SHOWN.
4. ITEM 18, FLAT WASHERS, TO BE INSTALLED AGAINST SLOTS ON ITEMS 3 AND 6.
5. INSTALL THE CENTER PIVOT BOLT/NUT/WASHER ASSEMBLY AT THE TOP AND BOTTOM TOWER LEG BRACKET WITH THE DESIRED TOWER TAPER THEN PARTIALLY TIGHTEN. ROTATE THE SECTOR FRAME TO DESIRED AZIMUTH POSITION. INSTALL OUTER (2) BOLT/NUT/WASHER THROUGH THE CURVED SLOTS IN ITEM 3 AT THE TOP AND BOTTOM.
6. TO ACHIEVE POSTED WIND RATING, FULLY TIGHTEN ALL (6) AZIMUTH PIVOT POINT BOLTS BY TURNING NUTS 1/3 PAST "SNUG TIGHT" CONDITION AS DEFINED BY AISC 9TH EDITION ASD AFTER FINAL AZIMUTH POSITIONING.
7. AZIMUTH ROTATION:  $\pm 60^\circ$  ON CENTER LINE OF TOWER LEG.
8. MAX TOWER LEG SIZE:  
 ROUND LEG - 8" OD  
 90° ANGLE LEG - 8" X 8"  
 60° ANGLE LEG - 11" TIP TO TIP

ITEM NO.	QTY.	PART NO.	DESCRIPTION
1	2	7000-2116R-2-7	MAIN FACE ANGLE, L3" X 5/16"
2	4	7000-2116R-2-2	VERTICAL, FAN TRUSS, L1-3/4" X 3/16"
3	2	7000-2116R-2-3	TAPER BRACKET
4	4	7000-2116R-2-4	CHORD, FAN TRUSS, L2-1/2" X 1/4"
5	2	7000-2116R-2-5	DIAGONAL, FAN TRUSS, L1-3/4" X 3/16"
6	2	7000-2120-TB	WELDMENT, TOWER LEG BRACKET, UNIVERSAL
7	1	7000-2120-TB.1	TAPER BRACKET LEG ADAPTOR
8	2	7000-2120-AA.2	BACKPLATE, ANGLE LEG ADAPTER,
9	1	7000-2120-KD.2	SWAY BAR CLAMP ASSEMBLY
10	1	7000-2120-KD.3	CLAMP ANGLE 1/4" X 3" X 14"
11	1	7000-2120-KD.42	1.9"OD X 42" SWAY BAR WELDMENT
12	1	7000-2120-KD.84	1.9"OD X 84" SWAY BAR WELDMENT
13	8	4499-4G	U-BOLT, 2 3/8" OD PIPE, GALV 1/2" DIA
14	6	4455G	BOLT, 1/2" X 2" LG HEX, A325 GALV.
15	72	4650G-BULK	NUT, 1/2" HEX, A563 GALV
16	78	4754G-BULK	WASHER, 1/2" RGLR LOCK, GALV
17	10	4375G-13	1/2" X 13" ALL THREAD
18	12	4750G-BULK	WASHER, 1/2" NARROW, GALV
19	27	4454G-BULK	BOLT, 1/2" x 1-1/2" LG HEX, A325 GALV.
20	3	2125-XX	2-3/8" OD ANTENNA MOUNT PIPE
21	8	4499-2G	1/2" GALV U-BOLT FOR 2-7/8" OD (NOT SHOWN)

THE INFORMATION CONTAINED IN THIS DRAWING IS THE SOLE PROPERTY OF ALT. ANY REPRODUCTION IN PART OR WHOLE WITHOUT THE WRITTEN PERMISSION OF ALT IS PROHIBITED.  5/18/2018	CAD GENERATED DRAWING, DO NOT MANUALLY UPDATE		 800-950-7960 FAX 940-455-2817 www.altfabrication.com sales@altfabrication.com	122 Leesley Lane Argyle, Texas 76226	
	APPROVALS	DATE		TITLE: <b>7' SECTOR FRAME                  ROTATABLE</b>	
	DRAWN SF	10/27/16			
	CHECKED			DWG. NO. <b>2116R-7</b>	
	ENGINEER				
ISSUED		SCALE: NTS	DO NOT SCALE DRAWING	SHEET: 1 OF 3	



THE INFORMATION CONTAINED  
IN THIS DRAWING IS THE SOLE  
PROPERTY OF ALT. ANY  
REPRODUCTION IN PART OR  
WHOLE WITHOUT THE WRITTEN  
PERMISSION OF ALT IS  
PROHIBITED.

5/18/2018



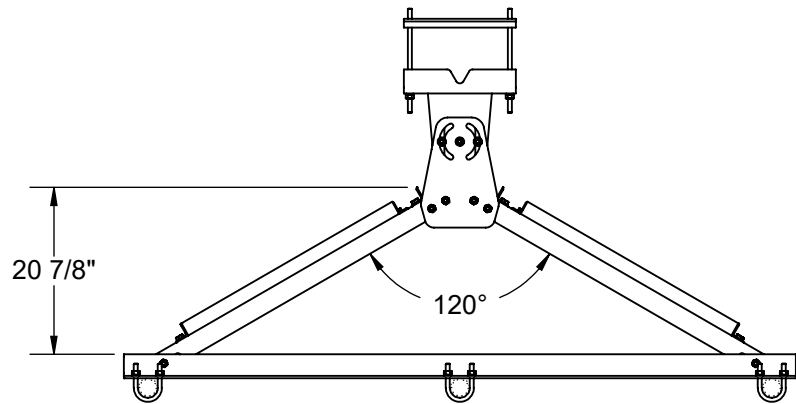
800-950-7960  
FAX 940-455-2817  
www.altfabrication.com  
sales@altfabrication.com

122 Leesley Lane  
Argyle, Texas  
76226

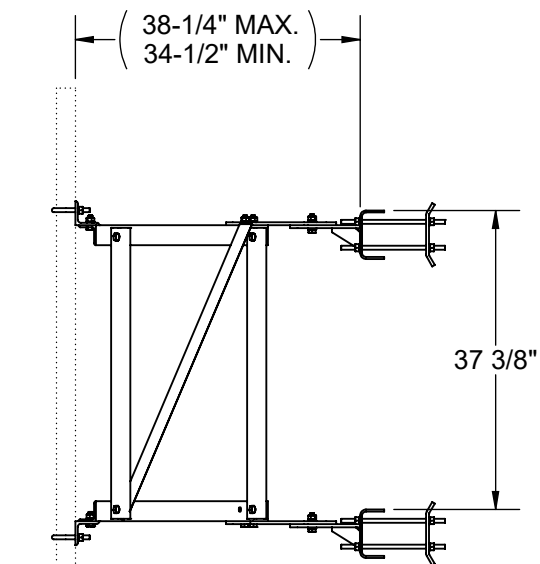
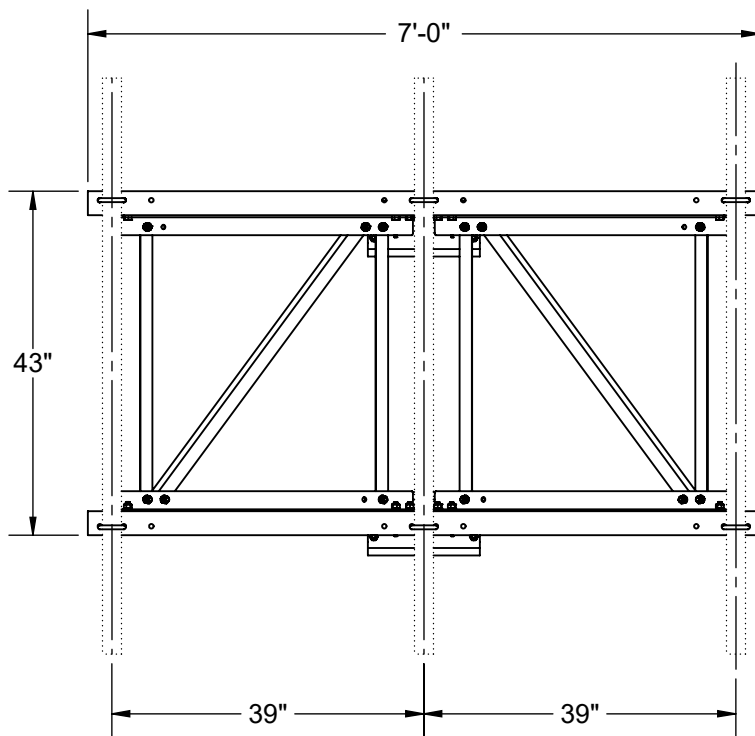
TITLE:  
**7' SECTOR FRAME  
ROTATABLE**

DWG. NO.  
**2116R-7**


REV.  
**C**



**TOP VIEW**  
SWAY BAR REMOVED FOR CLARITY



**SIDE VIEW**  
SWAY BAR REMOVED FOR CLARITY

<p>THE INFORMATION CONTAINED IN THIS DRAWING IS THE SOLE PROPERTY OF ALT. ANY REPRODUCTION IN PART OR WHOLE WITHOUT THE WRITTEN PERMISSION OF ALT IS PROHIBITED.</p> <p>5/18/2018</p>	 <p>800-950-7960 FAX 940-455-2817 www.altfabrication.com sales@altfabrication.com</p>	<p>122 Leesley Lane Argyle, Texas 76226</p>
		<p>TITLE: <b>7' SECTOR FRAME ROTATABLE</b></p>
	<p>FINISH: HDG</p>	<p>DWG. NO. <b>2116R-7</b></p>
<p>WEIGHT: 337</p>	<p>SCALE: NTS</p>	<p>DO NOT SCALE DRAWING</p>
<p>SHEET: 3 OF 3</p>		