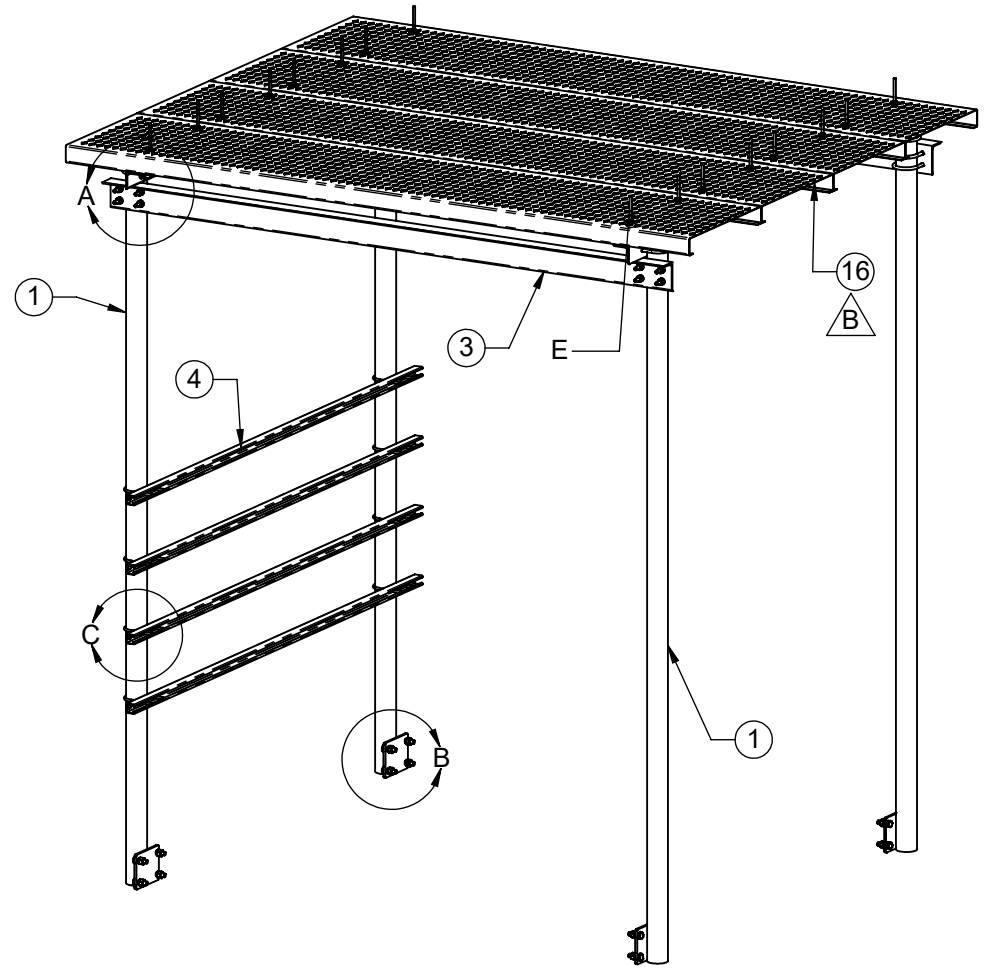
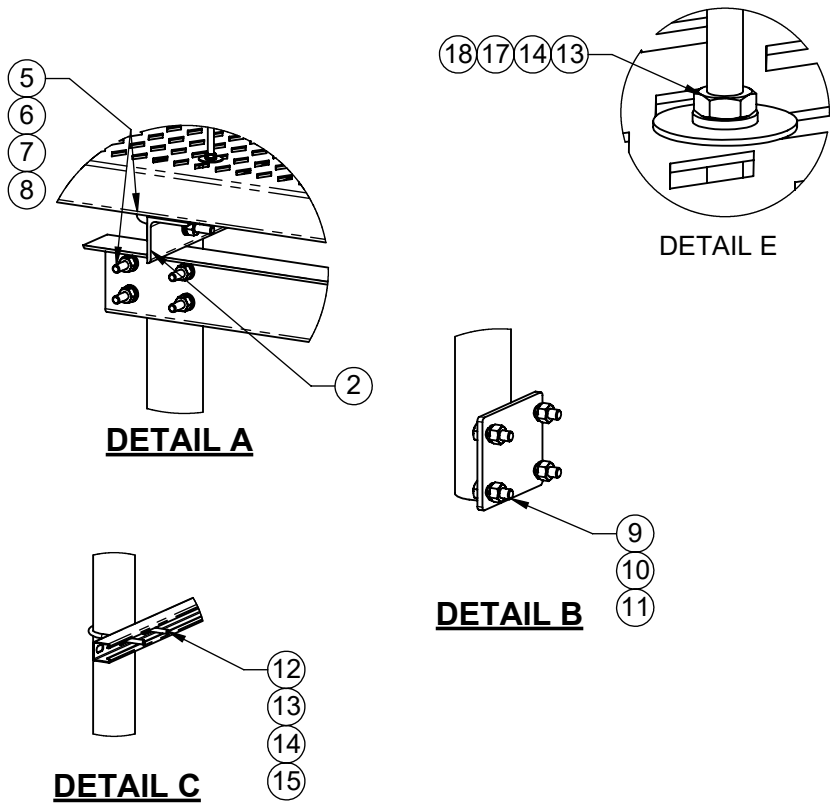


| REVIEWS | | | |
|---------|--|----------|----------|
| REV. | DESCRIPTION | DATE | APPROVED |
| B | INCREASED 2160-24-31012HDG-KIT TO (4) FROM (2) | 11/15/17 | BTM |

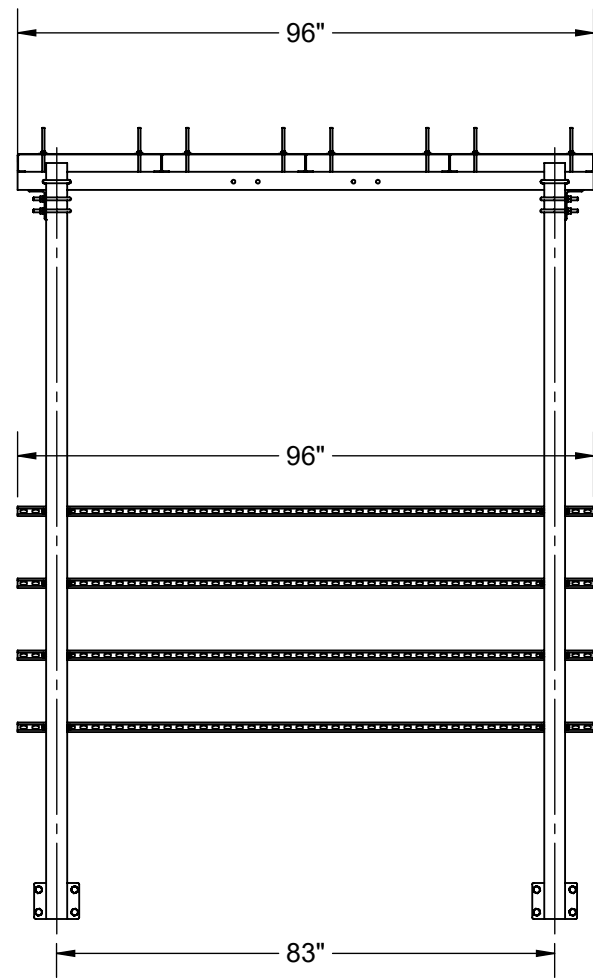
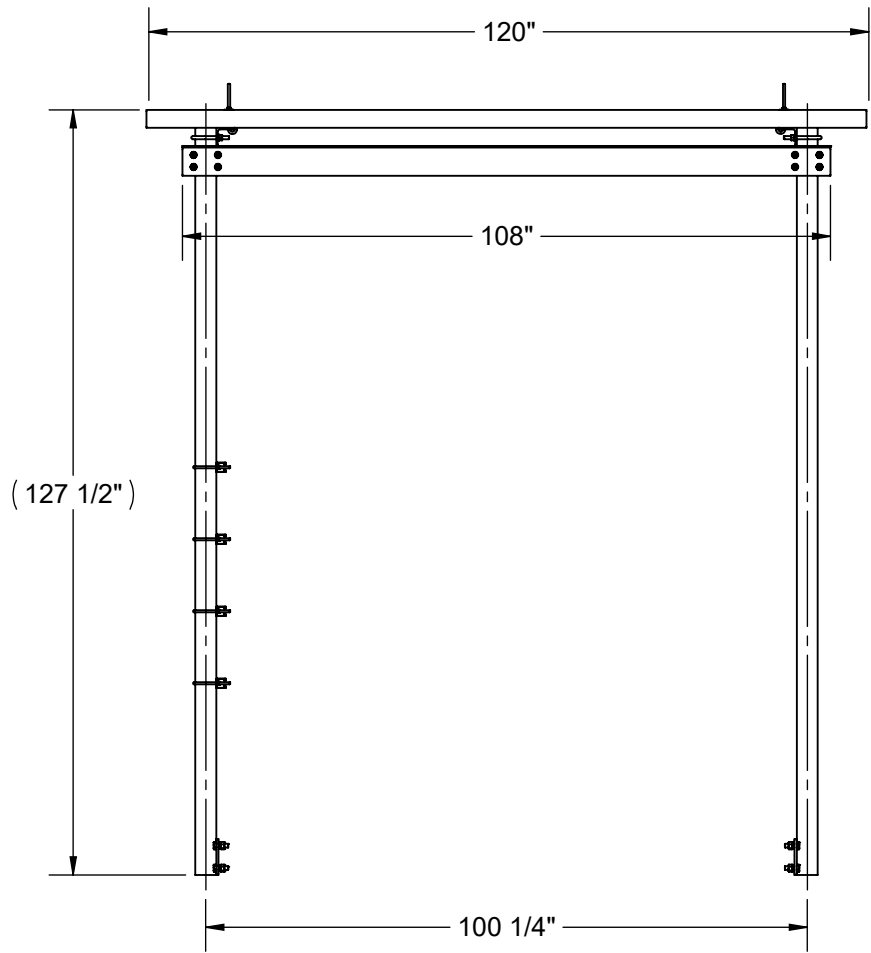
PART NO. 2110JC-88-LIER




1. CANOPY FITS PART# 2110J-88
8' X 8' JACK PLATFORM

| ITEM NO. | QTY. | PART NO. | DESCRIPTION |
|----------|------|------------------|-----------------------------------|
| 1 | 4 | 7000-2110JC-1 | CANOPY LEG |
| 2 | 2 | 7000-2110JC-88-1 | CANOPY SUPPORT ANGLE |
| 3 | 2 | 7000-2110JC-88-2 | CANOPY SUPPORT ANGLE |
| 4 | 4 | 2176-8 | 8' GALV. CHANNEL STRUT, SLOTTED |
| 5 | 12 | 4499G | U-BOLT, 3 1/2" OD PIPE, 1/2" DIA. |
| 6 | 24 | 4650G-BULK | NUT, 1/2" HEX, A563 GALV |
| 7 | 24 | 4754G-BULK | WASHER, 1/2" RGLR LOCK, GALV |
| 8 | 24 | 4750G-BULK | WASHER, 1/2" NARROW, GALV |
| 9 | 16 | 4467G-2 | BOLT, 5/8" X 2" LG HEX, A325 GALV |
| 10 | 16 | 4660G-BULK | 5/8" GALV HEX NUT |
| 11 | 16 | 4764G-BULK | 5/8" GALV LOCK WASHER |
| 12 | 8 | 4477-2G | U-BOLT, 3 1/2" OD PIPE, 3/8" DIA. |
| 13 | 32 | 4620G-BULK | NUT, 3/8" HEX, GALV |
| 14 | 32 | 4724G-BULK | 3/8" LOCK WASHER, GALV |
| 15 | 16 | 4720G-BULK | WASHER, 3/8" NARROW, GALV |
| 16 | 4 | 2160-24-31012HDG | GRIP STRUT, 3" X 24" X 10' LONG |
| 17 | 16 | 4480G | J-BOLT, 3/8" X 8" |
| 18 | 16 | 4720FG-BULK | 3/8" FENDER WASHER |

| | | | | |
|---|--|-----------------------------------|--|--|
| THE INFORMATION CONTAINED IN THIS DRAWING IS THE SOLE PROPERTY OF ALT. ANY REPRODUCTION IN PART OR WHOLE WITHOUT THE WRITTEN PERMISSION OF ALT IS PROHIBITED. 4/9/2018 | CAD GENERATED DRAWING, DO NOT MANUALLY UPDATE | | 800-950-7960 FAX 940-455-2817 www.altfabrication.com sales@altfabrication.com | 122 Leesley Lane Argyle, Texas 76226 |
| | APPROVALS DRAWN SF 11/15/16 CHECKED DMR 11/15/16 ENGINEER | DATE 11/15/16 | | |
| | FINISH: HDG WEIGHT: 957.57 | DWG. NO. 2110JC-88-LIER | REV. B | |
| | SCALE: NTS DO NOT SCALE DRAWING | SHEET: 1 OF 2 | | |



| | | | | | |
|--|--|------|--|---|--------|
| <p>THE INFORMATION CONTAINED IN THIS DRAWING IS THE SOLE PROPERTY OF ALT. ANY REPRODUCTION IN PART OR WHOLE WITHOUT THE WRITTEN PERMISSION OF ALT IS PROHIBITED.</p> <p>4/9/2018</p> | <p>CAD GENERATED DRAWING, DO NOT MANUALLY UPDATE</p> | |  <p>800-950-7960 FAX 940-455-2817 www.altfabrication.com sales@altfabrication.com</p> | <p>122 Leesley Lane Argyle, Texas 76226</p> | |
| | APPROVALS | DATE | | | TITLE: |
| | DRAWN | SF | 11/15/16 | CANOPY KIT FOR 8' X 8' PLATFORM | |
| | CHECKED | DMR | 11/15/16 | DWG. NO. | |
| | ENGINEER | | | 2110JC-88-LIER | |
| ISSUED | | | SCALE: NTS | DO NOT SCALE DRAWING SHEET: 2 OF 2 | |
| FINISH: HDG | WEIGHT: 957.57 | | | REV. B | |