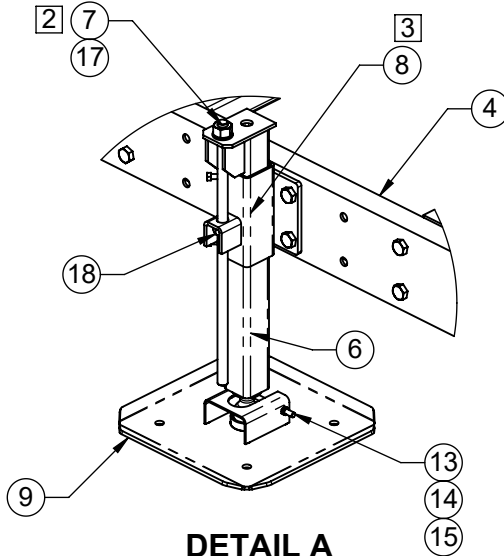
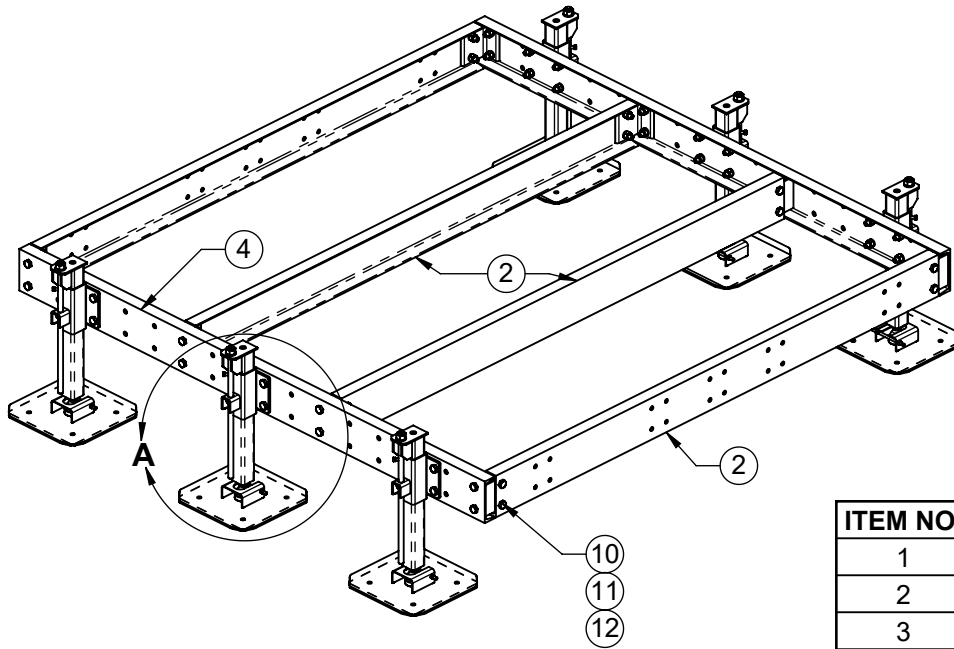


REVISIONS			
REV.	DESCRIPTION	DATE	APPROVED
B	REMOVED CHANNEL WELDMENT / ADDED JACK LEG BRACKET	06/05/18	BTM

1. GRATING AND GRATING CLIPS OMITTED FOR CLARITY
2. LEG LENGTHS ARE ADJUSTED BY TURNING ITEM 7 NUT AFTER ITEM 18 NUT IS INSTALLED
3. INSTALL AND TIGHTEN ITEM 16 SET SCREWS AFTER FINAL LEG ADJUSTMENTS HAVE BEEN MADE.



DETAIL A

ITEM NO.	QTY.	PART NO.	DESCRIPTION
1	2	7000-2110J-88-2	MID CHANNEL
2	2	7000-2110J-88-3	END CHANNEL
3	4	7000-2110J-88-4	1" X 1/8" PLATFORM GRATING 24" X 94-1/2"
4	2	7000-2110J-88-5.1	SIDE CHANNEL
5	8	7000-2110J-15.3	C7 CHANNEL BRACKET
6	6	7000-2110J-1	INNER JACK SLEEVE WELDMENT
7	6	7000-2110J-2	3/4" ALL-THREAD/NUT WELDMENT
8	6	7000-2110J-3	JACK LEG BRACKET
9	6	7000-2110J-JP	JACKPAD WELDMENT (15.5" SQ)
10	56	4467G-2	BOLT, 5/8" X 2" LG HEX, A325 GALV
11	56	4660G-BULK	5/8" GALV HEX NUT
12	56	4764G-BULK	5/8" GALV LOCK WASHER
13	6	4310G-612	3/8" DIA X 6-1/2" LG GALV ALL-THREAD
14	12	4620G-BULK	NUT, 3/8" HEX, GALV
15	6	4724G-BULK	3/8" LOCK WASHER, GALV
16	12	4423G-BULK	BOLT, 3/8" X 1" LG HEX, GALV
17	6	4770G	WASHER, 3/4" NARROW, GALV
18	6	4670G-BULK	NUT, 3/4" HEX, A563 GALV
19	32	2199	GRATING CLIP (NOT SHOWN)

THE INFORMATION CONTAINED IN THIS DRAWING IS THE SOLE PROPERTY OF ALT. ANY REPRODUCTION IN PART OR WHOLE WITHOUT THE WRITTEN PERMISSION OF ALT IS PROHIBITED.

6/5/2018

FINISH: HDG WEIGHT: 1090.7

CAD GENERATED DRAWING, DO NOT MANUALLY UPDATE

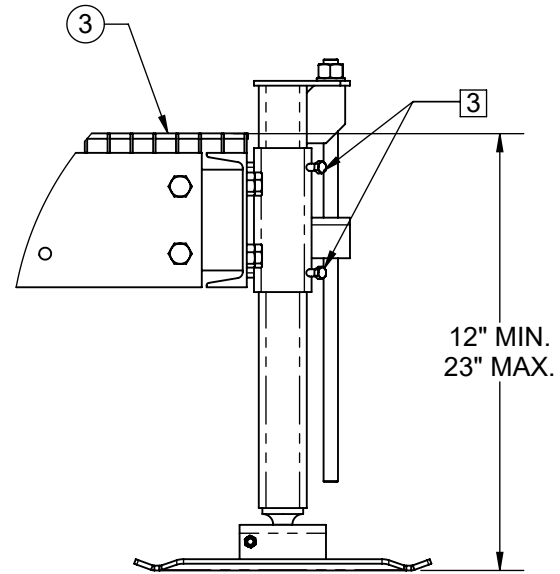
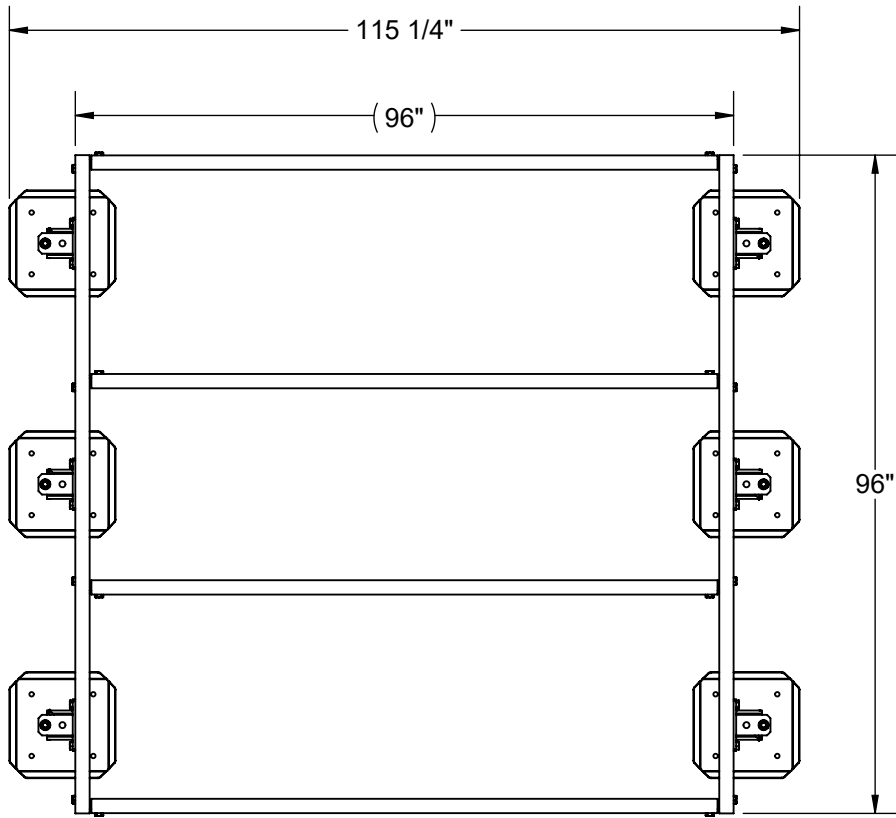
APPROVALS	DATE
DRAWN SF	09/22/16
CHECKED BTM	09/22/16
ENGINEER	
ISSUED	



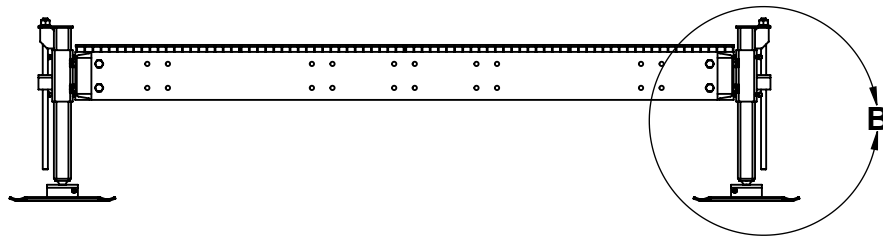
800-950-7960
FAX 940-455-2817
www.altfabrication.com
sales@altfabrication.com


122 Leesley Lane
Argyle, Texas
76226

TITLE:	8' X 8' PLATFORM
DWG. NO.	2110J-88
REV.	B
SCALE: NTS	DO NOT SCALE DRAWING SHEET: 1 OF 2



DETAIL B



<p>THE INFORMATION CONTAINED IN THIS DRAWING IS THE SOLE PROPERTY OF ALT. ANY REPRODUCTION IN PART OR WHOLE WITHOUT THE WRITTEN PERMISSION OF ALT IS PROHIBITED.</p> <p>6/5/2018</p>	CAD GENERATED DRAWING, DO NOT MANUALLY UPDATE		 <p>800-950-7960 FAX 940-455-2817 www.altfabrication.com sales@altfabrication.com</p>	<p>122 Leesley Lane Argyle, Texas 76226</p>	
	APPROVALS	DATE			TITLE:
	DRAWN	SF	09/22/16	8' X 8' PLATFORM	
	CHECKED	BTM	09/22/16	DWG. NO.	
	ENGINEER			2110J-88	
ISSUED			SCALE: NTS	DO NOT SCALE DRAWING	
FINISH: HDG			WEIGHT: 1090.7		SHEET: 2 OF 2
				REV. B	