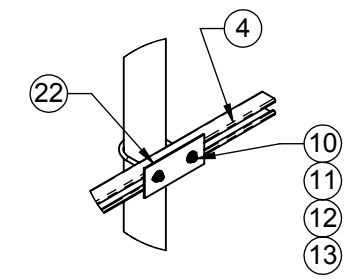
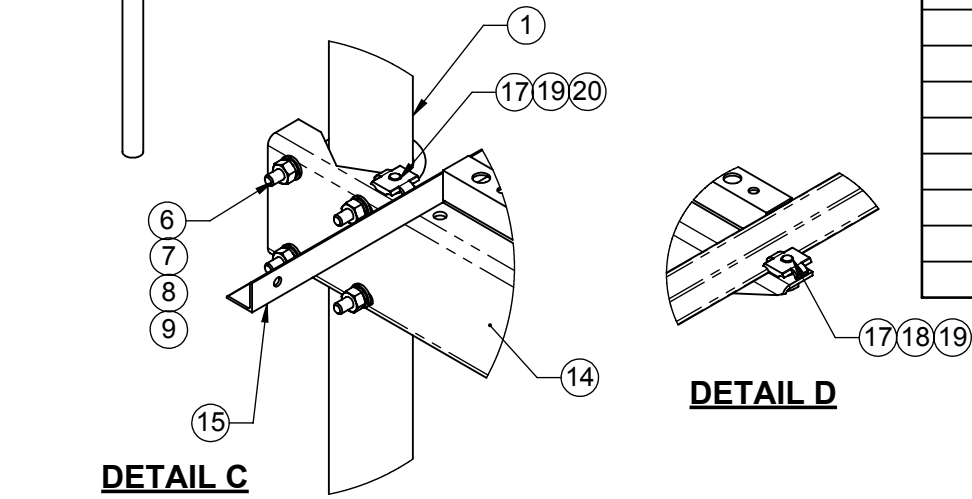


DETAIL A
GRIP STRUTS HIDDEN FOR CLARITY



DETAIL B



DETAIL C

DETAIL D

ITEM NO.	QTY.	PART NO.	DESCRIPTION
1	2	2127-180	3 1/2" X 180" SCHD 40 PIPE
2	2	2160-12-31012HDG	GRIP STRUT, 12" WIDEx3"DEEPx10' LONG
3	1	2160-24-31012HDG	GRIP STRUT, 3" X 24" X 10' LONG
4	3	2176	CHANNEL STRUT, SLOTTED
5	2	5202-3	PIPE CAP, 3 1/2" GALV
6	8	4499G	U-BOLT, 3 1/2" OD PIPE, 1/2" DIA.
7	16	4750G	WASHER, 1/2" NARROW, GALV
8	16	4754G-BULK	WASHER, 1/2" RGLR LOCK, GALV
9	16	4650G	NUT, 1/2" HEX, A563 GALV
10	6	4477-2G	U-BOLT, 3 1/2" OD PIPE, 3/8" DIA.
11	24	4620G-BULK	NUT, 3/8" HEX, GALV
12	12	4720G	WASHER, 3/8" NARROW, GALV
13	24	4724G	3/8" LOCK WASHER, GALV
14	2	7000-2166-1224.3	SUPPORT, HORIZ WAVE GUIDE LADDER
15	1	7000-2101-9W	10', 9 HOLE WELDED WAVEGUIDE LADDER
16	2	7000-2166-1224.2	CANTILEVER BRKT
17	4	4453	BOLT, 1/2" X 1" LG HEX, SST
18	4	4754-BULK	1/2" LOCKWASHER, SS
19	4	7000-A900-3	ALUM PARALLEL CONN. 1/2"-13UNC
20	12	4720FG	3/8" FENDER WASHER
21	12	4480G	J-BOLT, 3/8" X 8"
22	6	7000-2164-NT.1	TRAPEZE CAP PLATE

THE INFORMATION CONTAINED IN THIS DRAWING IS THE SOLE PROPERTY OF ALT. ANY REPRODUCTION IN PART OR WHOLE WITHOUT THE WRITTEN PERMISSION OF ALT IS PROHIBITED.

1/23/2015

FINISH: WEIGHT:

CAD GENERATED DRAWING, DO NOT MANUALLY UPDATE

APPROVALS	DATE
DRAWN CDM	02/17/06
CHECKED JMD	02/21/06
ENGINEER JMD	02/21/06
ISSUED DMR	02/21/06



800-950-7960
FAX 940-455-2817
www.altfabrication.com
sales@altfabrication.com

122 Leesley Lane
Argyle, Texas
76226

TITLE:	ICE BRIDGE/EQUIPMENT RACK KIT, TWO POLE	REV.	E
DWG. NO.		2166-1224	
SCALE: NTS	DO NOT SCALE DRAWING	SHEET: 1 OF 1	