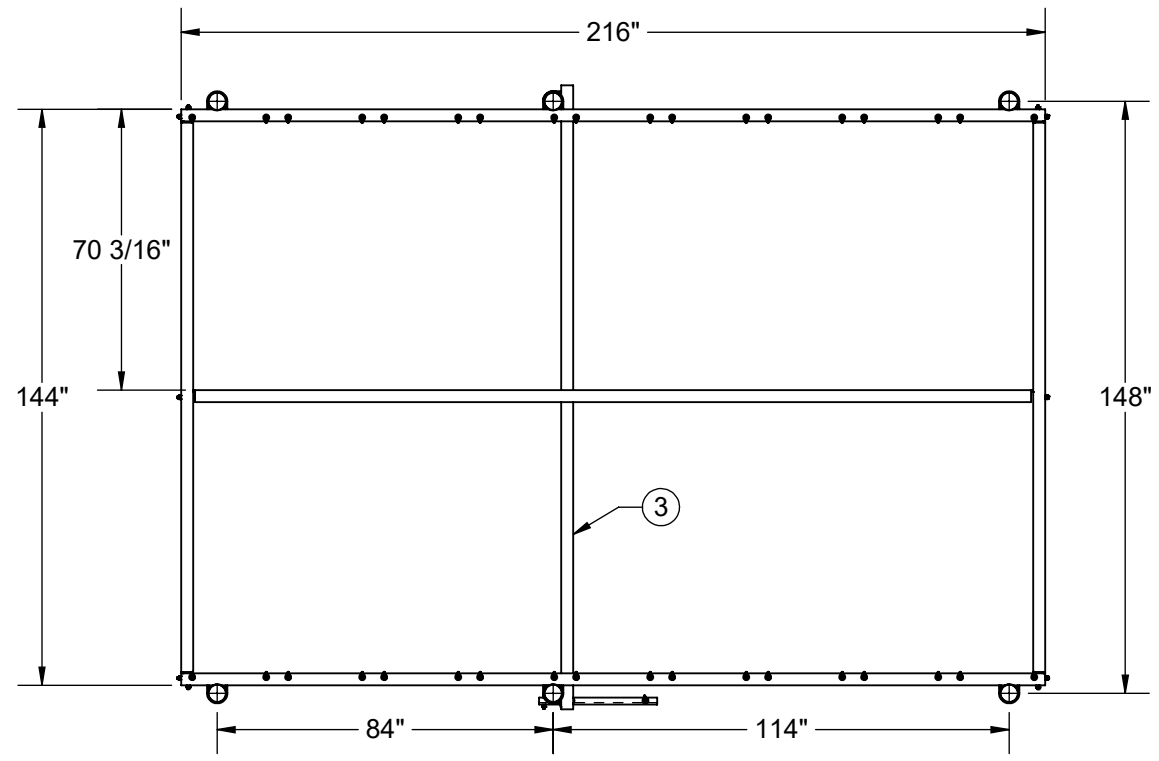
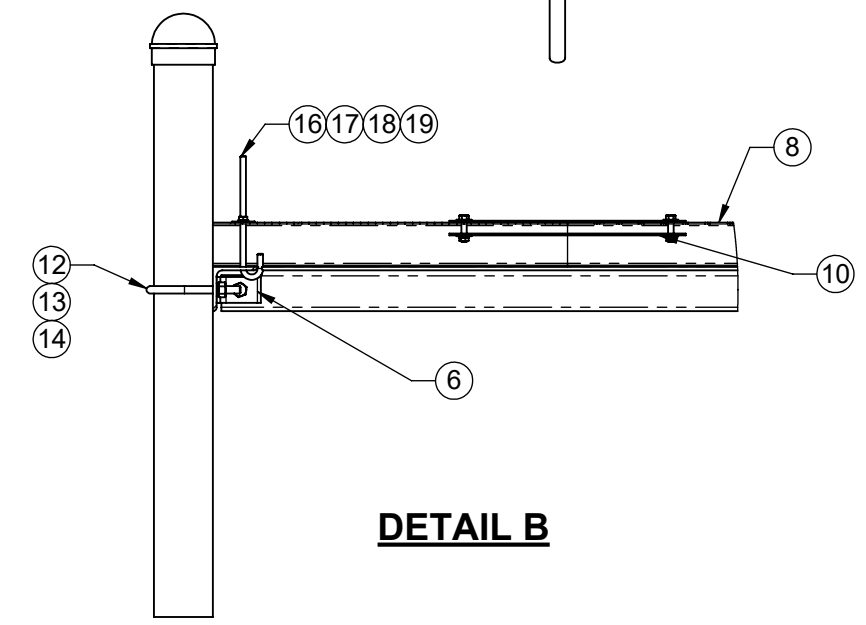
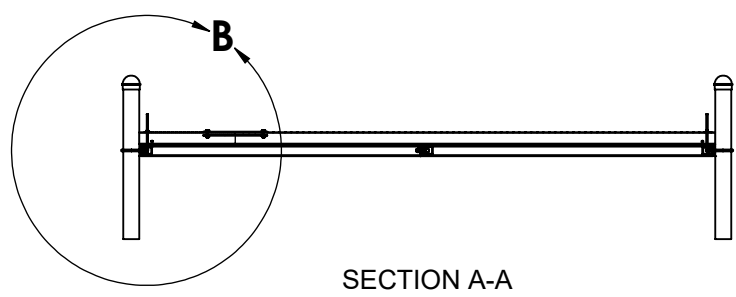
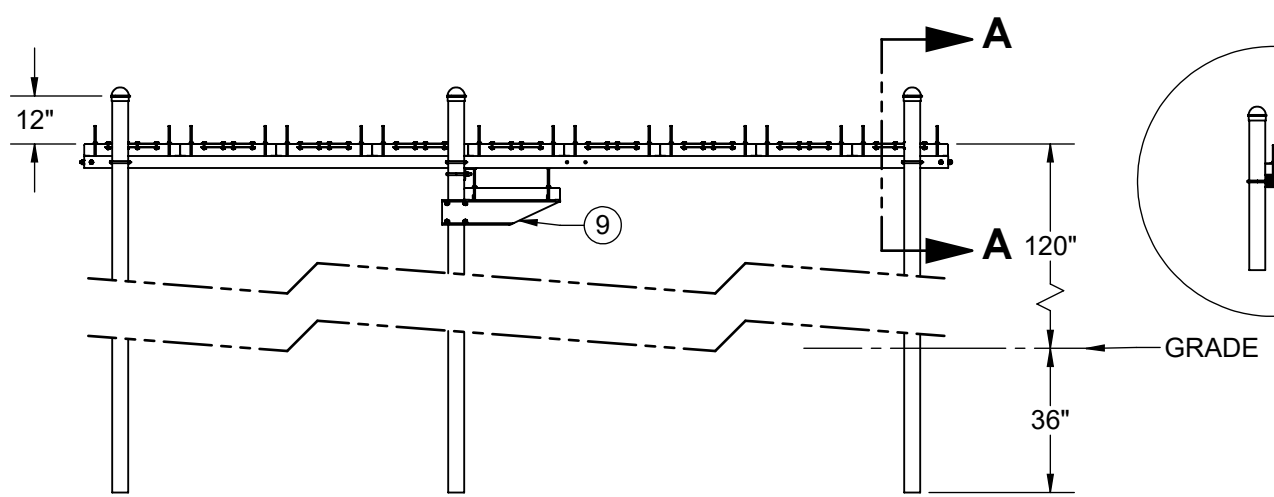
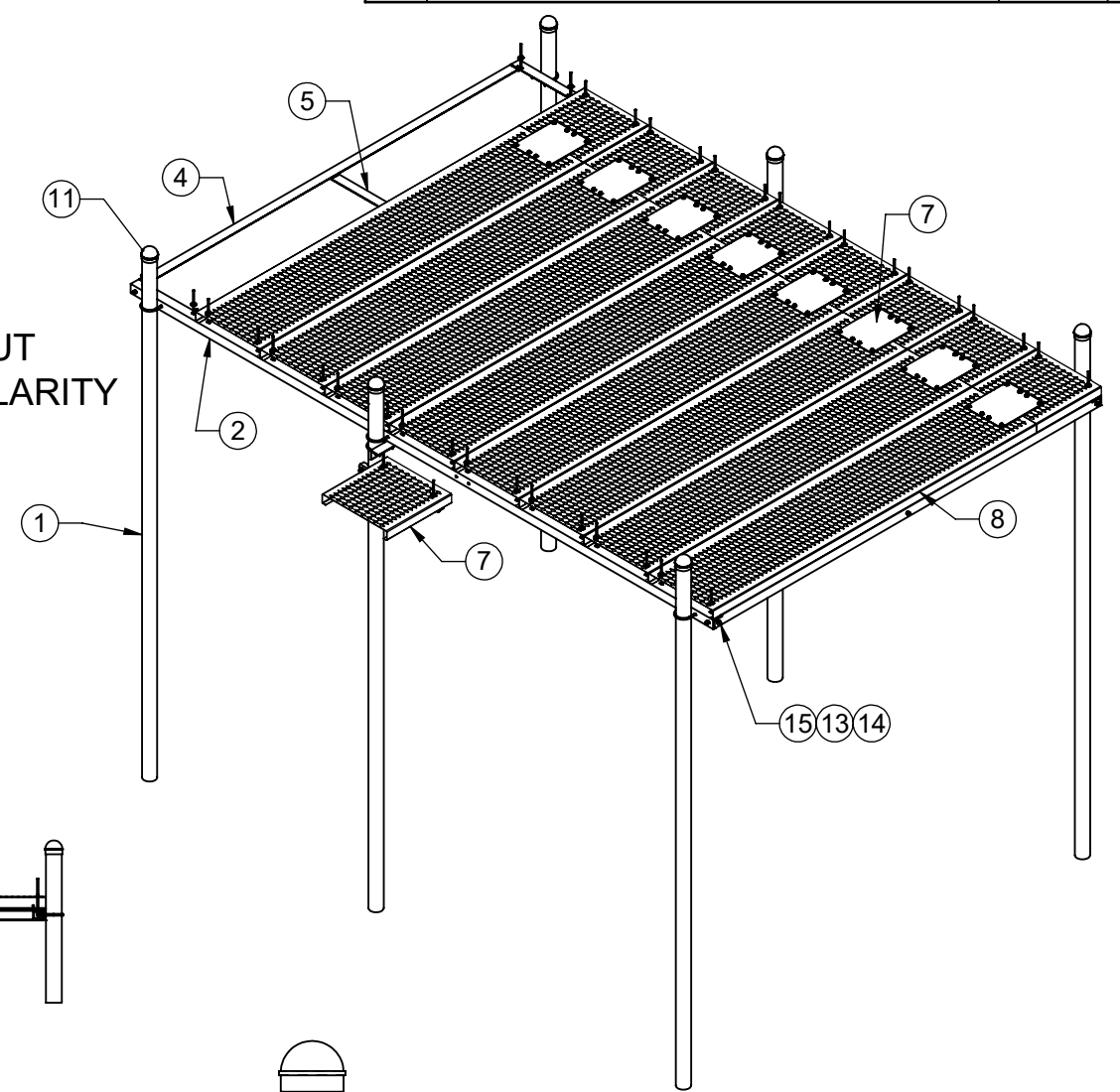


REVISIONS			
REV.	DESCRIPTION	DATE	APPROVED
B	2165-1218-DB-G WAS 2165-1218	09/07/17	BTM





GRIP STRUT HIDDEN FOR CLARITY

ONE GRIP STRUT HIDDEN FOR CLARITY



ITEM NO.	QTY.	PART NO.	DESCRIPTION	MatProd line 2
1	6	2128-168	4"OD X 168" (14') GALVANIZED PIPE	3-1/2"(4"OD) SCH40 STEEL PIPE
2	2	7000-2165-1218-2	FRONT/BACK ANGLE	1/4" X 3" X 3" STEEL ANGLE
3	1	7000-2165-1218-3	MID SPAN SUPPORT	1/4" X 3" X 3" STEEL ANGLE
4	2	7000-2165-1218-4	SIDE ANGLE	1/4" X 3" X 3" STEEL ANGLE
5	1	7000-2165-1218-5	CENTER ANGLE	1/4" X 3" X 3" STEEL ANGLE
6	6	7000-2165-1218-6	CLIP ANGLE	1/4" X 3" X 3" STEEL ANGLE
7	10	2160-24-2	GRIP STRUT, 3" X 24" X 2' LONG	3" X 24" X 10' GRIP STRUT
8	9	2160-24-31012HDG	GRIP STRUT, 3" X 24" X 10' LONG	3" X 24" X 10' GRIP STRUT
9	1	7000-2164C	ICEBRIDGE CANTILEVER SUPPORT	3/16" A36 STEEL PLATE 4' X 10'
10	9	2162-SPLT	ICE BRIDGE SPLICE PLATE KIT	
11	6	5202-3.5	(4"OD) GALVANIZED POST CAP	
12	10	4499-3G	U-BOLT, 4" OD PIPE, GALV 1/2" DIA	
13	32	4650G	NUT, 1/2" HEX, A563 GALV	
14	32	4754G	WASHER, 1/2" RGLR LOCK, GALV	
15	12	4454G	BOLT, 1/2" x 1-1/2" LG HEX, A325 GALV.	
16	38	4480G	J-BOLT, 3/8" X 8"	
17	38	4620G	NUT, 3/8" HEX, GALV	
18	38	4720FG	3/8" FENDER WASHER	
19	38	4724G	3/8" LOCK WASHER, GALV	

FINISH HDG	MATERIAL PROD# SEE B.O.M.	 800-950-7960 FAX 940-455-2817 www.altfabrication.com sales@altfabrication.com		122 Leesley Lane Argyle, Texas 76226
DO NOT SCALE DRAWING	UNLESS OTHERWISE SPECIFIED DIMENSIONS ARE IN INCHES. TOLERANCES ARE:	APPROVALS	DATE	TITLE:
	FRACTIONS DECIMALS ANGLES ± 1/32 .XX ± .XX ± 1° .XXX ± .XXX	DRAWN SF	03/27/13	12' X 18' ICE CANOPY
	9/7/2017	CHECKED DMR	03/27/13	SIZE DWG. NO.
THE INFORMATION CONTAINED IN THIS DRAWING IS THE SOLE PROPERTY OF ALT. ANY REPRODUCTION IN PART OR WHOLE WITHOUT THE WRITTEN PERMISSION OF ALT IS PROHIBITED.		ENGR.		2165-1218-DB-G 
		ISSUED		REV. B
		MANUFACT.		SCALE: NTS WEIGHT 2361.48 SHEET 1 OF 1