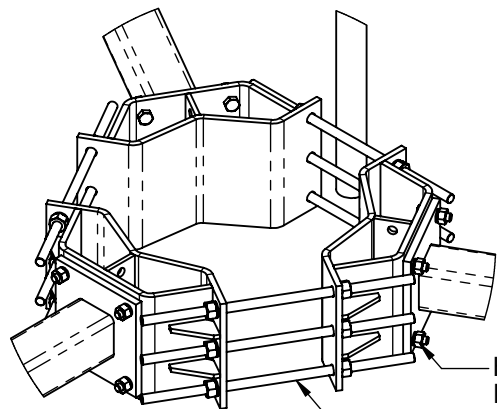


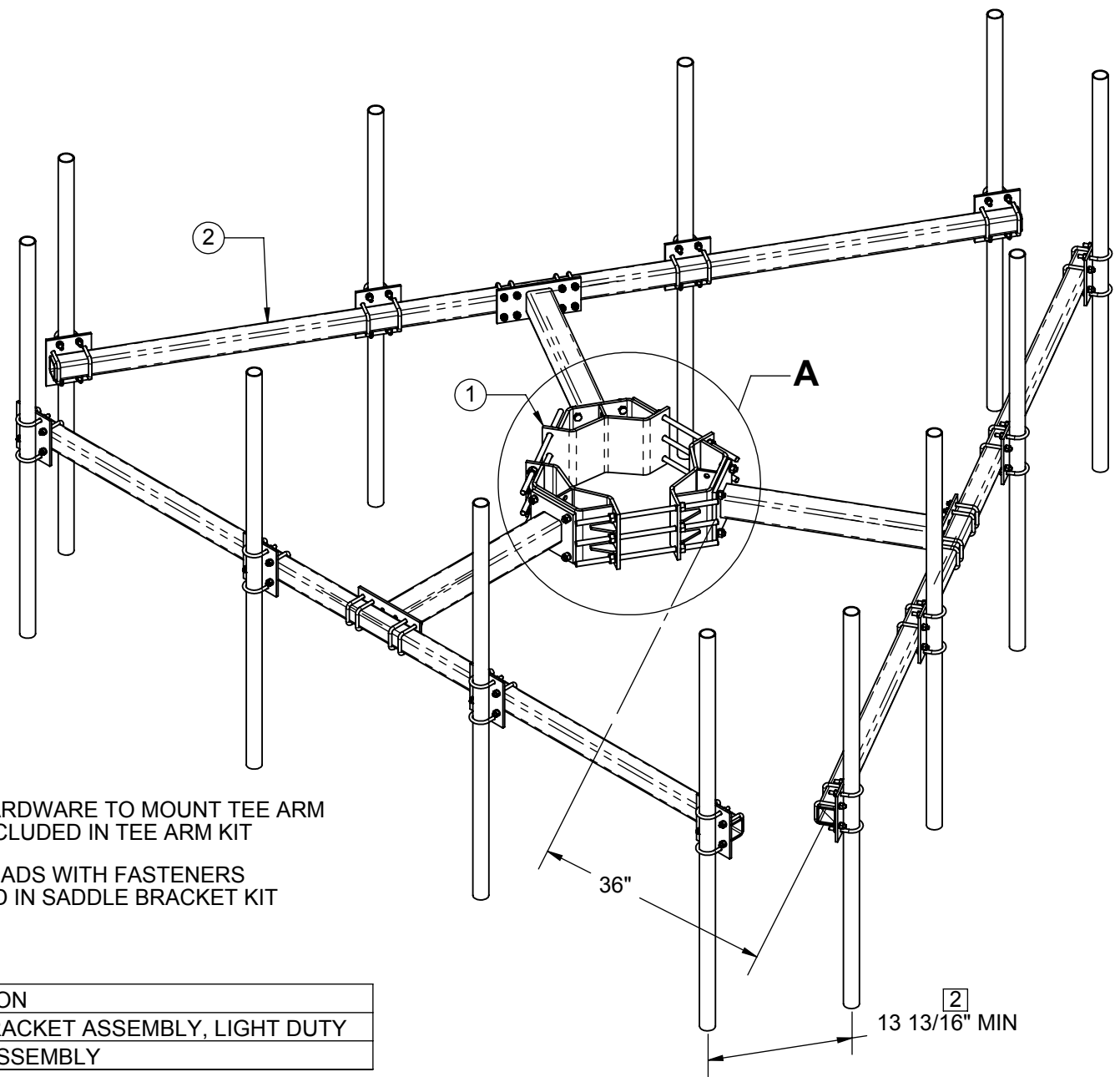
1. WIND RATING: 90mph WITH (12) 4 SQFT ANTENNAS INSTALLED.
- 2 MIN DIM OF 13 13/16" OCCURS WITH THE LARGEST TEE ARM ASSEMBLY (2122-12) ATTACHED TO THE SMALLEST DIA OF MONOPOLE (11" OD).
3. FULL COMPLEMENT OF ANTENNA MOUNT PIPES SHOWN.
- 4 ITEM 1, SADDLE BRACKET ASSEMBLY, TO BE ORDERED SEPARATLY DEPENDING ON THE DIAMETER OF THE MONOPOLE.
- 5 SEE TABLE FOR TEE ARM ASSEMBLY NUMBER PER SIZE.



HARDWARE TO MOUNT TEE ARM INCLUDED IN TEE ARM KIT

ALL THREADS WITH FASTENERS INCLUDED IN SADDLE BRACKET KIT

DETAIL A



ITEM NO.	QTY.	PART NO.	DESCRIPTION
1	1	2121LD-XXXX 4	SADDLE BRACKET ASSEMBLY, LIGHT DUTY
2	3	2122S-X 5	TEE ARM ASSEMBLY

TEE ARM SIZE	TEE ARM NUMBER
8'	2122S-8
10'	2122S-10
12'	2122S-12

THE INFORMATION CONTAINED IN THIS DRAWING IS THE SOLE PROPERTY OF ALT. ANY REPRODUCTION IN PART OR WHOLE WITHOUT THE WRITTEN PERMISSION OF ALT IS PROHIBITED.

11/29/2011

CAD GENERATED DRAWING, DO NOT MANUALLY UPDATE

APPROVALS	DATE
DRAWN CDM	07/29/05
CHECKED JMD	09/07/05
ENGINEER JMD	09/07/05
ISSUED DMR	10/06/05



800-950-7960
FAX 940-455-2817
www.altfabrication.com
sales@altfabrication.com

122 Leesley Lane
Argyle, Texas
76226

TEE ARM INSTALATION 11" TO 47" DIA MONOPOLE

DWG. NO.	2122S-I	REV.	A
SCALE: NTS	DO NOT SCALE DRAWING	SHEET 1 OF 1	

PART NO. 2122S-I