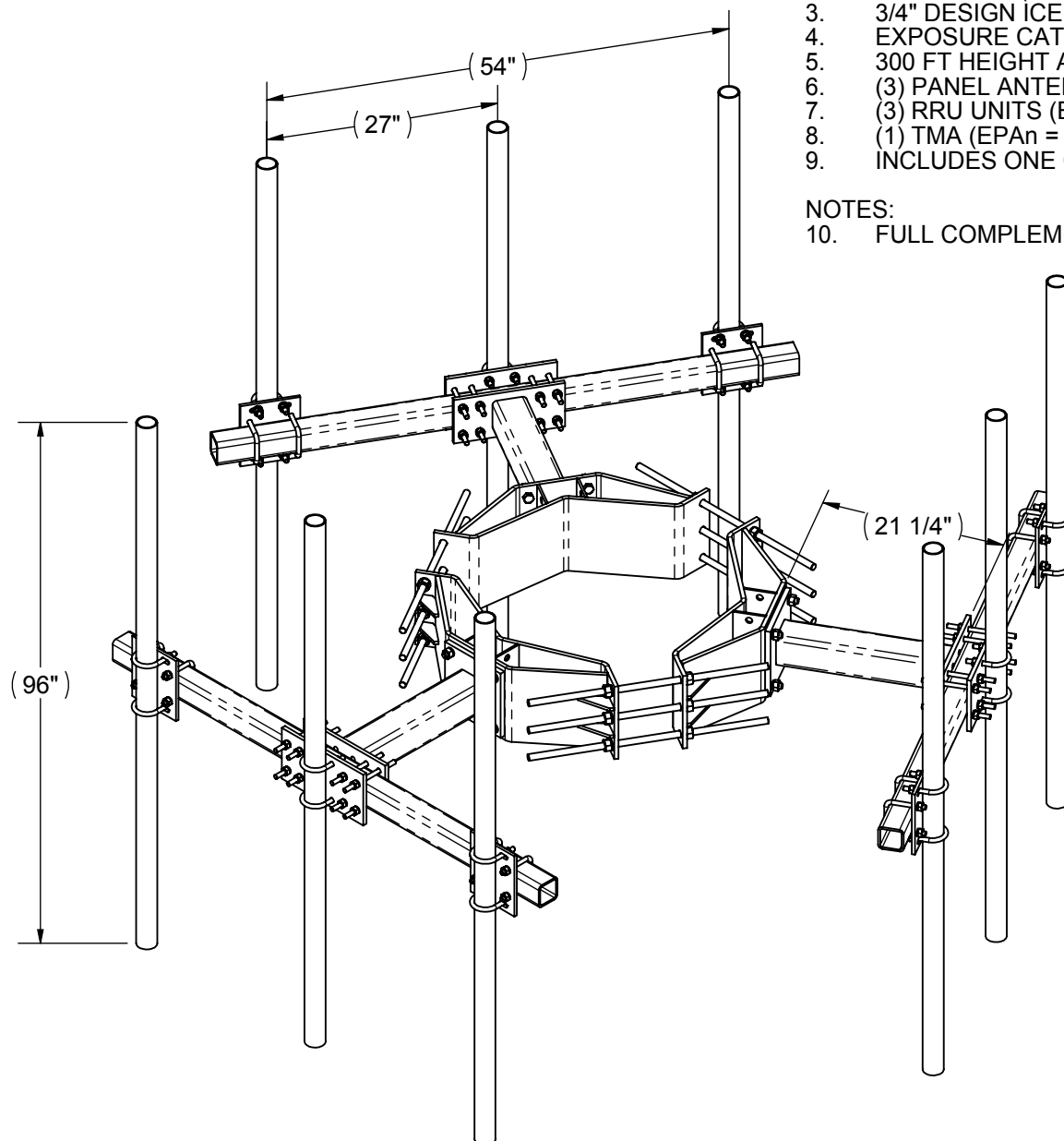


LOADING: ANSI/TIA-222-G

1. VO = 110 MPH (3 SECOND) BASIC WIND SPEED WITHOUT ICE
2. VI = 40 MPH (3 SECOND) BASIC WIND LOAD SPEED WITH ICE
3. 3/4" DESIGN ICE THICKNESS
4. EXPOSURE CAT. = C. STRUCTURE CLASS = II
5. 300 FT HEIGHT ABOVE GROUND ELEVATION OF MOUNT
6. (3) PANEL ANTENNA'S (EPAn = 9.25 SQFT., EPAs = 3.1 SQFT., 70 LBS EACH)
7. (3) RRU UNITS (EPAn = 2.3 SQ FT., EPAs = 1.2 SQFT., 65 LBS EACH)
8. (1) TMA (EPAn = 1.2 SQFT., EPAs = 0.6 SQFT., 25LBS)
9. INCLUDES ONE CONCENTRATED FORCE OF 250LBS

NOTES:


10. FULL COMPLEMENT OF PIPES SHOWN



SADDLE BRACKET PART NUMBERS:

1. 2121LD-1130 11" TO 30" LD SADDLE BRACKET
2. 2121LD-2447 24" TO 47" LD SADDLE BRACKET
3. 2121LD-4460 44" TO 60" LD SADDLE BRACKET

ITEM NO.	QTY.	PART NO.	DESCRIPTION
1	1	2121LD-XXXX	LD SADDLE BRACKET
2	3	2122S-5	5' MONOPOLE SQ. TUBE T-ARM
3	9	2125-96	2-3/8" OD X96" GALV PIPE

THE INFORMATION CONTAINED IN THIS DRAWING IS THE SOLE PROPERTY OF ALT. ANY REPRODUCTION IN PART OR WHOLE WITHOUT THE WRITTEN PERMISSION OF ALT IS PROHIBITED. 10/31/2014		CAD GENERATED DRAWING, DO NOT MANUALLY UPDATE		 800-950-7960 FAX 940-455-2817 www.altfabrication.com sales@altfabrication.com	122 Leesley Lane Argyle, Texas 76226
		APPROVALS	DATE		
		DRAWN	TU 06/09/14		
		CHECKED			
		ENGINEER			
FINISH: NONE		WEIGHT: N/A		TITLE: 2122S-5 WITH 2121LD DWG. NO. 2122S-5-XXXX-996	REV. A
ISSUED				SCALE: NTS	
				DO NOT SCALE DRAWING	
				SHEET: 1 OF 1	