

8 7 6 5 4 3 2 1

D

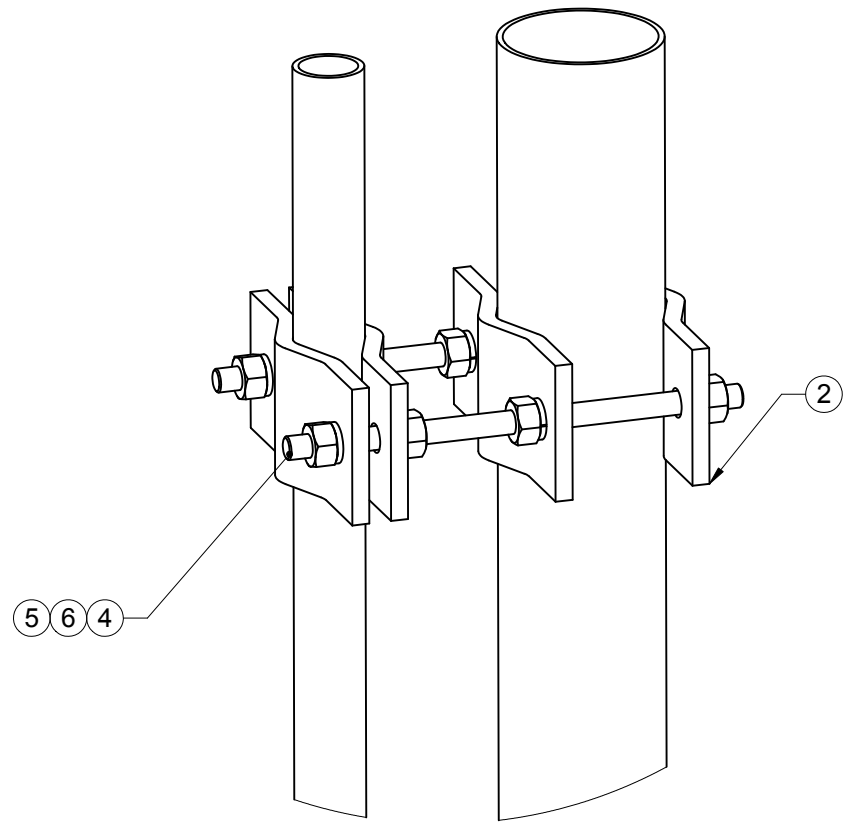
C

B

A

PART NO. 2119-1

- 1. PIPES TO BE ORDERED SEPERATELY.
- 2. CLAMPS WILL ACCOMIDATE PIPE SIZES FROM 1-1/2 " TO 3-1/2" OD.




ITEM NO.	QTY.	PART NO.	DESCRIPTION
2	4	7000-2119-1	PIPE TO PIPE CLAMP, 1-1/2" TO 3-1/2" OD PIPE
4	2	4375G-10	ALL THREAD, 1/2" X 10" LG, GALV
5	8	4754G	WASHER, 1/2" RGLR LOCK, GALV
6	8	4650G	NUT, 1/2" HEX, A563 GALV

THE INFORMATION CONTAINED IN THIS DRAWING IS THE SOLE PROPERTY OF ALT. ANY REPRODUCTION IN PART OR WHOLE WITHOUT THE WRITTEN PERMISSION OF ALT IS PROHIBITED.

2/2/2006

CAD GENERATED DRAWING, DO NOT MANUALLY UPDATE

APPROVALS	DATE
DRAWN JMD	07/13/01
CHECKED CDM	07/13/01
ENGINEER JMD	07/13/01
ISSUED	



800-950-7960
FAX 940-455-2817
www.altfabrication.com
sales@altfabrication.com

122 Leesley Lane
Argyle, Texas
76226

PIPE TO PIPE CLAMP ASSEM
1-1/2" TO 3-1/2" OD PIPES

DWG. NO. 2119-1

SCALE: NTS DO NOT SCALE DRAWING SHEET 1 OF 1

REV. A