
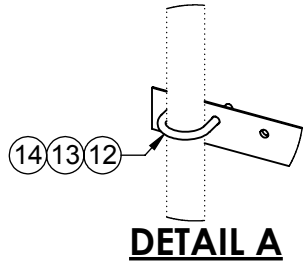


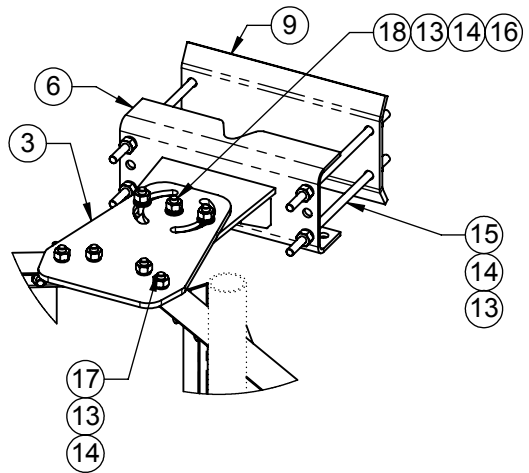
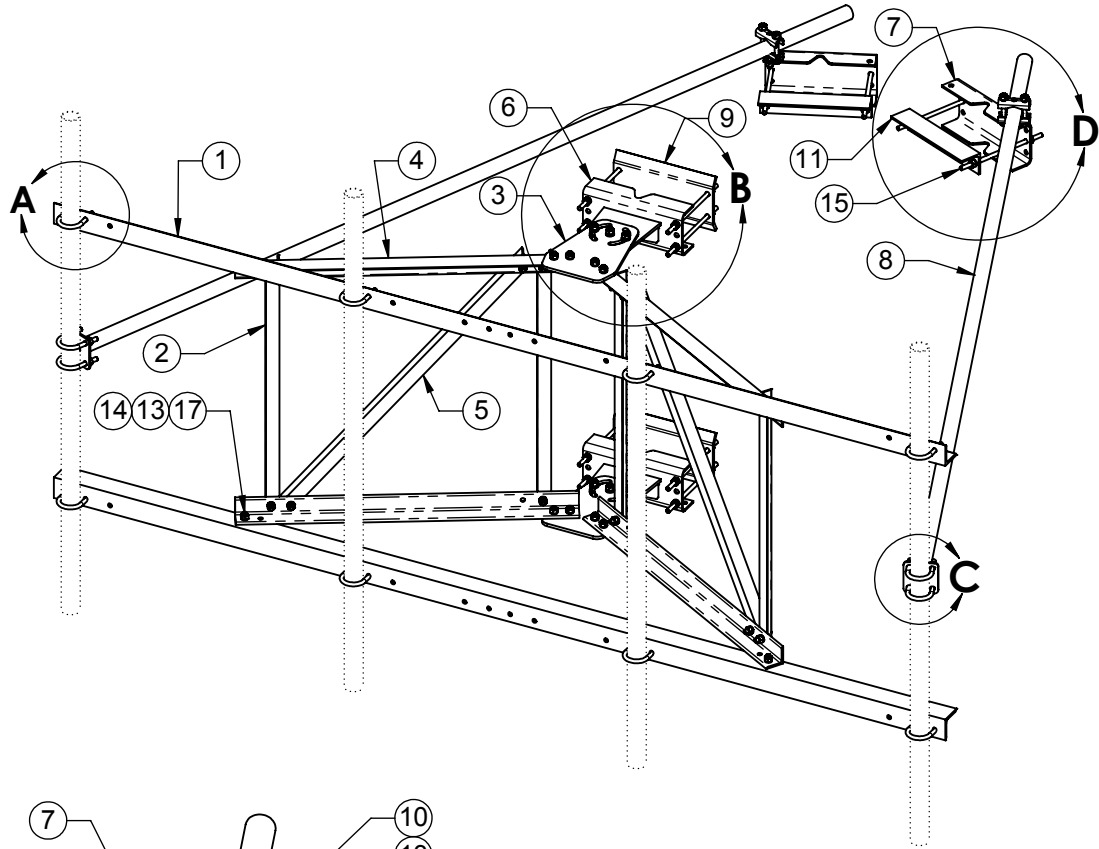
1. WIND RATING: 120 MPH (REV ANSI/TIA-222-G) WITH 4 - 4 SQ FT ANTENNAS INSTALLED.
- 2 ITEM 19, ANTENNA MOUNT PIPE, TO BE ORDERED SEPERATELY.
NOTE: MUST HAVE A MIN. OF 3 PIPES FOR MOUNT TO MEET LOADING REQUIREMENTS.
3. FULL COMPLEMENT OF ANTENNA MOUNT PIPES SHOWN.
- 4 ITEM 17, FLAT WASHERS, TO BE INSTALLED AGAINST SLOTS ON ITEMS 3 AND 6.
- 5 INSTALL THE CENTER PIVOT BOLT/NUT/WASHER ASSEMBLY AT THE TOP AND BOTTOM TOWER LEG BRACKET WITH THE DESIRED TOWER TAPER THEN PARTIALLY TIGHTEN. ROTATE THE SECTOR FRAME TO DESIRED AZIMUTH POSITION. INSTALL OUTER (2) BOLT/NUT/WASHER THROUGH THE CURVED SLOTS IN ITEM 3 AT THE TOP AND BOTTOM.
- 6 TO ACHIEVE POSTED WIND RATING, FULLY TIGHTEN ALL (6) AZIMUTH PIVOT POINT BOLTS BY TURNING NUTS 1/3 PAST "SNUG TIGHT" CONDITION AS DEFINED BY AISC 9TH EDITION ASD AFTER FINAL AZIMUTH POSITIONING.
7. AZIMUTH ROTATION: ±60° ON CENTER LINE OF TOWER LEG.
8. MAX TOWER LEG SIZE:
ROUND LEG - 8" OD
90° ANGLE LEG - 8" X 8"
60° ANGLE LEG - 11" TIP TO TIP

ITEM NO.	QTY.	PART NO.	DESCRIPTION
1	2	7000-2116R-2-10	MAIN FACE CHORD, L3" X 5/16"
2	4	7000-2116R-2-2	VERTICAL, FAN TRUSS, L1-3/4" X 3/16"
3	2	7000-2116R-2-3	TAPER BRACKET
4	4	7000-2116R-2-4	CHORD, FAN TRUSS, L2-1/2" X 1/4"
5	2	7000-2116R-2-5	DIAGONAL, FAN TRUSS, L1-3/4" X 3/16"
6	2	7000-2120-TB	WELDMENT, TOWER LEG BRACKET, UNIVERSAL
7	2	7000-2120-TB.1	TAPER BRACKET LEG ADAPTOR
8	2	7000-2120-01	(1.9 OD)10'-6" SWAY BAR ASSEMBLY
9	2	7000-2120-AA.2	BACKPLATE, ANGLE LEG ADAPTER,
10	2	7000-2120-KD.2	SWAY BAR CLAMP ASSEMBLY
11	2	7000-2120-KD.3	CLAMP ANGLE 1/4" X 3" X 14"
12	12	4499-4G	U-BOLT, 2 3/8" OD PIPE, GALV 1/2" DIA
13	84	4650G-BULK	NUT, 1/2" HEX, A563 GALV
14	90	4754G-BULK	WASHER, 1/2" RGLR LOCK, GALV
15	12	4375G-13	1/2" X 13" ALL THREAD
16	12	4750G-BULK	WASHER, 1/2" NARROW, GALV
17	24	4454G-BULK	BOLT, 1/2" x 1-1/2" LG HEX, A325 GALV.
18	6	4455G	BOLT, 1/2" X 2" LG HEX, A325 GLAV.
19	4	SEE PACKING LIST	2"(2-3/8"OD) OR 2-1/2"(2-7/8"OD) GALV PIPE
20	4	4499-2G	1/2" GALV U-BOLT FOR 2-7/8" OD (NOT SHOWN)

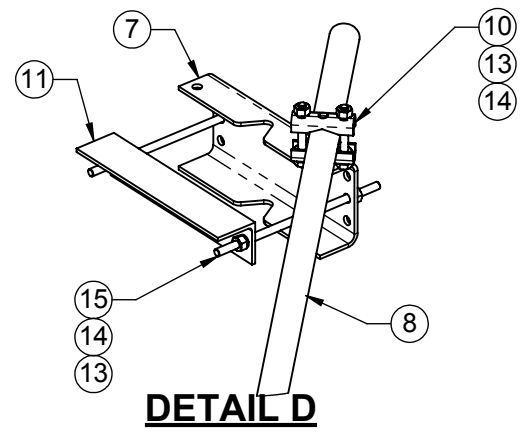
THE INFORMATION CONTAINED IN THIS DRAWING IS THE SOLE PROPERTY OF ALT. ANY REPRODUCTION IN PART OR WHOLE WITHOUT THE WRITTEN PERMISSION OF ALT IS PROHIBITED. 11/11/2016	CAD GENERATED DRAWING, DO NOT MANUALLY UPDATE		 800-950-7960 FAX 940-455-2817 www.altfabrication.com sales@altfabrication.com	122 Leesley Lane Argyle, Texas 76226		
	APPROVALS	DATE		TITLE: 10' SECTOR FRAME ROTATABLE, HEAVY DUTY		
	DRAWN	SF				09/01/09
	CHECKED	TU				09/04/09
	ENGINEER	RB				09/04/09
ISSUED			DWG. NO. 2116R-10HD	REV. D		
FINISH: HDG	WEIGHT: 462.8	SCALE: NTS	DO NOT SCALE DRAWING	SHEET: 1 OF 3		



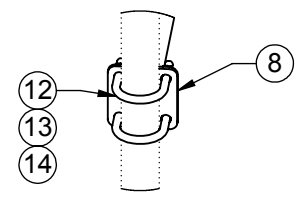
DETAIL A




DETAIL B

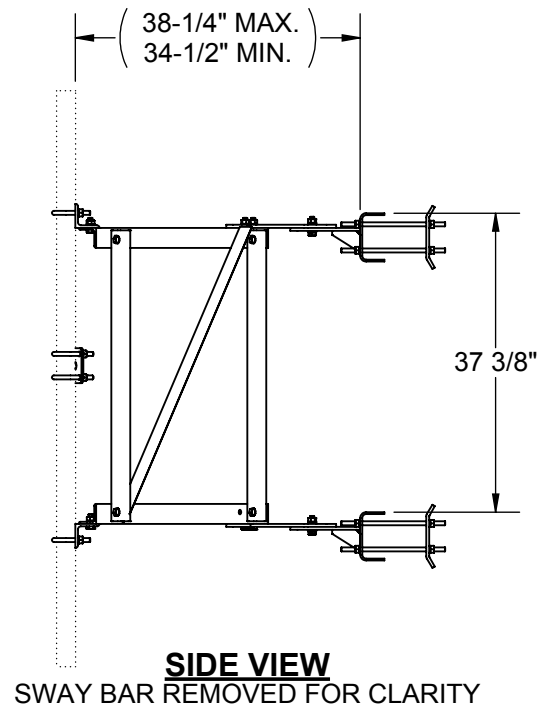
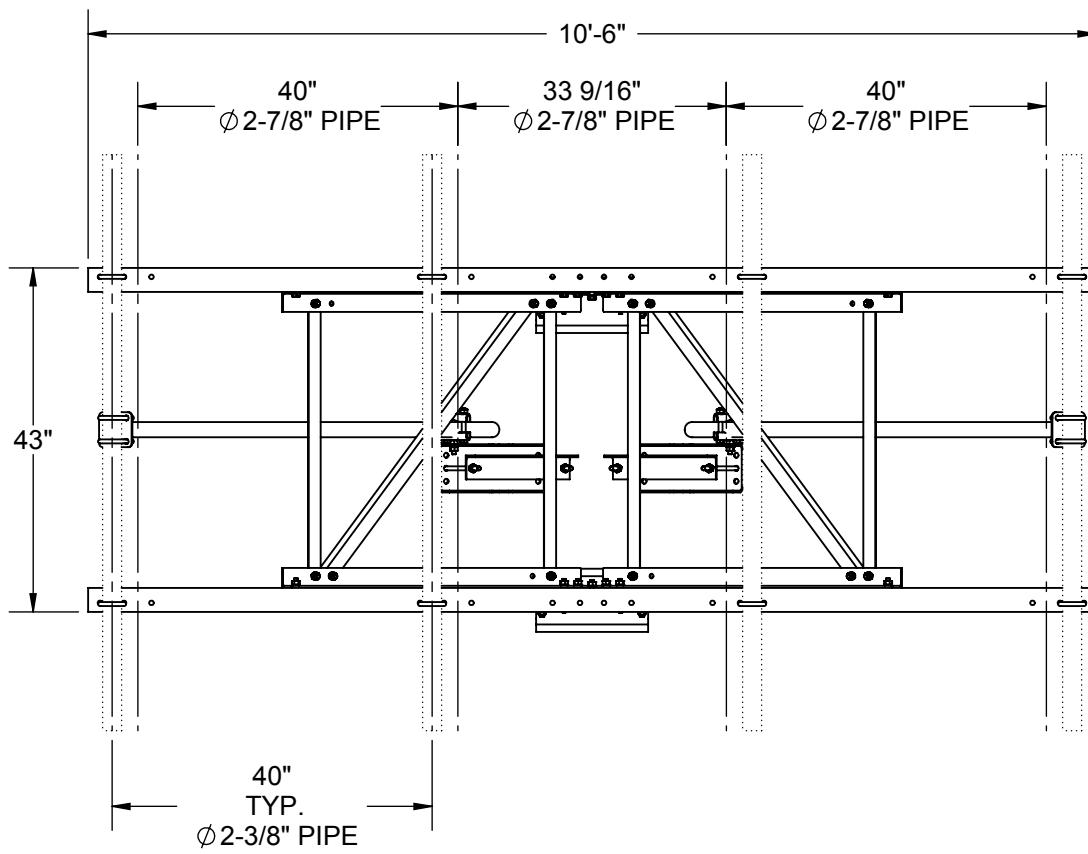
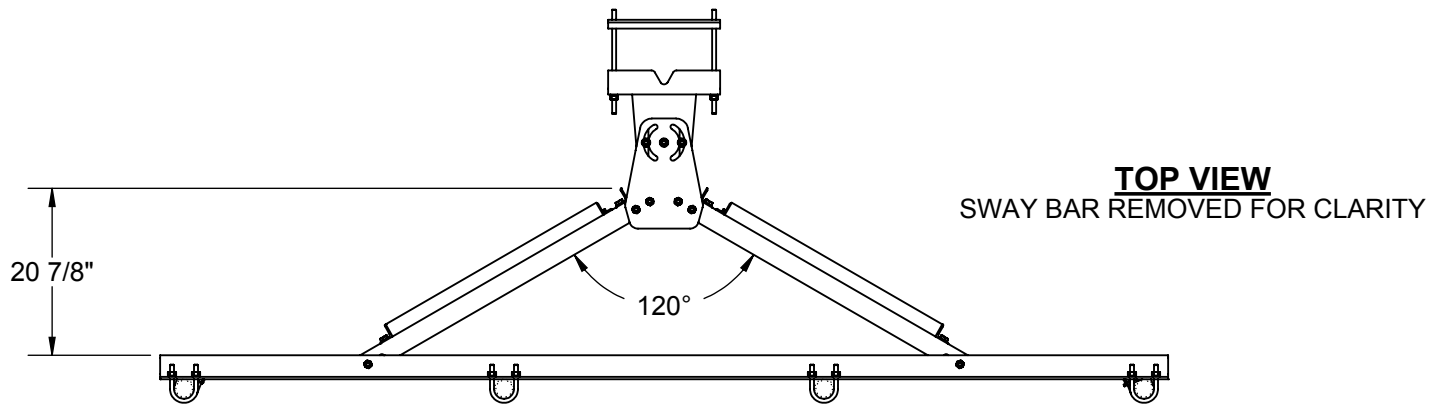


DETAIL D



DETAIL C

THE INFORMATION CONTAINED IN THIS DRAWING IS THE SOLE PROPERTY OF ALT. ANY REPRODUCTION IN PART OR WHOLE WITHOUT THE WRITTEN PERMISSION OF ALT IS PROHIBITED. 11/11/2016	 800-950-7960 FAX 940-455-2817 www.altfabrication.com sales@altfabrication.com	122 Leesley Lane Argyle, Texas 76226	TITLE:
			10' SECTOR FRAME ROTATABLE, HEAVY DUTY
FINISH: HDG	WEIGHT: 462.8	SCALE: NTS	DO NOT SCALE DRAWING
DWG. NO. 2116R-10HD		SHEET: 2 OF 3	
			REV. D



THE INFORMATION CONTAINED IN THIS DRAWING IS THE SOLE PROPERTY OF ALT. ANY REPRODUCTION IN PART OR WHOLE WITHOUT THE WRITTEN PERMISSION OF ALT IS PROHIBITED.

11/11/2016



800-950-7960
FAX 940-455-2817
www.altfabrication.com
sales@altfabrication.com

122 Leesley Lane
Argyle, Texas
76226

TITLE:
**10' SECTOR FRAME
ROTATABLE, HEAVY DUTY**

DWG. NO.
2116R-10HD

REV.
D