
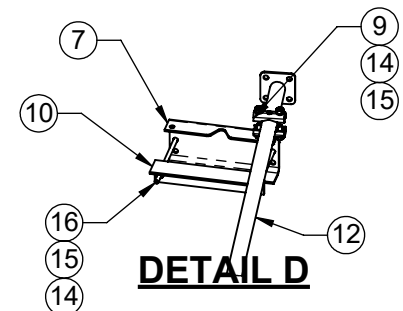
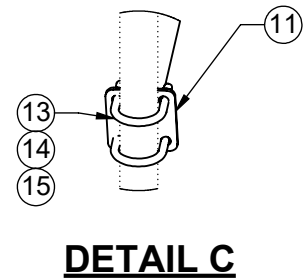
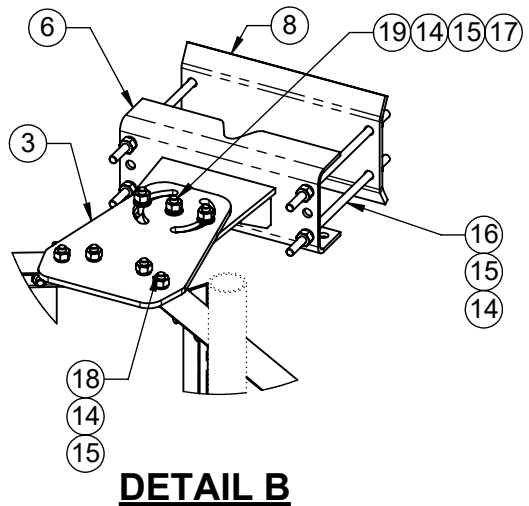
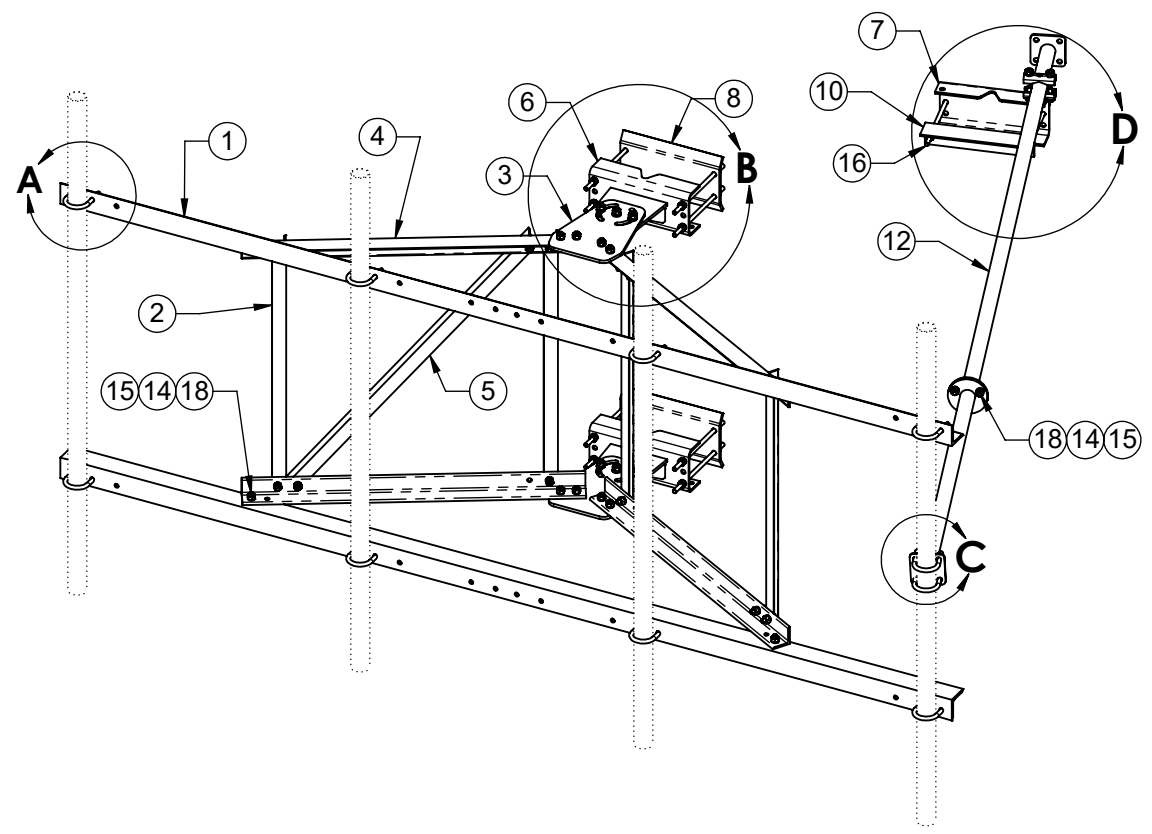
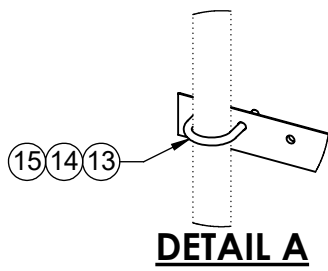



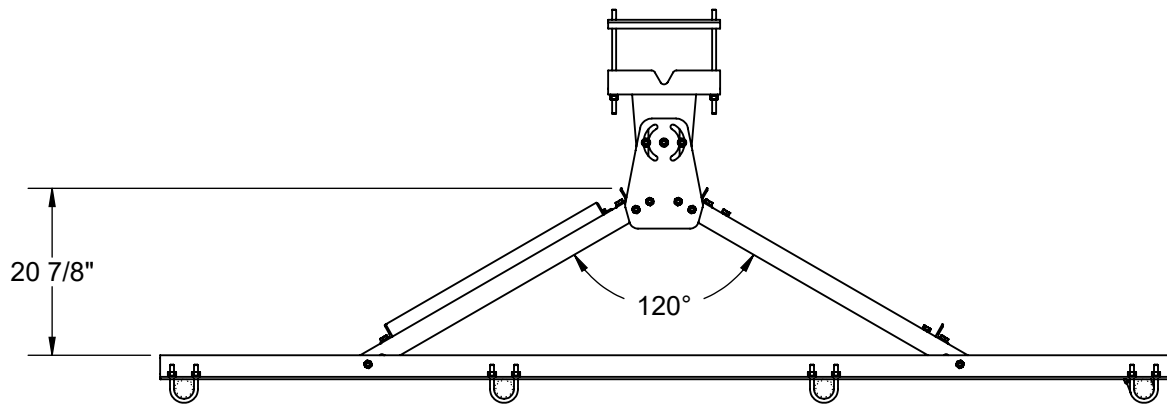
1. WIND RATING: 100 MPH (REV ANSI/TIA-222-G) WITH 4 - 4 SQ FT ANTENNAS INSTALLED.
- 2 ITEM 20, ANTENNA MOUNT PIPE, TO BE ORDERED SEPERATELY.
NOTE: MUST HAVE A MIN. OF 3 PIPES FOR MOUNT TO MEET LOADING REQUIREMENTS.
3. FULL COMPLEMENT OF ANTENNA MOUNT PIPES SHOWN.
- 4 ITEM 17, FLAT WASHERS, TO BE INSTALLED AGAINST SLOTS ON ITEMS 3 AND 6.
- 5 INSTALL THE CENTER PIVOT BOLT/NUT/WASHER ASSEMBLY AT THE TOP AND BOTTOM TOWER LEG BRACKET WITH THE DESIRED TOWER TAPER THEN PARTIALLY TIGHTEN. ROTATE THE SECTOR FRAME TO DESIRED AZIMUTH POSITION. INSTALL OUTER (2) BOLT/NUT/WASHER THROUGH THE CURVED SLOTS IN ITEM 3 AT THE TOP AND BOTTOM.
- 6 TO ACHIEVE POSTED WIND RATING, FULLY TIGHTEN ALL (6) AZIMUTH PIVOT POINT BOLTS BY TURNING NUTS 1/3 PAST "SNUG TIGHT" CONDITION AS DEFINED BY AISC 9TH EDITION ASD AFTER FINAL AZIMUTH POSITIONING.
7. AZIMUTH ROTATION: $\pm 60^\circ$ ON CENTER LINE OF TOWER LEG.
8. MAX TOWER LEG SIZE:
ROUND LEG - 8" OD
90° ANGLE LEG - 8" X 8"
60° ANGLE LEG - 11" TIP TO TIP

ITEM NO.	QTY.	PART NO.	DESCRIPTION
1	2	7000-2116R-2-10	MAIN FACE CHORD, L3" X 5/16"
2	4	7000-2116R-2-2	VERTICAL, FAN TRUSS, L1-3/4" X 3/16"
3	2	7000-2116R-2-3	TAPER BRACKET
4	4	7000-2116R-2-4	CHORD, FAN TRUSS, L2-1/2" X 1/4"
5	2	7000-2116R-2-5	DIAGONAL, FAN TRUSS, L1-3/4" X 3/16"
6	2	7000-2120-TB	WELDMENT, TOWER LEG BRACKET, UNIVERSAL
7	1	7000-2120-TB.1	TAPER BRACKET LEG ADAPTOR
8	2	7000-2120-AA.2	BACKPLATE, ANGLE LEG ADAPTER,
9	1	7000-2120-KD.2	SWAY BAR CLAMP ASSEMBLY
10	1	7000-2120-KD.3	CLAMP ANGLE 1/4" X 3" X 14"
11	1	7000-2120-KD.42	1.9"OD X 42" SWAY BAR WELDMENT
12	1	7000-2120-KD.84	1.9"OD X 84" SWAY BAR WELDMENT
13	10	4499-4G	U-BOLT, 2 3/8" OD PIPE, GALV 1/2" DIA
14	76	4650G-BULK	NUT, 1/2" HEX, A563 GALV
15	82	4754G-BULK	WASHER, 1/2" RGLR LOCK, GALV
16	10	4375G-13	1/2" X 13" ALL THREAD
17	12	4750G-BULK	WASHER, 1/2" NARROW, GALV
18	27	4454G-BULK	BOLT, 1/2" x 1-1/2" LG HEX, A325 GALV.
19	6	4455G	BOLT, 1/2" X 2" LG HEX, A325 GLAV.
20	4	2125-XX	2-3/8" OD ANTENNA MOUNT PIPE
21	10	4499-2G	1/2" GALV U-BOLT FOR 2-7/8" OD (NOT SHOWN)

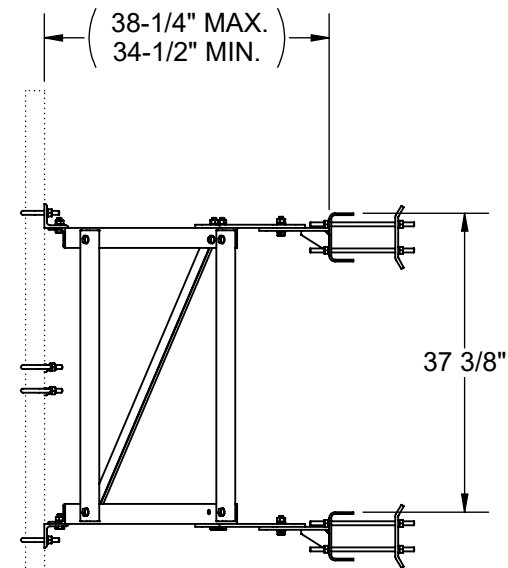
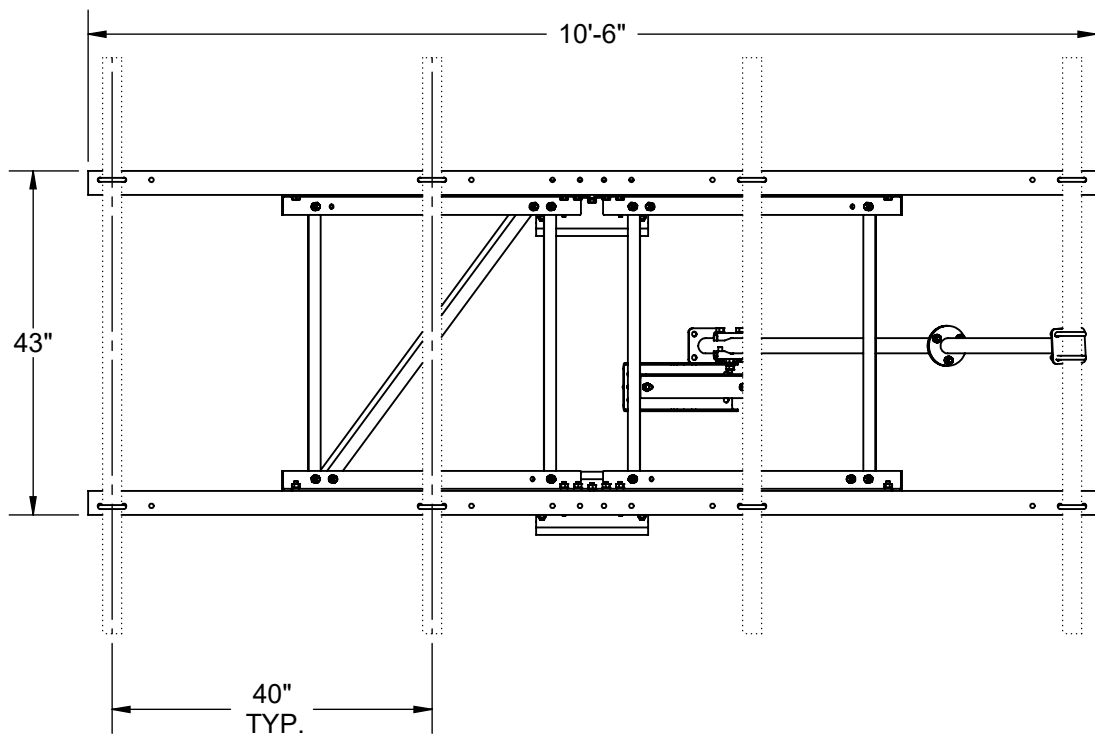
THE INFORMATION CONTAINED IN THIS DRAWING IS THE SOLE PROPERTY OF ALT. ANY REPRODUCTION IN PART OR WHOLE WITHOUT THE WRITTEN PERMISSION OF ALT IS PROHIBITED. 5/17/2018 FINISH: NONE WEIGHT: 410	CAD GENERATED DRAWING, DO NOT MANUALLY UPDATE		 800-950-7960 FAX 940-455-2817 www.altfabrication.com sales@altfabrication.com	122 Leesley Lane Argyle, Texas 76226		
	APPROVALS			DATE		TITLE: 10' SECTOR FRAME ROTATABLE DWG. NO. 2116R-10
	DRAWN	SF		09/01/09		
	CHECKED	TU		09/04/09		
	ENGINEER	RB		09/04/09		
ISSUED				REV. E		
SCALE: NTS		DO NOT SCALE DRAWING		SHEET: 1 OF 3		



THE INFORMATION CONTAINED IN THIS DRAWING IS THE SOLE PROPERTY OF ALT. ANY REPRODUCTION IN PART OR WHOLE WITHOUT THE WRITTEN PERMISSION OF ALT IS PROHIBITED. 5/17/2018	 800-950-7960 FAX 940-455-2817 www.altfabrication.com sales@altfabrication.com	122 Leesley Lane Argyle, Texas 76226		
		TITLE: 10' SECTOR FRAME ROTATABLE		
FINISH: NONE	WEIGHT: 410	SCALE: NTS	DO NOT SCALE DRAWING	SHEET: 2 OF 3
				REV. E



TOP VIEW
SWAY BAR REMOVED FOR CLARITY



SIDE VIEW
SWAY BAR REMOVED FOR CLARITY

THE INFORMATION CONTAINED
IN THIS DRAWING IS THE SOLE
PROPERTY OF ALT. ANY
REPRODUCTION IN PART OR
WHOLE WITHOUT THE WRITTEN
PERMISSION OF ALT IS
PROHIBITED.

5/17/2018



800-950-7960
FAX 940-455-2817
www.altfabrication.com
sales@altfabrication.com

122 Leesley Lane
Argyle, Texas
76226

TITLE:
**10' SECTOR FRAME
ROTATABLE**

DWG. NO.
2116R-10

REV.
E