

ITEM NO.	QTY.	PART NO.	DESCRIPTION
1	1	7000-2116KD-1	WELDMENT, SIDE ARM
2	2	7000-2116KD-12	BOOM WELDMENT, 12'
3	2	7000-2120-TB	WELDMENT, TOWER LEG BRACKET, UNIVERSAL
4	4	2125-XX 2	2-3/8" OD ANTENNA MOUNT PIPE
5	4	7000-2116KD-2	Kick Back Angles 2116KD
6	12	4499-4G	U-BOLT,2 3/8" OD PIPE, GALV 1/2" DIA
7	82	4650G-BULK	NUT, 1/2" HEX, A563 GALV
8	82	4754G-BULK	WASHER, 1/2" RGLR LOCK, GALV
9	22	4454G-BULK	1/2" X 1-1/2" A325 GLAV. HEX BOLT
10	6	4455G	BOLT, 1/2" X 2" LG HEX, A325 GLAV.
11	12	4750G-BULK 4	WASHER, 1/2" NARROW, GALV
12	2	7000-2120-KD.2	SWAY BAR CLAMP ASSEMBLY
13	2	7000-2120-TB.1	TAPER BRACKET LEG ADAPTOR
14	2	7000-2120-KD.3	CLAMP ANGLE 1/4" X 3" X 14"
15	2	7000-2120-AA.2	BACKPLATE, ANGLE LEG ADAPTER,
16	12	4375G-13	ALL THREAD, 1/2" x 13" LG, GALV
17	2	7000-2120-KD.42	1.9"OD X 42" SWAY BAR WELDMENT
18	2	7000-2120-KD.84	1.9"OD X 84" SWAY BAR WELDMENT
19	8	4499-2G	1/2" GALV U-BOLT FOR 2-7/8" OD (NOT SHOWN)

1. ALT FABRICATION MOUNT 2116KD-12HD IS CLASSIFIED AS M1200R(1050)-4[6] BASED ON TIA-5053 MOUNTING SYSTEM CLASSIFICATION STANDARD.
- 2

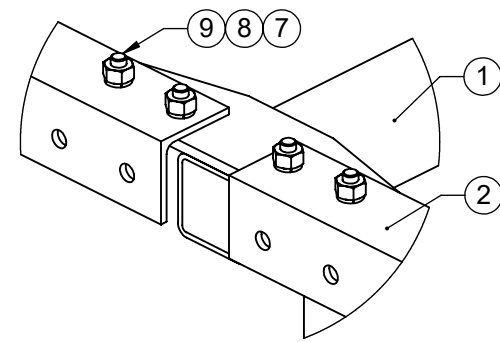
ITEM 4, ANTENNA MOUNT PIPE, TO BE ORDERED SEPERATELY.
NOTE: MUST HAVE 4 PIPES FOR MOUNT TO MEET LOADING REQUIREMENTS.
3. FULL COMPLEMENT OF ANTENNA MOUNT PIPES SHOWN. ANTENNA PIPE WEIGHT NOT INCLUDED IN TOTAL MOUNT WEIGHT SHOWN BELOW
- 4

ITEM 11, FLAT WASHERS, TO BE INSTALLED AGAINST SLOTS ON ITEMS 1 AND 3.
- 5

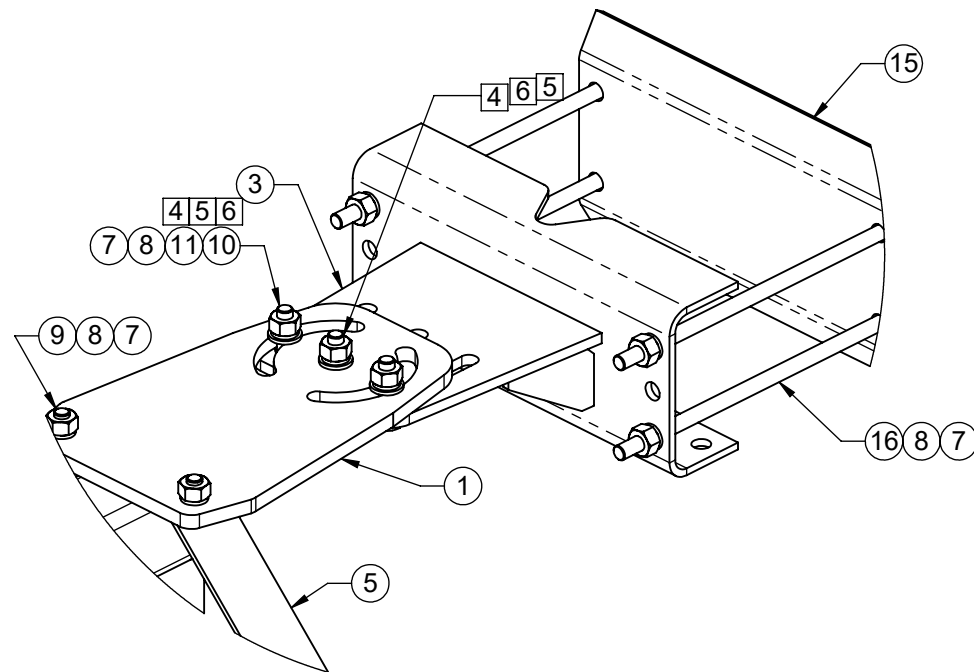
INSTALL THE CENTER PIVOT BOLT/NUT/WASHER ASSEMBLY AT THE TOP AND BOTTOM TOWER LEG BRACKET WITH THE DESIRED TOWER TAPER THEN PARTIALLY TIGHTEN. ROTATE THE SECTOR FRAME TO DESIRED AZIMUTH POSITION. INSTALL OUTER (2) BOLT/NUT/WASHER THROUGH THE CURVED SLOTS IN ITEM 1 AT THE TOP AND BOTTOM.
- 6

TO ACHIEVE POSTED WIND RATING, FULLY TIGHTEN ALL (6) AZIMUTH PIVOT POINT BOLTS BY TURNING NUTS 1/3 PAST "SNUG TIGHT" CONDITION AS DEFINED BY AISC 9TH EDITION ASD AFTER FINAL AZIMUTH POSITIONING.
7. AZIMUTH ROTATION: ±60° ON CENTER LINE OF TOWER LEG.
8. MAX TOWER LEG SIZE:
ROUND LEG - 8" OD
90° ANGLE LEG - 8" X 8"
60° ANGLE LEG - 11" TIP TO TIP
9. ALLOWABLE VERTICAL CENTERLINE OFFSET, e = +/- 6in.

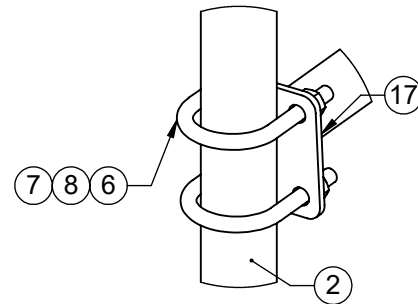
FINISH HDG		MATERIAL PROD#		<div><div>ALT</div><div>800-950-7960 FAX 940-455-2817 www.altfabrication.com sales@altfabrication.com</div><div>122 Leesley Lane Argyle, Texas 76226</div></div>	
		APPROVALS	DATE	TITLE:	
UNLESS OTHERWISE SPECIFIED DIMENSIONS ARE IN INCHES. TOLERANCES ARE: FRACTIONS DECIMALS ANGLES ± 1/32 .XX ± .XX ± 1° .XXX ± .XXX 5/21/2018		DRAWN			



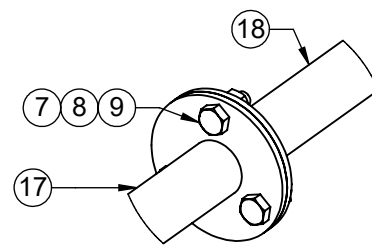
DETAIL B



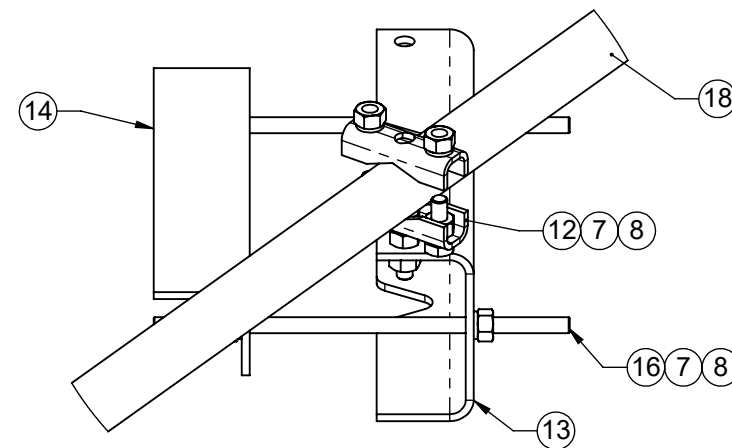
DETAIL C



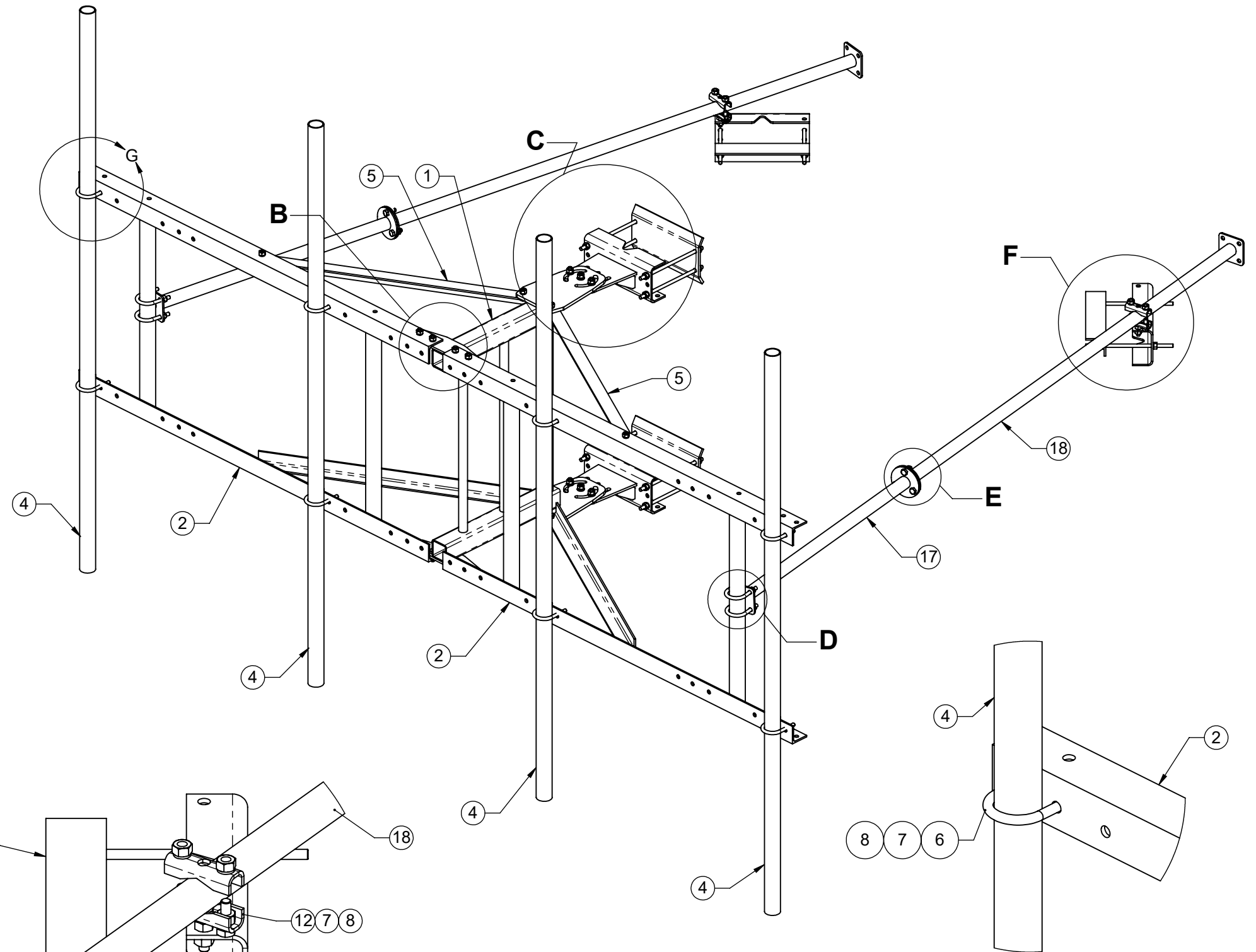
DETAIL D




DETAIL E

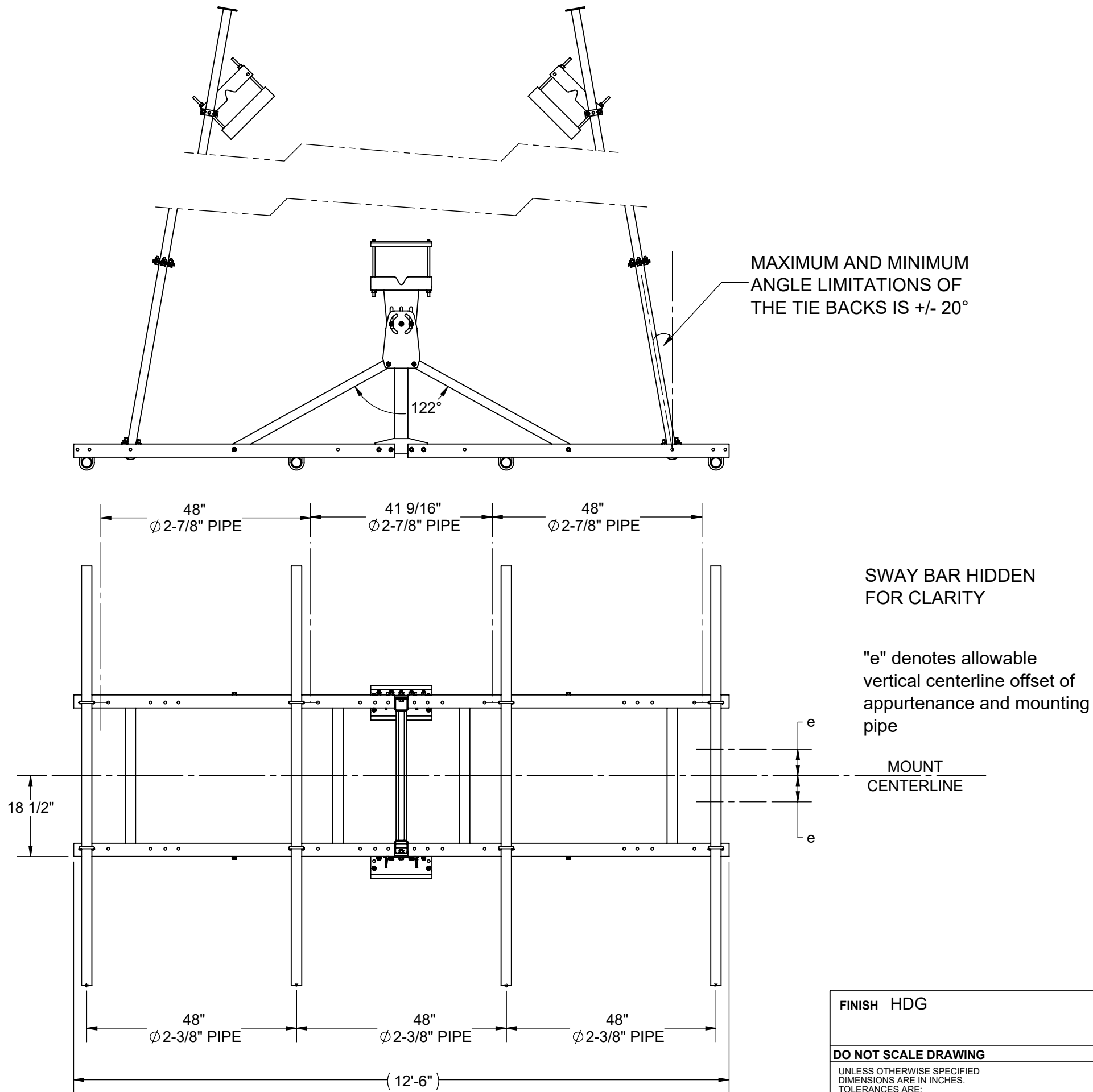


DETAIL F

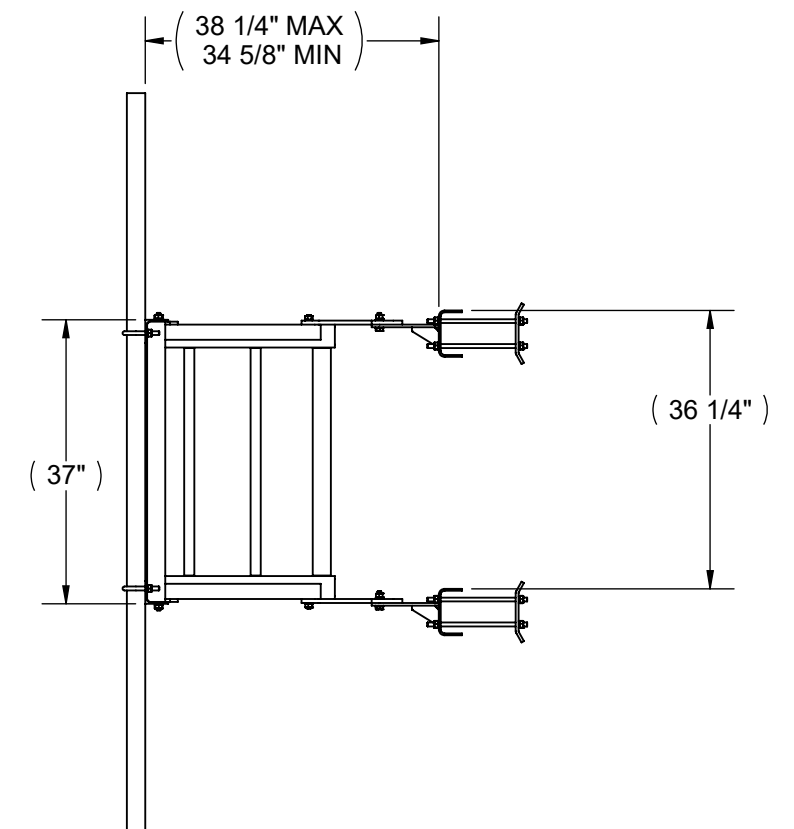



DETAIL G

FINISH HDG		MATERIAL PROD# GALVANIZED STEEL		 <div>800-950-7960 FAX 940-455-2817 www.altfabrication.com sales@altfabrication.com</div>		122 Leesley Lane Argyle, Texas 76226		
DO NOT SCALE DRAWING		APPROVALS		DATE		TITLE: 12' KNOCK-DOWN SECTOR FRAME		
UNLESS OTHERWISE SPECIFIED DIMENSIONS ARE IN INCHES. TOLERANCES ARE: FRACTIONS DECIMALS ANGLES ± 1/32 .XX ± .XX ± 1° .XXX ± .XXX 5/21/2018		DRAWN AS		08/24/17				
		CHECKED SF		09/05/17				
		ENGR.						
THE INFORMATION CONTAINED IN THIS DRAWING IS THE SOLE PROPERTY OF ALT. ANY REPRODUCTION IN PART OR WHOLE WITHOUT THE WRITTEN PERMISSION OF ALT IS PROHIBITED.		ISSUED		SIZE B		DWG. NO. 2116KD-12HD		REV. C
		MANUFACT.		SCALE: NTS		WEIGHT 593.74		SHEET 2 OF 3



SWAY BAR HIDDEN FOR CLARITY



FINISH HDG		MATERIAL PROD# GALVANIZED STEEL		<div><div>800-950-7960 FAX 940-455-2817 www.altfabrication.com sales@altfabrication.com</div></div>		122 Leesley Lane Argyle, Texas 76226					
DO NOT SCALE DRAWING		APPROVALS		DATE		TITLE:					
UNLESS OTHERWISE SPECIFIED DIMENSIONS ARE IN INCHES. TOLERANCES ARE: FRACTIONS DECIMALS ANGLES ± 1/32 .XX ± .XX ± 1° .XXX ± .XXX 5/21/2018		DRAWN AS		08/24/17		12' KNOCK-DOWN SECTOR FRAME					
		CHECKED SF		09/05/17							
		ENGR.				SIZE		DWG. NO.		REV.	
		ISSUED				B		2116KD-12HD		C	
THE INFORMATION CONTAINED IN THIS DRAWING IS THE SOLE PROPERTY OF ALT. ANY REPRODUCTION IN PART OR WHOLE WITHOUT THE WRITTEN PERMISSION OF ALT IS PROHIBITED.		MANUFACT.				SCALE: NTS		WEIGHT 593.74		SHEET 3 OF 3	