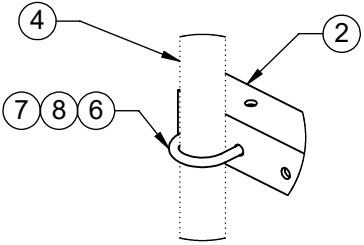
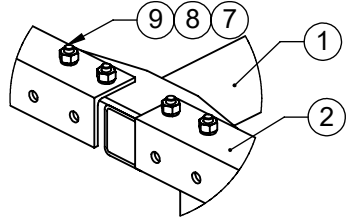


9. ALLOWABLE VERTICAL CENTERLINE OFFSET, $e = \pm 6$ in

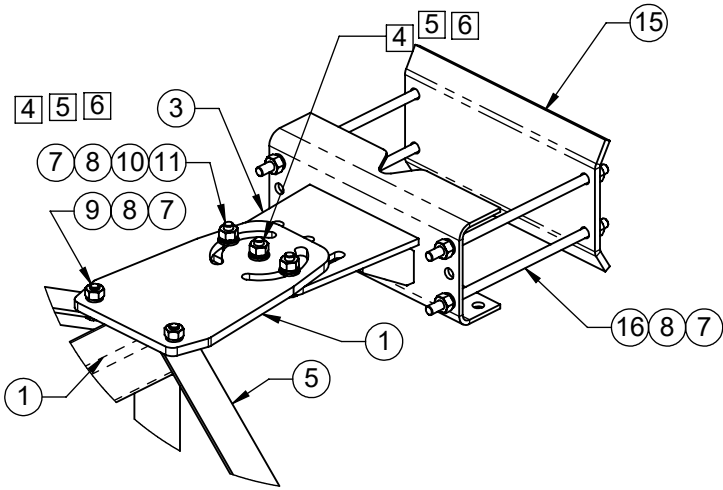
5	DWG. NO.			REV.
	2116KD-12			E
5	SCALE: NTS	DO NOT SCALE DRAWING	SHEET 1 OF 3	



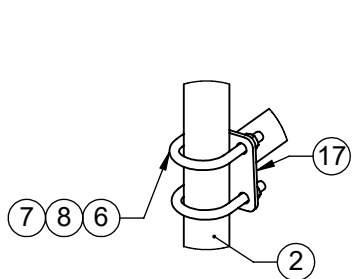
DETAIL A



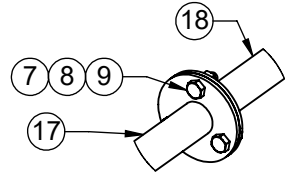
DETAIL B



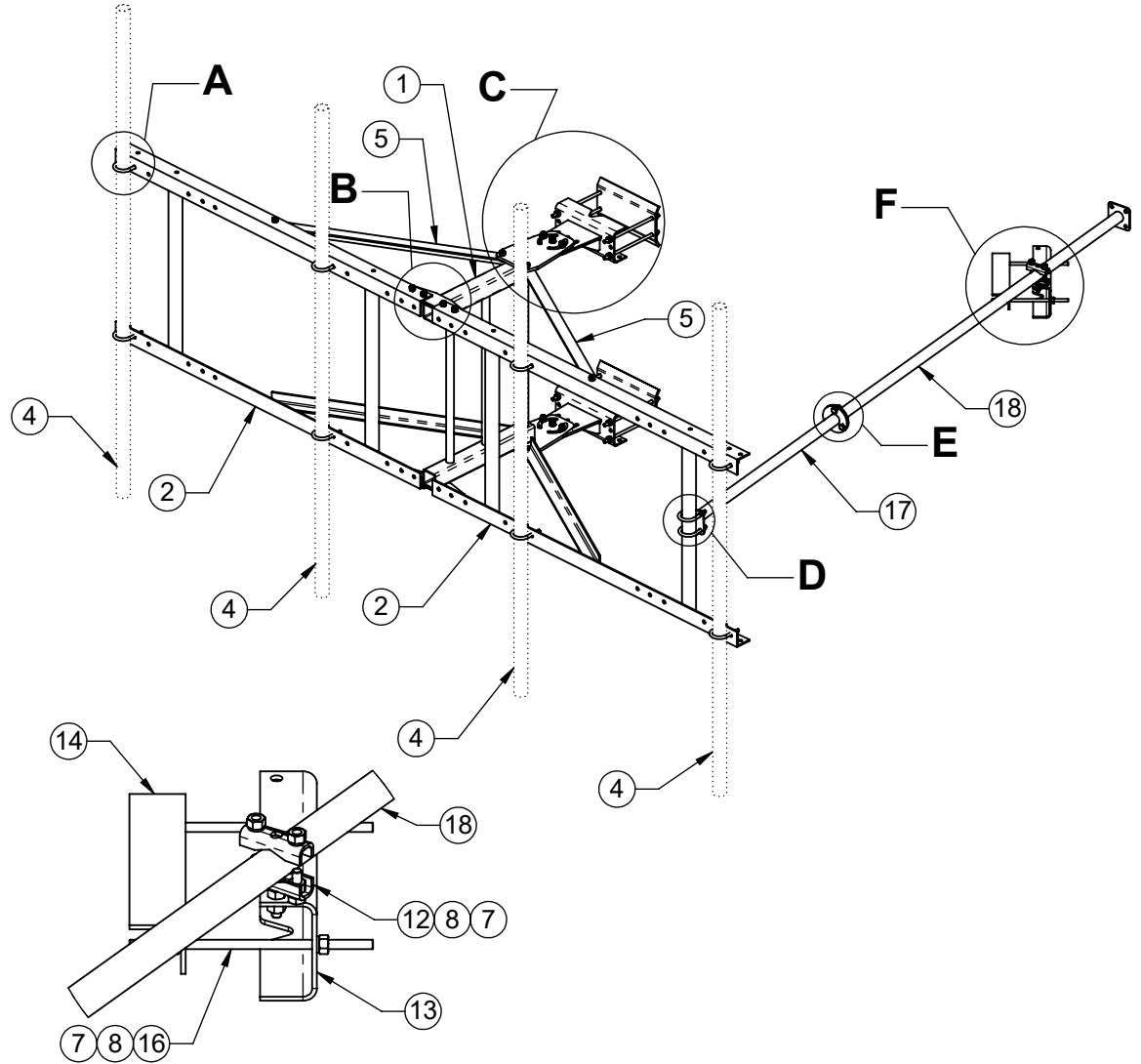
DETAIL C



DETAIL D



DETAIL E



DETAIL F

THE INFORMATION CONTAINED
IN THIS DRAWING IS THE SOLE
PROPERTY OF ALT. ANY
REPRODUCTION IN PART OR
WHOLE WITHOUT THE WRITTEN
PERMISSION OF ALT IS
PROHIBITED.

5/21/2018

CAD GENERATED DRAWING,
DO NOT MANUALLY UPDATE

APPROVALS		DATE
DRAWN	CDM	08/10/05
CHECKED	JMD	08/17/05
ENGINEER	JMD	08/17/05
ISSUED	DMR	08/18/05

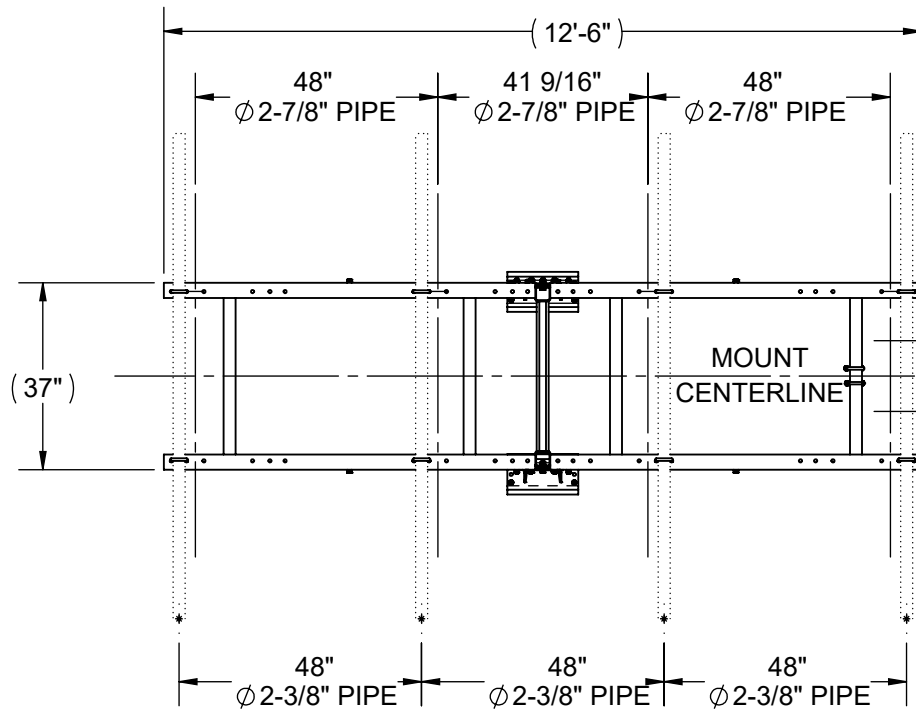
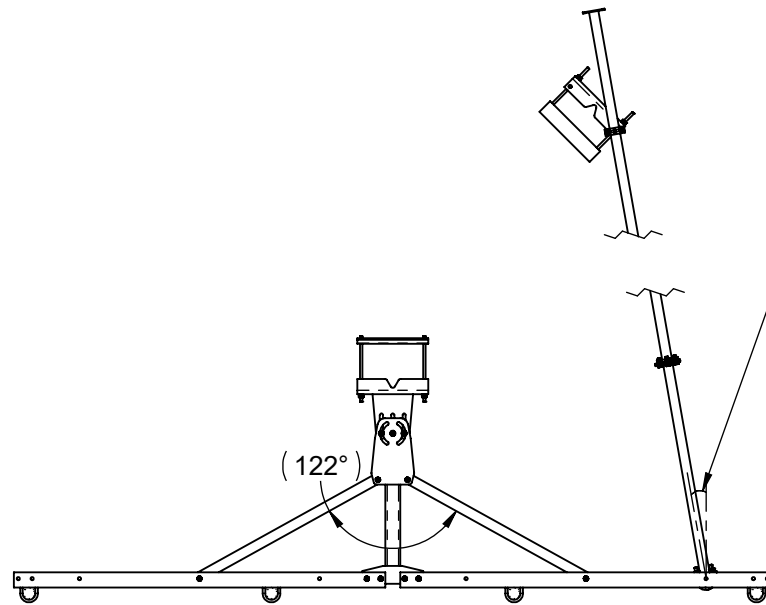


800-950-7960
FAX 940-455-2817
www.altfabrication.com
sales@altfabrication.com

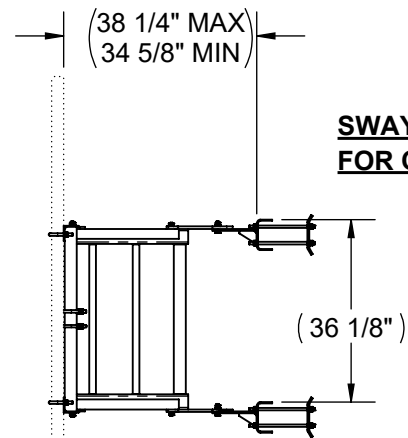
122 Leesley Lane
Argyle, Texas
76226

**12' KNOCK DOWN
SECTOR FRAME**

DWG. NO.	2116KD-12	REV.	E
SCALE: NTS	DO NOT SCALE DRAWING	SHEET 2 OF 3	



"e" DENOTES ALLOWABLE VERTICAL CENTERLINE OFFSET OF APPURTENANCE AND MOUNTING PIPE



SWAY BAR REMOVED FOR CLARITY

THE INFORMATION CONTAINED IN THIS DRAWING IS THE SOLE PROPERTY OF ALT. ANY REPRODUCTION IN PART OR WHOLE WITHOUT THE WRITTEN PERMISSION OF ALT IS PROHIBITED.

5/21/2018

CAD GENERATED DRAWING,
DO NOT MANUALLY UPDATE



800-950-7933
FAX 940-455-2817
www.altfabrication.com
sales@altfabrication.com

122 Leesley Lane
Argyle, Texas
76226

APPROVALS		DATE
DRAWN	CDM	08/10/05
CHECKED	JMD	08/17/05
ENGINEER	JMD	08/17/05
ISSUED	DMR	08/18/05

**12' KNOCK DOWN
SECTOR FRAME**

DWG. NO.

2116KD-12

REV.

E

SCALE: NTS | DO NOT SCALE DRAWING | SHEET 3 OF 3