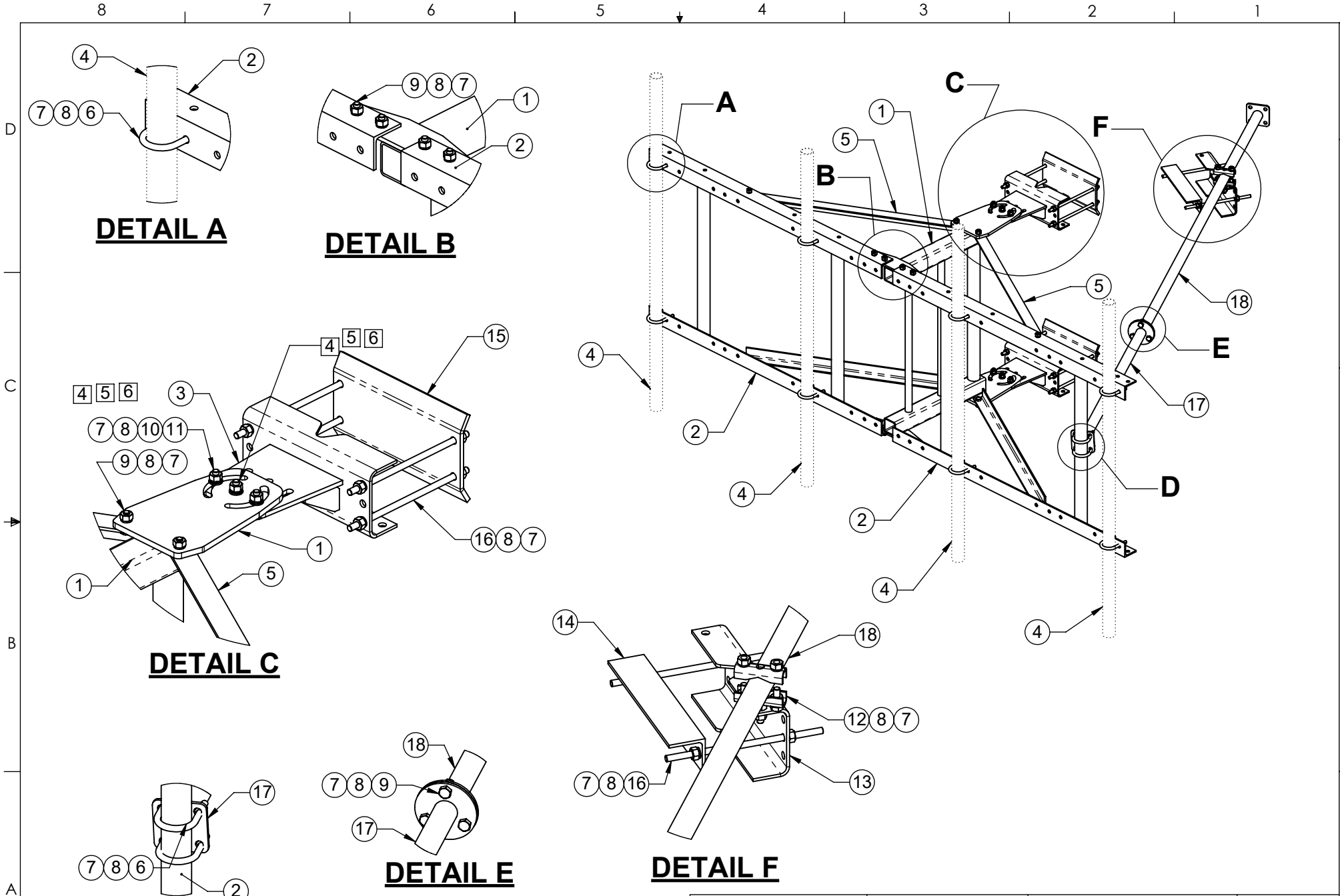


1. WIND RATING: 90 MPH WITH 4 - 4 SQ FT ANTENNAS INSTALLED.
2. ITEM 4, ANTENNA MOUNT PIPE, TO BE ORDERED SEPERATELY.
3. FULL COMPLEMENT OF ANTENNA MOUNT PIPES SHOWN.
4. ITEM 10, FLAT WASHERS, TO BE INSTALLED AGAINST SLOTS ON ITEMS 1 AND 3.
5. INSTALL THE CENTER PIVOT BOLT/NUT/WASHER ASSEMBLY AT THE TOP AND BOTTOM TOWER LEG BRACKET WITH THE DESIRED TOWER TAPER THEN PARTIALLY TIGHTEN. ROTATE THE SECTOR FRAME TO DESIRED AZIMUTH POSITION. INSTALL OUTER (2) BOLT/NUT/WASHER THROUGH THE CURVED SLOTS IN ITEM 1 AT THE TOP AND BOTTOM.
6. TO ACHIEVE POSTED WIND RATING, FULLY TIGHTEN ALL (6) AZIMUTH PIVOT POINT BOLTS BY TURNING NUTS 1/3 PAST "SNUG TIGHT" CONDITION AS DEFINED BY AISC 9TH EDITION ASD AFTER FINAL AZIMUTH POSITIONING.
7. AZIMUTH ROTATION: $\pm 60^\circ$ ON CENTER LINE OF TOWER LEG.
8. MAX TOWER LEG SIZE:
ROUND LEG - 8" OD
90° ANGLE LEG - 8" X 8"
60° ANGLE LEG - 11" TIP TO TIP

5	DWG. NO.			REV.
5	2116KD-10			E
	SCALE: NTS	DO NOT SCALE DRAWING	SHEET 1 OF 3	



THE INFORMATION CONTAINED
IN THIS DRAWING IS THE SOLE
PROPERTY OF ALT. ANY
REPRODUCTION IN PART OR
WHOLE WITHOUT THE WRITTEN
PERMISSION OF ALT IS
PROHIBITED.

5/21/2018

CAD GENERATED DRAWING,
DO NOT MANUALLY UPDATE

APPROVALS		DATE
DRAWN	CDM	08/10/05
CHECKED	JMD	08/17/05
ENGINEER	JMD	08/17/05
ISSUED	DMR	08/18/05



800-950-7960
FAX 940-455-2817
www.altfabrication.com
sales@altfabrication.com

122 Leesley Lane
Argyle, Texas
76226

10' KNOCK DOWN SECTOR FRAME

DWG. NO.

2116KD-10

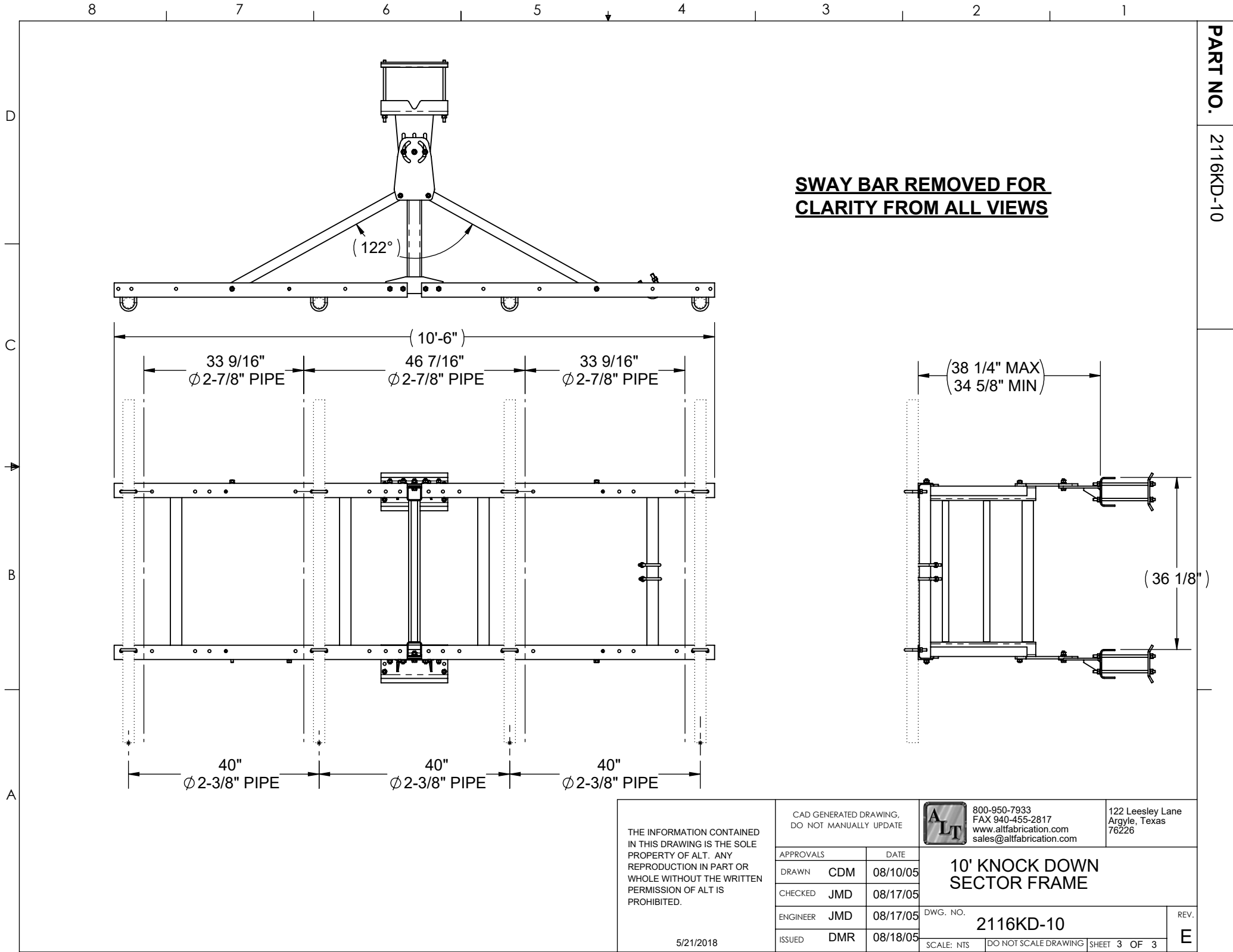
SCALE: NTS

DO NOT SCALE DRAWING

SHEET 2 OF 3

REV.

E



SWAY BAR REMOVED FOR CLARITY FROM ALL VIEWS


PART NO.
2116KD-10

THE INFORMATION CONTAINED IN THIS DRAWING IS THE SOLE PROPERTY OF ALT. ANY REPRODUCTION IN PART OR WHOLE WITHOUT THE WRITTEN PERMISSION OF ALT IS PROHIBITED.

5/21/2018

CAD GENERATED DRAWING, DO NOT MANUALLY UPDATE

APPROVALS		DATE
DRAWN	CDM	08/10/05
CHECKED	JMD	08/17/05
ENGINEER	JMD	08/17/05
ISSUED	DMR	08/18/05



800-950-7933
FAX 940-455-2817
www.altfabrication.com
sales@altfabrication.com

122 Leesley Lane
Argyle, Texas
76226

10' KNOCK DOWN SECTOR FRAME

DWG. NO. **2116KD-10**

SCALE: NTS | DO NOT SCALE DRAWING | SHEET 3 OF 3

REV. **E**