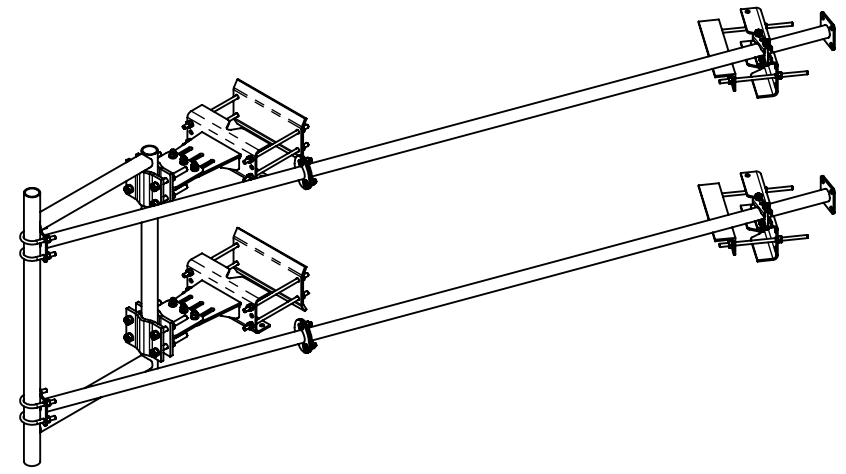



ITEM NO.	QTY.	PART NO.	DESCRIPTION
1	2	7000-2120-TB	WELDMENT, TOWER LEG BRACKET, UNIVERSAL
2	1	3	WELDMENT, SIDE ARM
3	2	7000-2120-KD.42	42" SWAY BAR SECTION, 1.90" OD PIPE
4	2	7000-2120-KD.2	SWAY BAR CLAMP ASSEMBLY
5	2	7000-2120-KD.84	84" SWAY BAR SECTION, 1.90" OD PIPE
6	2	7000-2111-U.1	WELDMENT, TAPER BRACKET, OUTSIDE
7	2	7000-2116HD-1.1	CLAMP, ROUND PIPE
8	2	7000-2120-AA.2	BACKPLATE, ANGLE LEG ADAPTER,
9	50	4754G	WASHER, 1/2" RGLR LOCK, GALV
10	50	4650G-BULK	NUT, 1/2" HEX, A563 GALV
11	12	4375G-13	1/2" X 13" ALL THREAD
12	16	4660G-BULK	5/8" GALV HEX NUT
13	16	4764G-BULK	5/8" GALV LOCK WASHER
14	8	4325G-7	5/8" X 7" ALL THREAD
15	6	4455G 4	BOLT, 1/2" -13UNC X 2" LG HEX, A325 GALV
16	12	4750G-BULK	WASHER, 1/2" NARROW, GALV
17	2	7000-2120-TB.1	TAPER BRACKET LEG ADAPTOR
18	2	7000-2120-KD.3	CLAMP ANGLE 1/4" X 3" X 14"
19	6	4454G-BULK	1/2" X 1-1/2" A325 GLAV. HEX BOLT
20	4	4499-4G	U-BOLT, 2"(2.38" OD PIPE), GALV

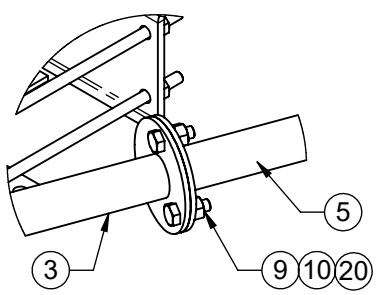
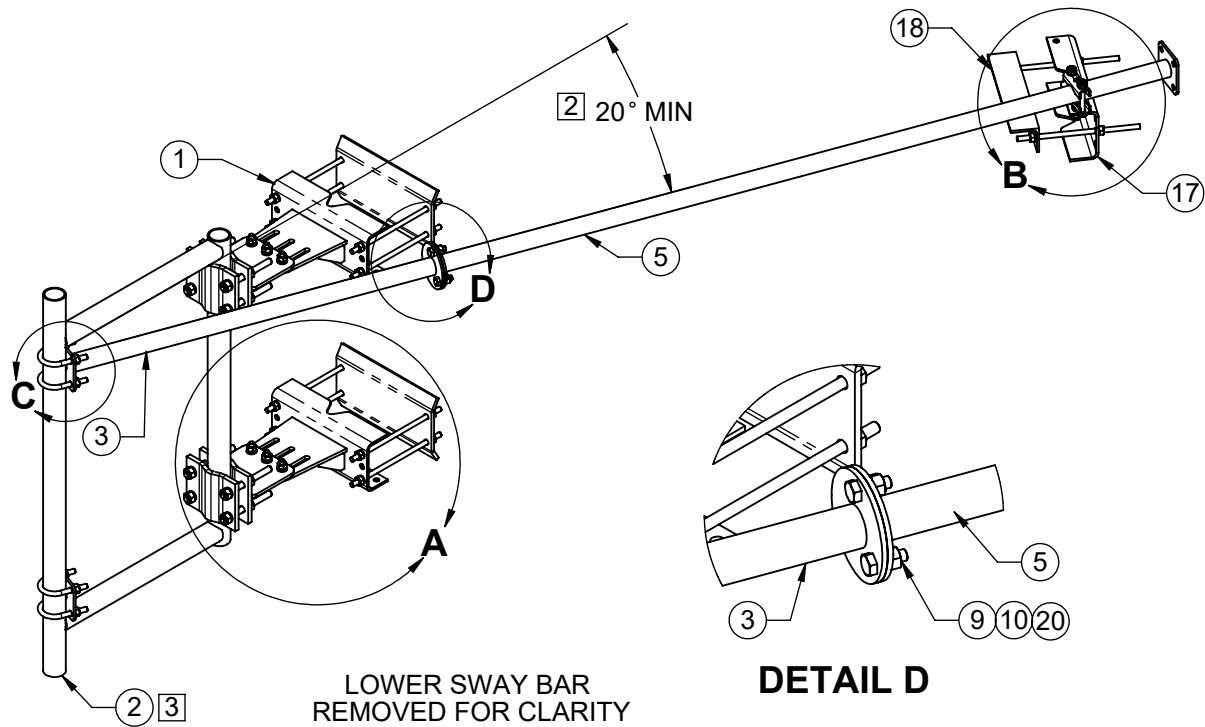


NOTES:

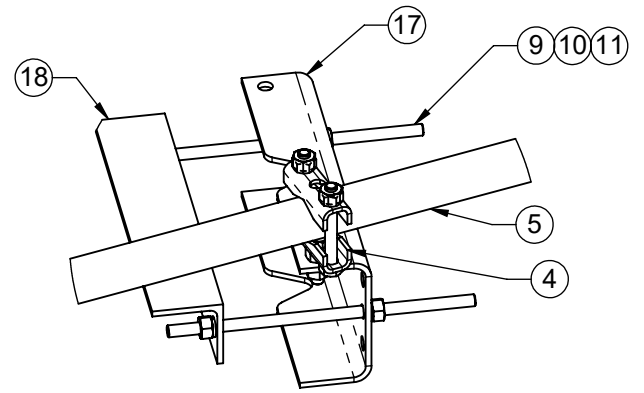
- 1. WIND RATING: 90mph WITH 2 - 3.67 SQ. FT ANTENNAS INSTALLED.**
- 2. TO ACHIEVE THE POSTED WIND RATING, THE ANGLE BETWEEN THE SWAY BAR AND SIDE ARM WELDMENT MUST BE 20° OR GREATER.**
- 3. SEE TABLE FOR ASSEMBLY NO. AND ITEM 2 PART NO.**
- 4. ITEM 9, FLAT WASHERS, TO BE INSTALLED AGAINST SLOTS ON ITEMS 1 AND 6.**

ASSEMBLY NO.	PART NO ITEM 5	DESCRIPTION
2113-2	7000-2113-2	WELDMENT, SIDE ARM, 2FT
2113-3	7000-2113-3	WELDMENT, SIDE ARM, 3 FT
2113-4	7000-2113-4	WELDMENT, SIDE ARM, 4 FT
2113-5	7000-2113-5	WELDMENT, SIDE ARM, 5 FT
2113-6	7000-2113-6	WELDMENT, SIDE ARM, 6 FT

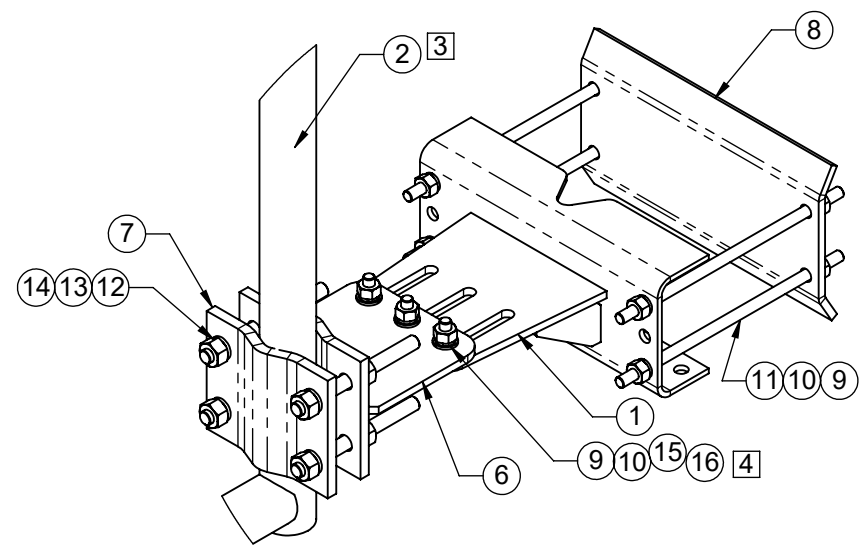
THE INFORMATION CONTAINED IN THIS DRAWING IS THE SOLE PROPERTY OF ALT. ANY REPRODUCTION IN PART OR WHOLE WITHOUT THE WRITTEN PERMISSION OF ALT IS PROHIBITED. 4/16/2018	CAD GENERATED DRAWING, DO NOT MANUALLY UPDATE		 800-950-7960 FAX 940-455-2817 www.altfabrication.com sales@altfabrication.com	122 Leesley Lane Argyle, Texas 76226	
	APPROVALS	DATE			TITLE:
	DRAWN SF	11/19/08	SIDE ARM ASSEMBLY, DOUBLE SWAY BAR		
	CHECKED TU	02/12/09	DWG. NO.	2113-X	
	ENGINEER		REV.	F	
FINISH: HDG	WEIGHT: 274.2	ISSUED	SCALE: NTS	DO NOT SCALE DRAWING	SHEET: 1 OF 3



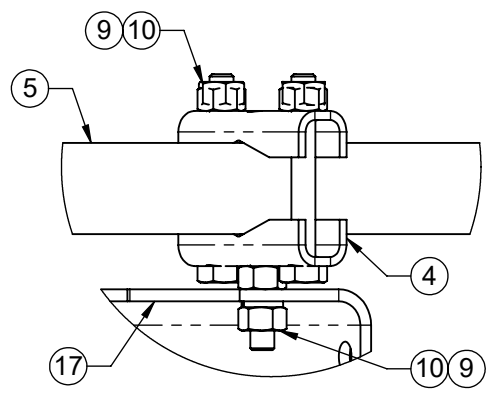
DETAIL D



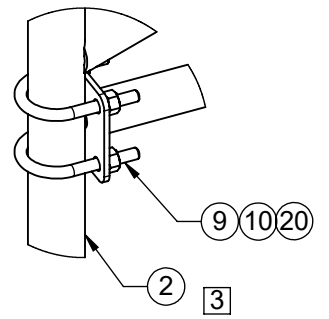
DETAIL B



DETAIL A



DETAIL VIEW OF ITEM 4



DETAIL C

THE INFORMATION CONTAINED
IN THIS DRAWING IS THE SOLE
PROPERTY OF ALT. ANY
REPRODUCTION IN PART OR
WHOLE WITHOUT THE WRITTEN
PERMISSION OF ALT IS
PROHIBITED.

4/16/2018



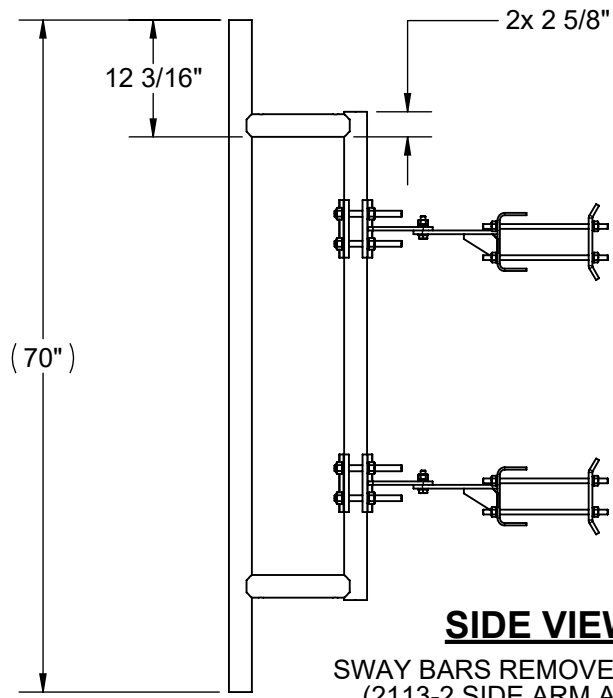
800-950-7960
FAX 940-455-2817
www.altfabrication.com
sales@altfabrication.com

122 Leesley Lane
Argyle, Texas
76226

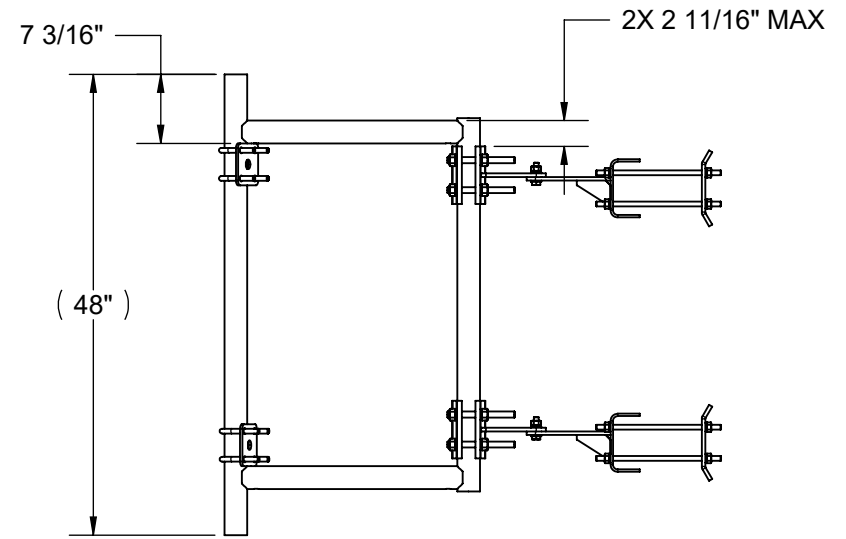
TITLE:
**SIDE ARM ASSEMBLY,
DOUBLE SWAY BAR**

DWG. NO.
2113-X

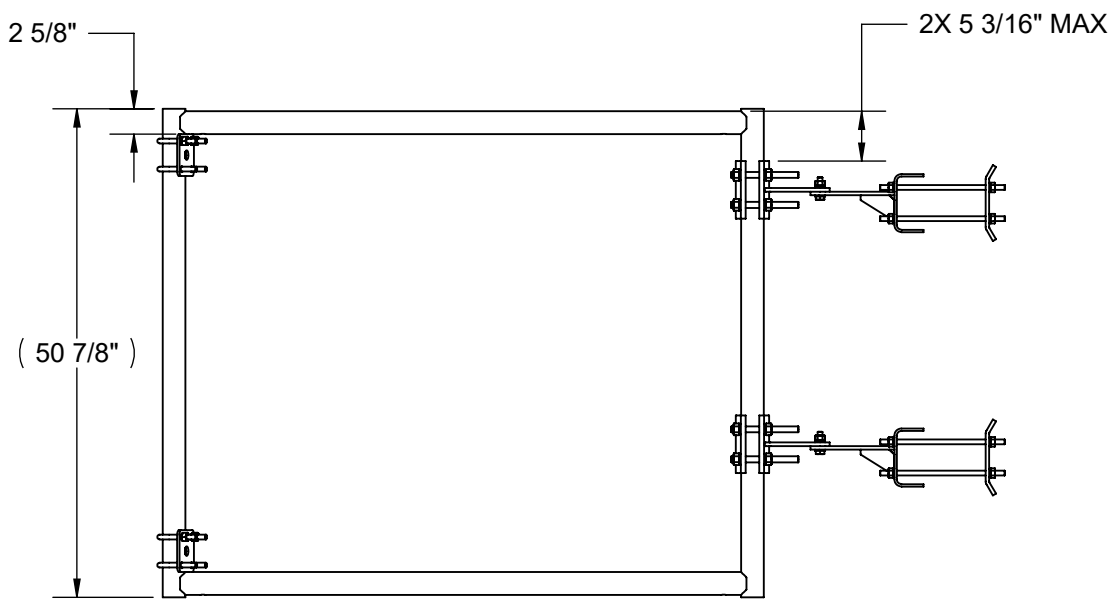
REV.
F



SIDE VIEW
 SWAY BARS REMOVED FOR CLARITY
 (2113-2 SIDE ARM ASSEMBLY)



SIDE VIEW
 SWAY BARS REMOVED FOR CLARITY
 (2113-3,-4, AND -5 SIDE ARM ASSEMBLY)



SIDE VIEW
 SWAY BARS REMOVED FOR CLARITY
 (2113-6 SIDE ARM ASSEMBLY)

THE INFORMATION CONTAINED IN THIS DRAWING IS THE SOLE PROPERTY OF ALT. ANY REPRODUCTION IN PART OR WHOLE WITHOUT THE WRITTEN PERMISSION OF ALT IS PROHIBITED. 4/16/2018	800-950-7960 FAX 940-455-2817 www.altfabrication.com sales@altfabrication.com	122 Leesley Lane Argyle, Texas 76226
	TITLE: SIDE ARM ASSEMBLY, DOUBLE SWAY BAR	
FINISH: HDG	WEIGHT: 274.2	SCALE: NTS DO NOT SCALE DRAWING
DWG. NO. 2113-X		REV. F
SHEET: 3 OF 3		