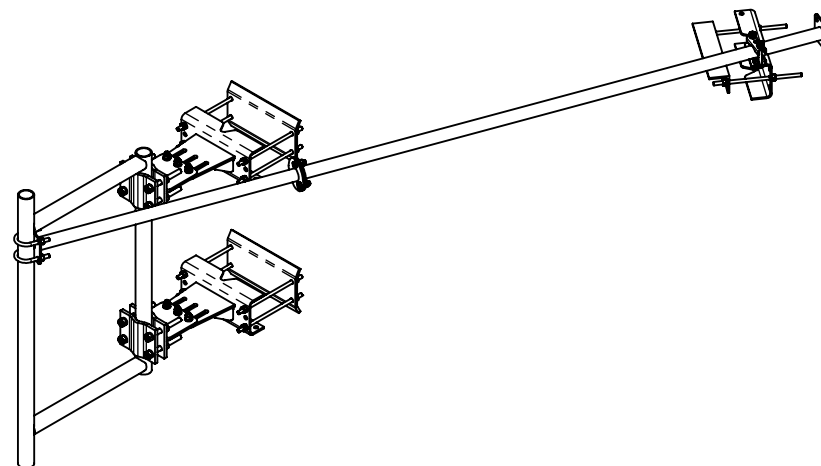



ITEM NO.	QTY	PART NO.	DESCRIPTION
1	2	7000-2120-TB	WELDMENT, TOWER LEG BRACKET, UNIVERSAL
2	1	3	WELDMENT, SIDE ARM
3	1	7000-2120-KD.42	42" SWAY BAR SECTION, 1.90" OD PIPE
4	1	7000-2120-KD.2	SWAY BAR CLAMP ASSEMBLY
5	1	7000-2120-KD.84	84" SWAY BAR SECTION, 1.90" OD PIPE
6	2	7000-2111-U.1	WELDMENT, TAPER BRACKET, OUTSIDE
7	2	7000-2116HD-1.1	CLAMP, ROUND PIPE
8	2	7000-2120-AA.2	BACKPLATE, ANGLE LEG ADAPTER,
9	36	4754G	WASHER, 1/2" RGLR LOCK, GALV
10	36	4650G-BULK	NUT, 1/2" HEX, A563 GALV
11	10	4375G-13	1/2" X 13" ALL THREAD
12	16	4660G-BULK	5/8" GALV HEX NUT
13	16	4764G-BULK	5/8" GALV LOCK WASHER
14	8	4325G-7	5/8" X 7" ALL THREAD
15	6	4455G	BOLT, 1/2" -13UNC X 2" LG HEX, A325 GALV
16	12	4750G-BULK 4	WASHER, 1/2" NARROW, GALV
17	1	7000-2120-TB.1	TAPER BRACKET LEG ADAPTOR
18	1	7000-2120-KD.3	CLAMP ANGLE 1/4" X 3" X 14"
19	3	4454G-BULK	1/2" X 1-1/2" A325 GLAV. HEX BOLT
20	2	4499-4G	U-BOLT, 2"(2.38" OD PIPE), GALV

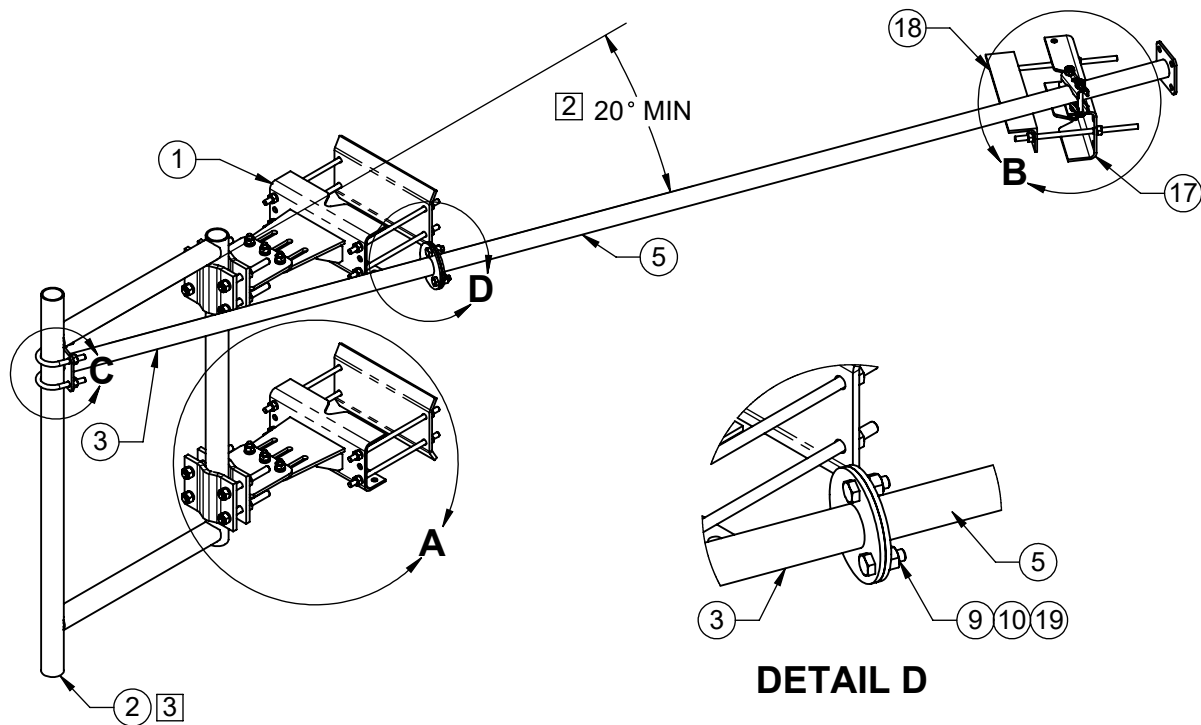


NOTES:

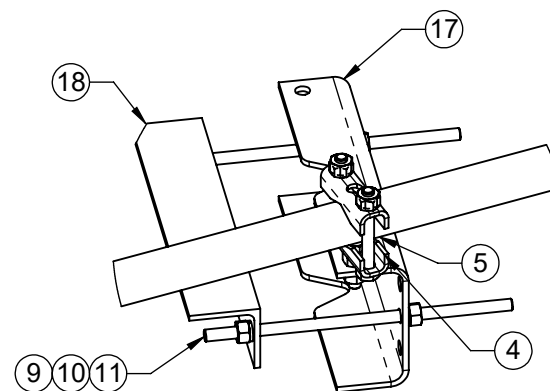
1. **WIND RATING: 90mph WITH 1 - 3.67 SQ. FT ANTENNA INSTALLED.**
2. **TO ACHIEVE THE POSTED WIND RATING, THE ANGLE BETWEEN THE SWAY BAR AND SIDE ARM WELDMENT MUST BE 20° OR GREATER.**
3. **SEE TABLE FOR ASSEMBLY NO. AND ITEM 2 PART NO.**
4. **ITEM 9, FLAT WASHERS, TO BE INSTALLED AGAINST SLOTS ON ITEMS 1 AND 6.**

ASSEMBLY NO.	PART NO ITEM 5	DESCRIPTION
2113-2-1SB	7000-2113-2	WELDMENT, SIDE ARM, 2 FT
2113-3-1SB	7000-2113-3	WELDMENT, SIDE ARM, 3 FT
2113-4-1SB	7000-2113-4	WELDMENT, SIDE ARM, 4 FT
2113-5-1SB	7000-2113-5	WELDMENT, SIDE ARM, 5 FT
2113-6-1SB	7000-2113-6	WELDMENT, SIDE ARM, 6 FT

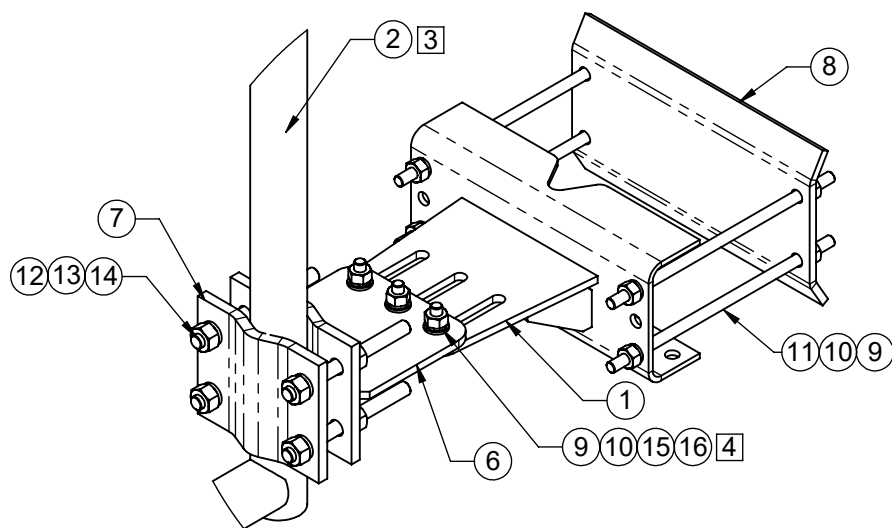
THE INFORMATION CONTAINED IN THIS DRAWING IS THE SOLE PROPERTY OF ALT. ANY REPRODUCTION IN PART OR WHOLE WITHOUT THE WRITTEN PERMISSION OF ALT IS PROHIBITED. 4/13/2018	CAD GENERATED DRAWING, DO NOT MANUALLY UPDATE			800-950-7960 FAX 940-455-2817 www.altfabrication.com sales@altfabrication.com		122 Leesley Lane Argyle, Texas 76226	
	APPROVALS			DATE		TITLE:	
	DRAWN	SF		10/09/08		SIDE ARM ASSEMBLY, SINGLE SWAY BAR	
	CHECKED	TU		11/21/08			
	ENGINEER	JMD		11/24/08			
	ISSUED			JMD	11/24/08	DWG. NO. 2113-X-1SB	
FINISH: HDG	WEIGHT: 214.5		SCALE: NTS		DO NOT SCALE DRAWING	SHEET: 1 OF 3	



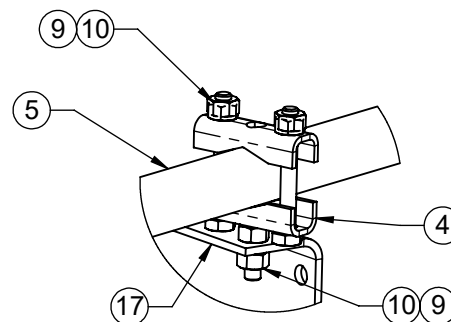
DETAIL D



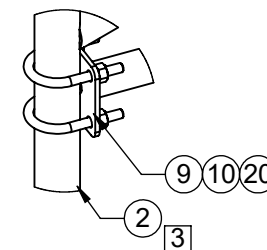
DETAIL B



DETAIL A



DETAIL VIEW OF ITEM 4



DETAIL C

THE INFORMATION CONTAINED
IN THIS DRAWING IS THE SOLE
PROPERTY OF ALT. ANY
REPRODUCTION IN PART OR
WHOLE WITHOUT THE WRITTEN
PERMISSION OF ALT IS
PROHIBITED.

4/13/2018



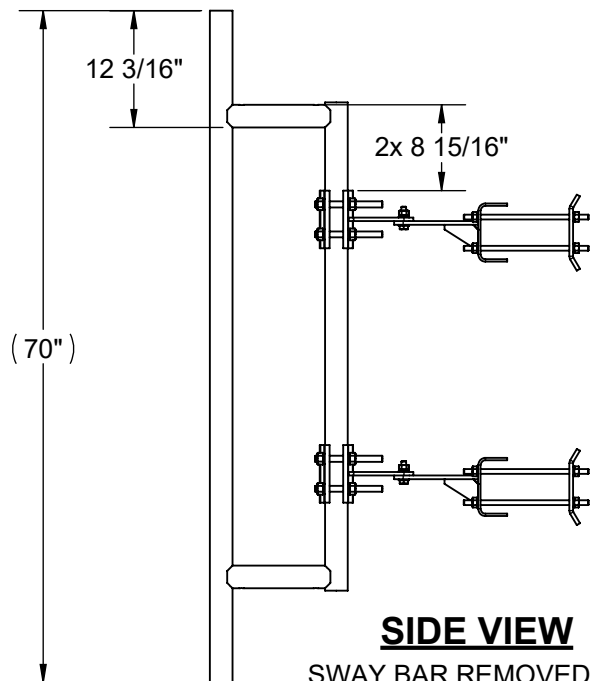
800-950-7960
FAX 940-455-2817
www.altfabrication.com
sales@altfabrication.com

122 Leesley Lane
Argyle, Texas
76226

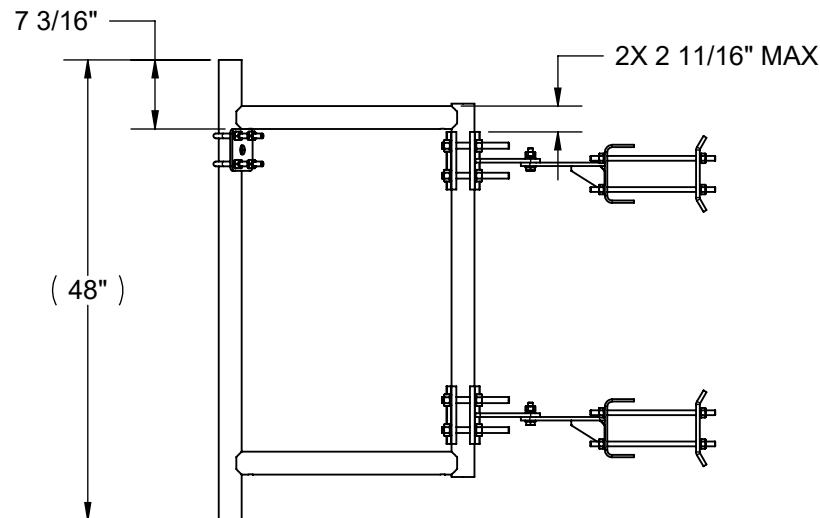
TITLE:
**SIDE ARM ASSEMBLY,
SINGLE SWAY BAR**

DWG. NO.
2113-X-1SB

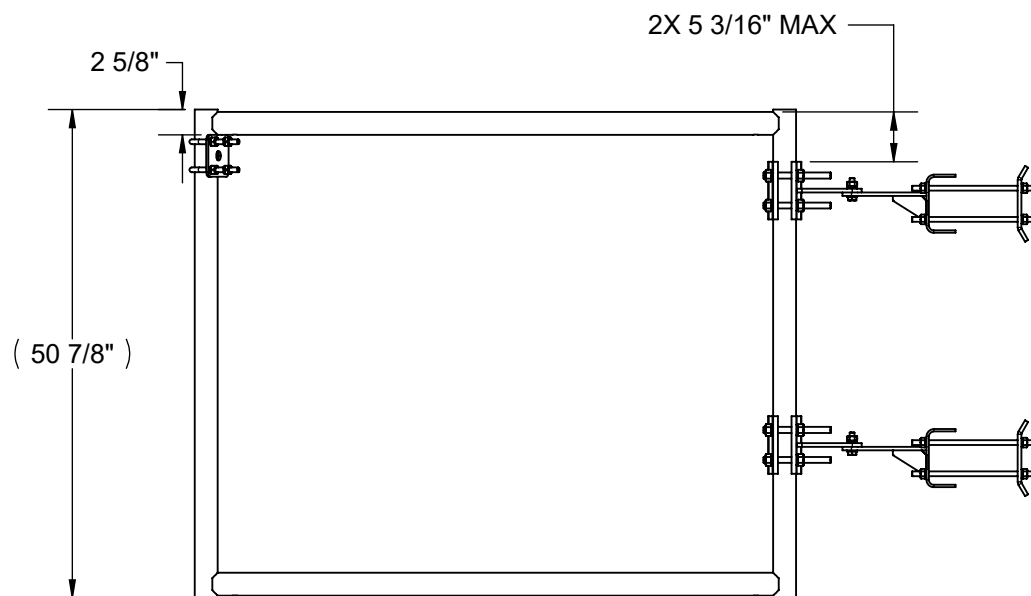
REV.
F



SIDE VIEW
SWAY BAR REMOVED FOR CLARITY
(2113LD-2 SIDE ARM ASSEMBLY)



SIDE VIEW
SWAY BAR REMOVED FOR CLARITY
(2113LD-3,-4, AND -5 SIDE ARM ASSEMBLY)



SIDE VIEW
SWAY BAR REMOVED FOR CLARITY
(2113LD-6 SIDE ARM ASSEMBLY)

THE INFORMATION CONTAINED
IN THIS DRAWING IS THE SOLE
PROPERTY OF ALT. ANY
REPRODUCTION IN PART OR
WHOLE WITHOUT THE WRITTEN
PERMISSION OF ALT IS
PROHIBITED.

4/13/2018



800-950-7960
FAX 940-455-2817
www.altfabrication.com
sales@altfabrication.com

122 Leesley Lane
Argyle, Texas
76226

TITLE:
**SIDE ARM ASSEMBLY,
SINGLE SWAY BAR**

DWG. NO.
2113-X-1SB

REV.
F