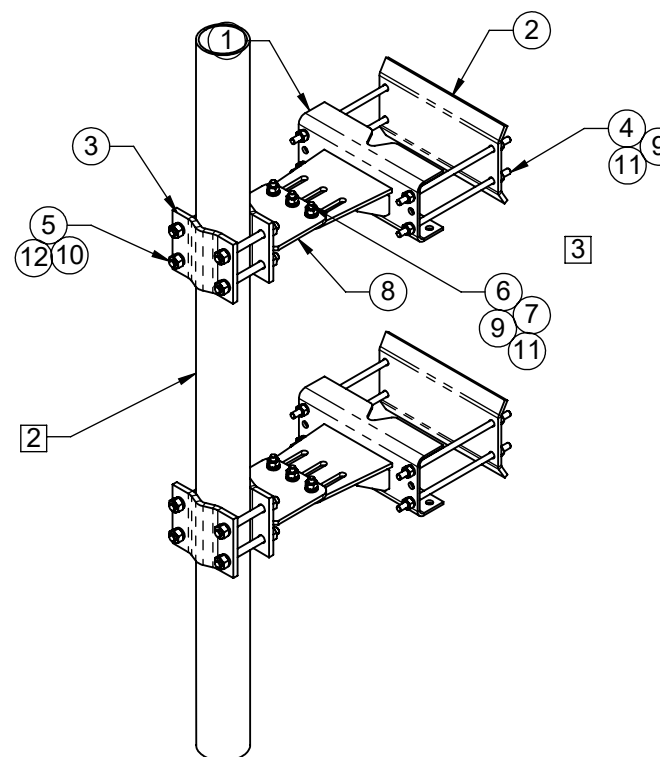


TOWER LEG ANGLE	MAX D (IN)
1:20	96

## TAPER BRACKET SPACING




1. WIND RATING: 90 MPH WITH (1) 8FT MICROWAVE DISH AND 4.5"OD MOUNT PIPE (EIA/TIA - 222 - G).

2. ANTENNA MOUNT PIPE , TO BE ORDERED SEPARATLY.  
MOUNT CAN ACCOMODATE 2" (2.375" OD) TO 4" (4.5" OD) PIPE.

3. TO ACHIEVE POSTED WIND RATING, FULLY TIGHTEN ALL (6) ITEM 6 BOLTS BY TURNING NUTS 1/3 TURN PAST "SNUG TIGHT" CONDITION AS DEFINED BY AISC 13th EDITION, SECTION 8.2 AFTER FINAL POSITIONING.
4. MAX TOWER LEG SIZES:  
ROUND LEGS 1-1/2" TO 8"OD.  
90° ANGLE LEG - 8" X 8".  
60° ANGLE LEG - 1' TIP TO TIP.

ITEM NO.	QTY	PART NO.	DESCRIPTION
1	2	7000-2120-TB	WELDMENT, TOWER LEG BRACKET, UNIVERSAL
2	2	7000-2120-AA.2	BACKPLATE, ANGLE LEG ADAPTER,
3	2	7000-2116HD-1.1	CLAMP, ROUND PIPE
4	8	4375G-13	1/2" X 13" ALL THREAD
5	8	4325G-7	5/8" X 7" ALL THREAD
6	6	4455G	1/2" X 2" LONG GALV BOLT
7	12	4750G-BULK	WASHER, 1/2" NARROW, GALV
8	2	7000-2111-U.1	WELDMENT, TAPER BRACKET, OUTSIDE
9	22	4650G-BULK	NUT, 1/2" HEX, A563 GALV
10	16	4660G-BULK	5/8" GALV HEX NUT
11	22	4754G-BULK	WASHER, 1/2" RGLR LOCK, GALV
12	16	4764G-BULK	5/8" GALV LOCK WASHER

<p>THE INFORMATION CONTAINED IN THIS DRAWING IS THE SOLE PROPERTY OF ALT. ANY REPRODUCTION IN PART OR WHOLE WITHOUT THE WRITTEN PERMISSION OF ALT IS PROHIBITED.</p> <p>9/8/2017</p>		CAD GENERATED DRAWING, DO NOT MANUALLY UPDATE		 <p>800-950-7960 FAX 940-455-2817 www.altfabrication.com sales@altfabrication.com</p>	<p>122 Leesley Lane Argyle, Texas 76226</p>		
		APPROVALS	DATE			TITLE:  <b>DROP PIPE ASM</b>	
		DRAWN	SRH 04/15/08				
		CHECKED	JMD 06/18/08				
		ENGINEER	JMD 06/18/08				DWG. NO. <b>2111-U</b>
FINISH:	WEIGHT: 110.9	ISSUED	DMR 06/18/08	SCALE: NTS	DO NOT SCALE DRAWING	SHEET: 1 OF 1	REV. <b>E</b>