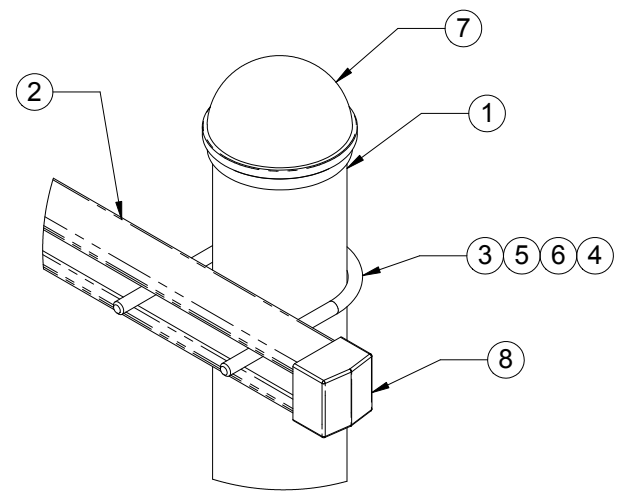
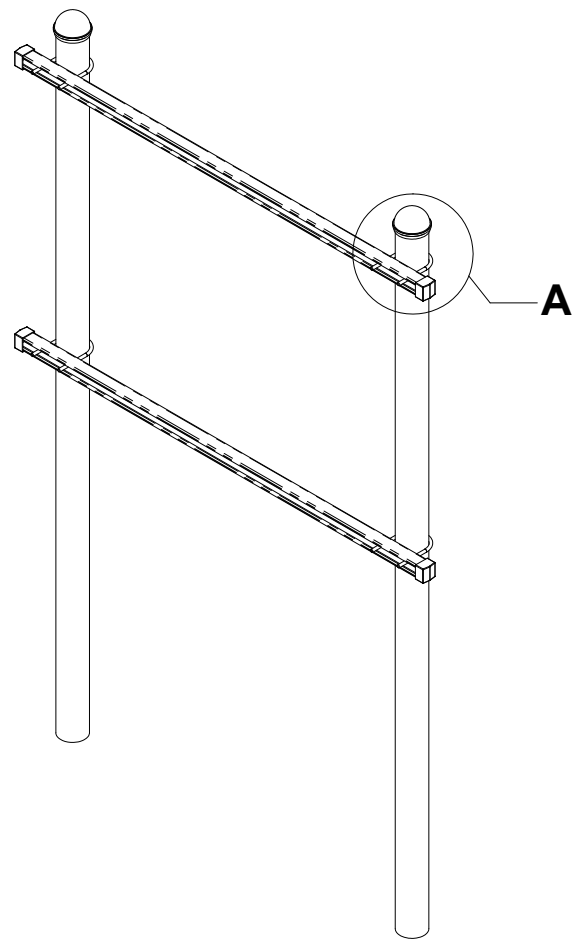


8 7 6 5 4 3 2 1

D
C
B
A



DETAIL A

| ITEM NO. | QTY. | PART NO. | DESCRIPTION |
|----------|------|---|--|
| 1 | 2 | 2127-90 | PIPE, 3" (3-1/2" OD) SCHED 40 X 90" LG |
| 2 | 2 | 7000-2109-3 | GALV. STEEL CHANNEL STRUT, SLOTTED X 5 'LG |
| 3 | 4 | 4477-2G | U-BOLT, 3" (3.5" OD) PIPE, GALV (3/8" DIA) |
| 4 | 8 | 4621G | NUT, 3/8" HEX, GALV |
| 5 | 8 | 4720G | WASHER, 3/8" NARROW, GALV |
| 6 | 8 | 4724G | WASHER, 3/8" RGLR LOCK, GALV |
| 7 | 2 | 5202-3 | GALV. POST CAP, 3-1/2" PIPE |
| 8 | 4 | 2170-EC | PLASTIC END CAP, 1-5/8" CHANNEL STRUT |
| 9 | 4 | 2196-38 1 | SADDLE NUT, 3/8", ELECTRO-GALVANIZED |

1 3/8" SADDLE NOT SHOWN

PART NO.
2109-6-712

| | | | | | |
|--|--|----------|--|--|---|
| THE INFORMATION CONTAINED IN THIS DRAWING IS THE SOLE PROPERTY OF ALT. ANY REPRODUCTION IN PART OR WHOLE WITHOUT THE WRITTEN PERMISSION OF ALT IS PROHIBITED. 2/17/2006 | CAD GENERATED DRAWING, DO NOT MANUALLY UPDATE | | 800-950-7933 FAX 940-455-2817 www.altfabrication.com sales@altfabrication.com | 122 Leesley Lane Argyle, Texas 76226 | |
| | APPROVALS | DATE | | EQUIPMENT RACK TWO POLE | |
| | DRAWN | CDM | 02/16/06 | | |
| | CHECKED | JMD | 02/17/06 | 2109-6-712 | A |
| ENGINEER | JMD | 02/17/06 | SCALE: NTS DO NOT SCALE DRAWING SHEET 1 OF 1 | | |
| ISSUED | DMR | 02/17/06 | | | |