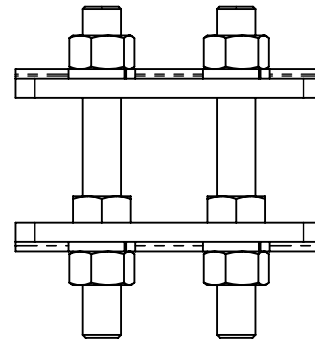
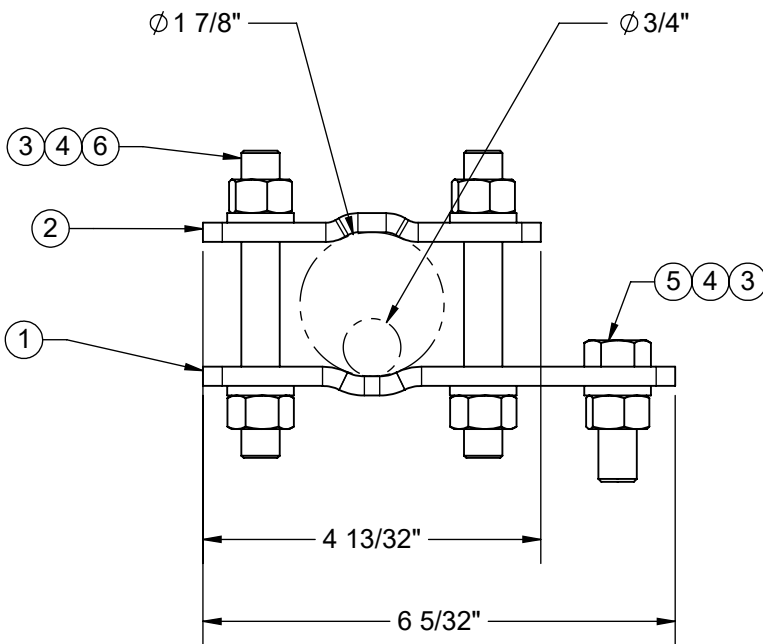
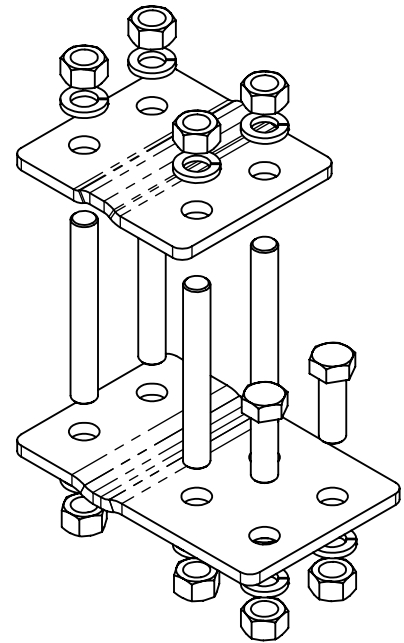



REVISIONS			
REV.	DESCRIPTION	DATE	APPROVED
B	CHANGED PART 1, 2 AND 6	10/04/17	BTM



ITEM NO.	QTY.	PART NO.	DESCRIPTION
1	1	7000-951	1/4" X 4" BRASS WATER PIPE CLAMP
2	1	7000-951.1	1/4" X 4" BRASS WATER PIPE CLAMP
3	10	4754-BULK	1/2" LOCKWASHER, SS
4	10	4650-BULK	1/2" NUT, SS
5	2	4454-BULK	BOLT, 1/2" X 1-1/2" LG HEX, SST TAP
6	4	4315-4	ALL THREAD, 1/2" X 4" LG, SST

**NOTES:**  
1. ASSEMBLE AS SHOWN

FINISH NONE		MATERIAL PROD# SEE B.O.M.	
DO NOT SCALE DRAWING		APPROVALS	DATE
UNLESS OTHERWISE SPECIFIED DIMENSIONS ARE IN INCHES. TOLERANCES ARE: FRACTIONS DECIMALS ANGLES ± 1/32 .XX ± .XX ± 1° .XXX ± .XXX		DRAWN	SF 12/14/09
		CHECKED	TU 01/05/10
		ENGR.	
		ISSUED	
THE INFORMATION CONTAINED IN THIS DRAWING IS THE SOLE PROPERTY OF ALT. ANY REPRODUCTION IN PART OR WHOLE WITHOUT THE WRITTEN PERMISSION OF ALT IS PROHIBITED.		MANUFACT.	

		800-950-7960 FAX 940-455-2817 www.altfabrication.com sales@altfabrication.com		122 Leesley Lane Argyle, Texas 76226	
TITLE:					
WATER PIPE CLAMP FITS 3/4" TO 1-7/8" OD					
SIZE A		DWG. NO. 951			REV. B
SCALE: NTS		WEIGHT 4.73		SHEET 1 OF 1	