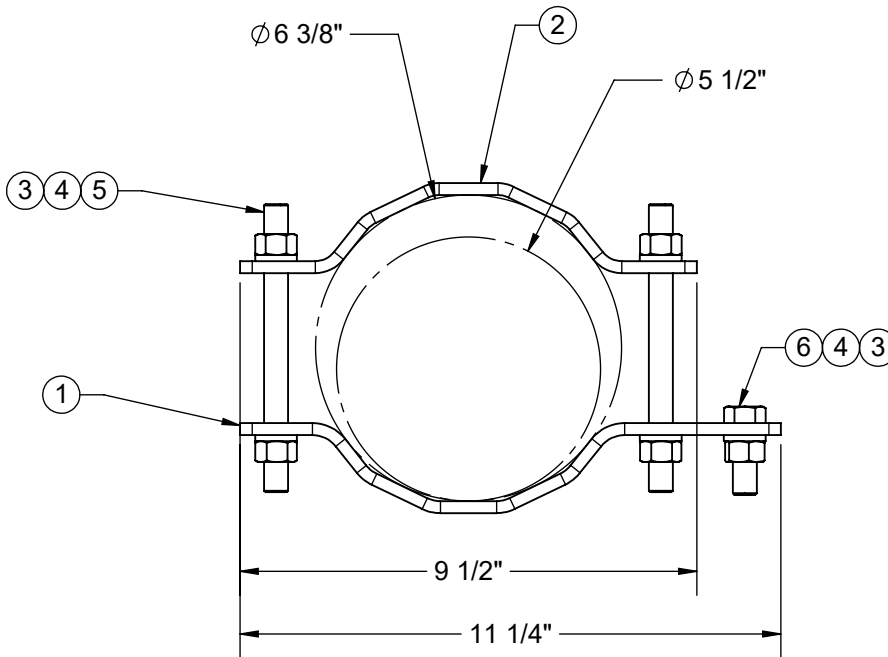
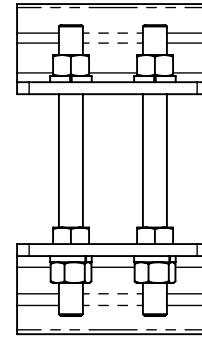
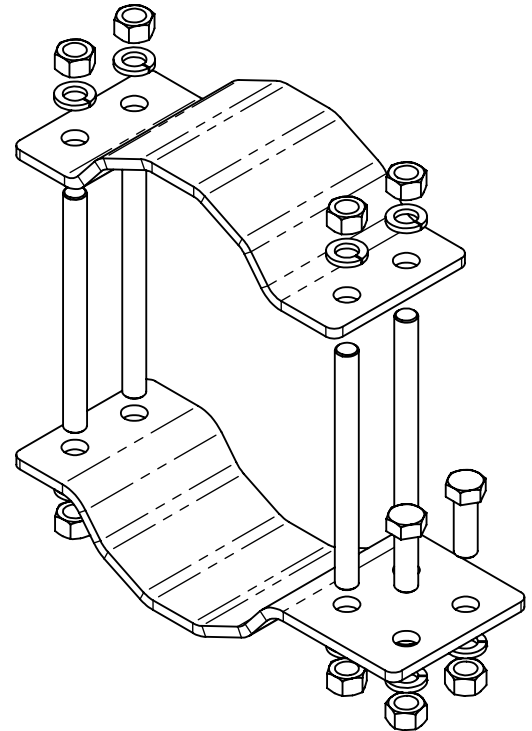


REVISIONS			
REV.	DESCRIPTION	DATE	APPROVED
B	CHANGED PART 1, 2 AND 5	10/04/17	BTM



ITEM NO.	QTY.	PART NO.	DESCRIPTION
1	1	7000-951-6	1/4" X 4" BRASS WATER PIPE CLAMP
2	1	7000-951-6.1	1/4" X 4" BRASS WATER PIPE CLAMP
3	10	4754-BULK	1/2" LOCKWASHER, SS
4	10	4650-BULK	1/2" NUT, SS
5	4	4315-6	ALL THREAD, 1/2" X 6" LG, SST
6	2	4454-BULK	BOLT, 1/2" X 1-1/2" LG HEX, SST TAP

**NOTES:**  
1. ASSEMBLE AS SHOWN

FINISH	NONE	MATERIAL PROD# SEE B.O.M.
--------	------	---------------------------



800-950-7960  
FAX 940-455-2817  
www.altfabrication.com  
sales@altfabrication.com

122 Leesley Lane  
Argyle, Texas  
76226

<b>DO NOT SCALE DRAWING</b> UNLESS OTHERWISE SPECIFIED DIMENSIONS ARE IN INCHES. TOLERANCES ARE: FRACTIONS DECIMALS ANGLES $\pm 1/32$ .XX $\pm .XX$ $\pm 1^\circ$ .XXX $\pm .XXX$	APPROVALS		DATE
	DRAWN	SF	12/14/09
	CHECKED	TU	01/05/10
	ENGR.		
THE INFORMATION CONTAINED IN THIS DRAWING IS THE SOLE PROPERTY OF ALT. ANY REPRODUCTION IN PART OR WHOLE WITHOUT THE WRITTEN PERMISSION OF ALT IS PROHIBITED.	ISSUED		
	MANUFACT.		

TITLE:			
WATER PIPE CLAMP FITS 5-1/2" to 6-3/8" OD			
SIZE	DWG. NO.		REV.
A	951-6		B
SCALE: NTS	WEIGHT 8.97	SHEET 1 OF 1	