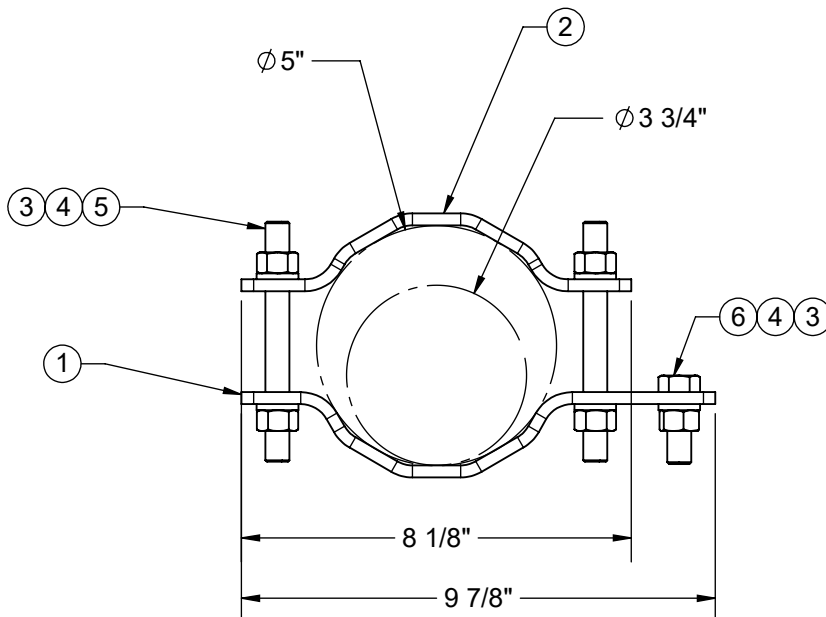
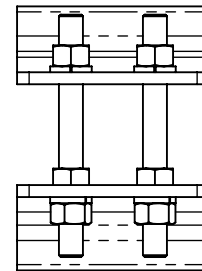
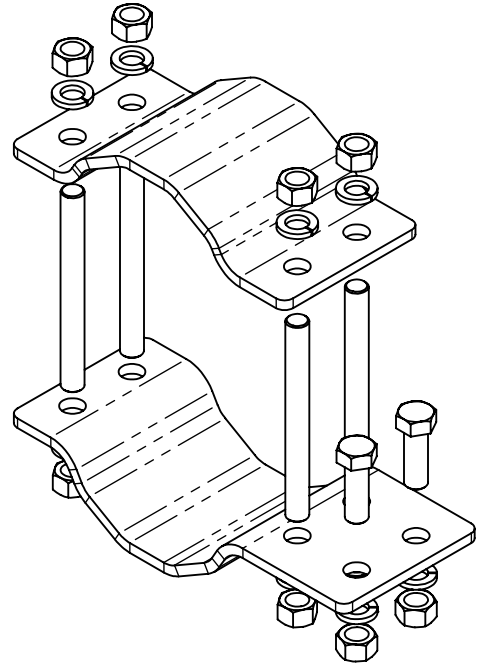


REVISIONS			
REV.	DESCRIPTION	DATE	APPROVED
B	CHANGED PART 1, 2 AND 5	10/04/17	BTM



ITEM NO.	QTY.	PART NO.	DESCRIPTION
1	1	7000-951-5	1/4" X 4" BRASS WATER PIPE CLAMP
2	1	7000-951-5.1	1/4" X 4" BRASS WATER PIPE CLAMP
3	10	4754-BULK	1/2" LOCKWASHER, SS
4	10	4650-BULK	1/2" NUT, SS
5	4	4315-5	ALL THREAD, 1/2" X 5" LG, SST
6	2	4454-BULK	BOLT, 1/2" X 1-1/2" LG HEX, SST TAP

NOTES:
1. ASSEMBLE AS SHOWN

FINISH	NONE	MATERIAL PROD# SEE B.O.M.
--------	------	---------------------------



800-950-7960
FAX 940-455-2817
www.altfabrication.com
sales@altfabrication.com

122 Leesley Lane
Argyle, Texas
76226

DO NOT SCALE DRAWING UNLESS OTHERWISE SPECIFIED DIMENSIONS ARE IN INCHES. TOLERANCES ARE: FRACTIONS DECIMALS ANGLES $\pm 1/32$.XX $\pm .XX$ $\pm 1^\circ$.XXX $\pm .XXX$ 10/4/2017	APPROVALS		DATE
	DRAWN	SF	12/14/09
	CHECKED	TU	01/05/10
	ENGR.		
	ISSUED		
THE INFORMATION CONTAINED IN THIS DRAWING IS THE SOLE PROPERTY OF ALT. ANY REPRODUCTION IN PART OR WHOLE WITHOUT THE WRITTEN PERMISSION OF ALT IS PROHIBITED.	MANUFACT.		

TITLE:			
WATER PIPE CLAMP FITS 3-3/4" TO 5" OD			
SIZE	DWG. NO.		REV.
A	951-5		B
SCALE: NTS	WEIGHT 7.85	SHEET 1 OF 1	