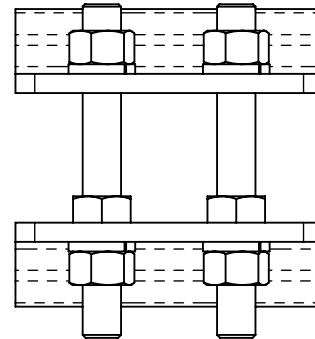
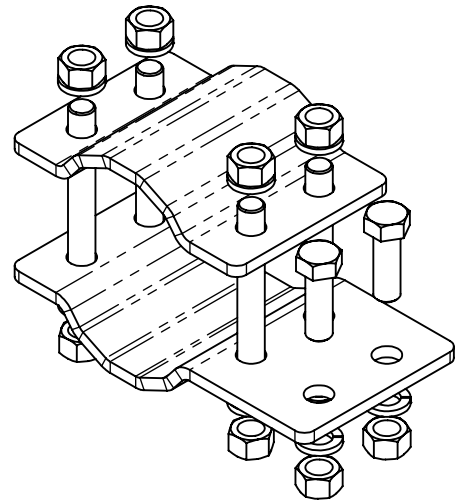
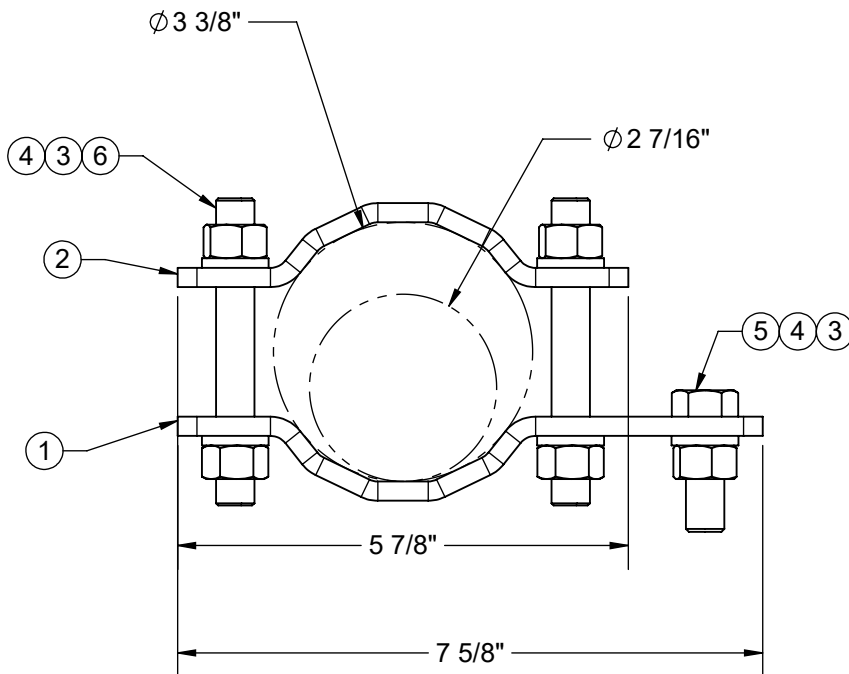


REVISIONS			
REV.	DESCRIPTION	DATE	APPROVED
B	CHANGED PART 1, 2 AND 6	10/04/17	BTM



ITEM NO.	QTY.	PART NO.	DESCRIPTION
1	1	7000-951-3	1/4" X 4" BRASS WATER PIPE CLAMP
2	1	7000-951-3.1	1/4" X 4" BRASS WATER PIPE CLAMP
3	10	4754-BULK	1/2" LOCKWASHER, SS
4	10	4650-BULK	1/2" NUT, SS
5	2	4454-BULK	BOLT, 1/2" X 1-1/2" LG HEX, SST TAP
6	4	4315-4	ALL THREAD, 1/2" X 4" LG, SST

**NOTES:**  
1. ASSEMBLE AS SHOWN

<b>FINISH</b> NONE	<b>MATERIAL PROD#</b> SEE B.O.M.
--------------------	----------------------------------



800-950-7960  
FAX 940-455-2817  
www.altfabrication.com  
sales@altfabrication.com

122 Leesley Lane  
Argyle, Texas  
76226

<b>DO NOT SCALE DRAWING</b> UNLESS OTHERWISE SPECIFIED DIMENSIONS ARE IN INCHES. TOLERANCES ARE: FRACTIONS DECIMALS ANGLES $\pm 1/32$ .XX $\pm .XX$ $\pm 1^\circ$ .XXX $\pm .XXX$	APPROVALS		DATE
	DRAWN	SF	12/14/09
	CHECKED	TU	01/05/10
	ENGR.		
THE INFORMATION CONTAINED IN THIS DRAWING IS THE SOLE PROPERTY OF ALT. ANY REPRODUCTION IN PART OR WHOLE WITHOUT THE WRITTEN PERMISSION OF ALT IS PROHIBITED.	ISSUED		
	MANUFACT.		

10/6/2017

<b>TITLE:</b>			
WATER PIPE CLAMP FITS 2-7/16" TO 3-3/8" OD			
SIZE A	DWG. NO. 951-3		REV. B
SCALE: NTS	WEIGHT 5.95	SHEET 1 OF 1	